

LABOR OF LOVE



© 2009 Julia Cairns

48" x 58"



20774-B 5/8 yard



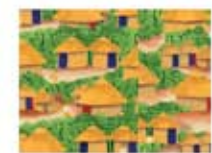
20775-GO 1 1/2 yds



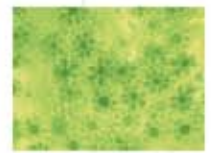
20776-B 1/2 yd



20777-B 3/4 yd



20777-O 3/4 yd



20780-G 3/8 yd



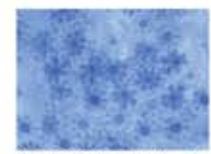
20778-S 5/8 yd



20778-T 1 yd



20779-BO 1/4 yd



20780-B 1 1/2 yd



207841-G 3/8 yd

*3 1/2 yds for backing, model used 20776-B

inc binding

Labor of Love

48" x 58"

Designed by Diane Nagle

Skill Level: Advanced

Materials needed:

Tri Recs™ Tools or use templates provided.

Paper backed Fusible web.

#20774 B	Blue scene print	5/8 yd
#20775 GO	Large border scenes	1 1/2 yd
#20776 B	Motif print	1/2 yd
#20777 B	Blue houses	3/4 yd
#20777 O	Orange houses	3/8 yd
#20778 S	Gold baskets	5/8 yd
#20778 T	Rust baskets	1 yd
#20779 BO	Clothes print	1/4 yd
#20780 B	Blue tone	1 1/2 yd. includes binding
#20780 G	Green tone	3/8 yd
#20841 G	Green leaves	3/8 yd
Backing		3 1/4 yds

Cutting:

#20774 B Blue scene print: Cut 1 strip 8 3/4" x wof. Fussy cut (3) 8 1/2" x 8 3/4" rectangles. Fussy cut (2) 6 1/4" squares.

#20775 GO Large border scenes: Fussy cut 1 lengthwise strip 12 1/2" x 48 1/2".

#20776 B Motif print: Iron fusible web to wrong side of 3 motifs of your choice from fabric for applique in row 7. Cut out chosen motifs on white outline with scissors.

#20777 B Blue houses: Cut 2 strips 5 1/2" x wof.

#20777 O Orange houses: Cut 1 strip 1 3/4" x wof. Sub cut (4) 1 3/4" x 6 1/4" rectangles. Now cut 1 strip 8 3/4" x wof. Sub cut (4) 1 3/4" x 8 3/4" rectangles.

20778 S Gold baskets: Cut 3 strips 3 1/2" x wof. Sub cut (20) 3 1/2" tri units or Templates A. Cut (20) 3 1/2" squares. Cut 2 strips 1" x wof. Sub cut (6) 1" x 9 1/2" rectangles. Cut 3 strips 1 3/4" x wof for row 7. Sub cut (6) 1 3/4" x 6" rectangles. Sub cut (6) 1 3/4" x 8 1/2" rectangles.

20778 T Rust baskets: Cut 1 strip 3 1/2" x wof. Sub cut (5) 3 1/2" squares. Cut 1 strip 4 1/4" x wof. Sub cut (8) 4 1/4" squares, cut twice on the diagonal making quarter square triangle units for pinwheel blocks. Cut 4 strips 1 1/4" x wof. Sub cut (32) 1 1/4" x 4" rectangles for pinwheel blocks. Cut 2 strips 3 5/8" x wof. Sub cut (12) 3 5/8" squares, cut once on the diagonal making 24 half square triangles for row 5. Cut 2 strips 2 1/4" x wof.

#20779 BO Clothes print: Cut 1 strip 3 1/4" x wof. Sub cut (12) 3 1/4" squares for row 5.

#20780 B Blue tone: Cut 2 strips 3 1/2" x wof. Sub cut (40) recs unit or use Template B. Cut 2 strips 3 1/8" x wof. Sub cut (16) 3 1/8" squares. Cut once on the diagonal to make half square triangles for pinwheel blocks. Cut 2 strips 3 5/8" x wof. Sub cut (12) 3 5/8" squares, cut once on the diagonal making 24 half square triangles for row 5. Cut 1 strip 8 1/2" x wof. Sub cut (3) 8 1/2" squares for row 7. Cut 6 strips 2 1/4" x wof for binding.

#20780 G Green tone: Cut 1 strip 4 1/4" x wof. Sub cut (8) 4 1/4" squares, cut twice on the diagonal making quarter square triangle units for the pinwheel blocks. Cut 1 strip 3 1/4" x wof. Sub cut (12) 3 1/4" squares for row 5.

#20841 G Green leaves: Cut 2 strips 1 3/4" x wof. Sub cut (6) 1 3/4" x 8 3/4" rectangles. Cut 1 strip 6" x wof. Sub cut (3) 6" squares.

Assembly:

Follow photo for color placement as you work. If using templates the seam allowance is included.

Row 1: Lay a Blue tone recs triangle right sides together on a gold baskets tri unit and sew along long edges. Use the mirror blue tone recs on the opposite side of the gold tri and sew, making a 3 1/2" star point unit. Make 4. Sew a star point unit, base of star points to the sides of a rust baskets 3 1/2" square. This is the center row of the block. Now sew a gold baskets 3 1/2" square to each side of 2 star point units, checking photo to keep star points in correct position. Sew to the top and bottom of the center row, making a star block. Repeat to make 6 blocks. Sew blocks side by side to complete row 1.

Row 2: Sew blue houses 5 1/2" strips together end to end to make one long strip. Cut 48 1/2". Sew to bottom of row 1.

Row 3: Position blue tone 3 1/8" half square triangles so the right angle is on the upper left. Sew a rust 1 1/4" x 4" rectangle to the right side. Press to rust strip. Lay ruler along the 45 degree angle of this unit and trim off excess rust, making a larger half square triangle unit. Checking placement on photo, sew a green and rust quarter square triangle together, making a larger half square triangle unit. Sew longest side of this unit to the longest (45 degree) side of the blue/rust unit. Make 4. Sew the four units together, referring to photo for placement to make a 6 1/2" pinwheel block. Make 8. Sew all 8 pinwheel blocks side by side into one row. Sew this row to the bottom of row 2.

Row 4: Sew (2) 1 3/4" x 6 1/4" rectangles to the top and bottom of the blue scene (2) 6 1/4" squares. Sew (2) 3/4" x 8 3/4" rectangles to the sides. Set aside. Sew the green leaves 1 3/4" x 8 3/4" rectangles to the sides of the (3) blue scene print 8 1/2" x 8 3/4" rectangles. Following photo, sew the blue scene/green and blue scene/orange blocks together alternately into 1 row. Sew this row to the bottom of row 3.

Row 5: Sew 2 clothes print and 2 green tone 3 1/4" squares into a 4 patch unit. Sew a rust 3 5/8" half square triangle to a blue tone half square triangle, following photo for placement. Two units will be mirrored. Sew 2 units to the opposite sides of a 4 patch unit, and 2 mirrored units to the remaining 2 sides, completing the block. Make 6 blocks. Sew blocks into a row, and sew this row to the bottom of row 4.

Row 6: Sew large border scene strip to the bottom of row 5.

Row 7: Remove paper from fusible web on backs of motifs and fuse with iron to centers of the 3 blue tone 8 1/2" squares. Use buttonhole stitch on sewing machine to sew around edges. Set aside. Sew 2 gold basket 1 3/4" x 6" rectangles to top and bottom of green leaves 6" squares. Sew 2 gold 1 3/4" x 8 1/2" rectangles to sides of block. Make 3. Sew blocks in a row, alternating green/gold blocks with the blue appliqué blocks. Sew this row to the bottom of row 6.

Row 8: Sew 2 1/4" rust basket strips together end to end, and cut 48 1/2". Sew to bottom of row 7.

Layer and quilt as desired. Bind using the 2 1/4" blue tone strips.

Labor of Love
Templates

