

# Petals & Paisley



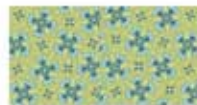
Finished size: 85" x 99"



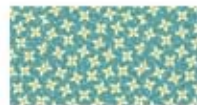
20993 W  $\frac{5}{8}$  yd



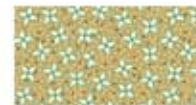
20996 S  $\frac{1}{3}$  yd



20996 H  $\frac{1}{3}$  yd



20999 Q  $8\frac{1}{3}$  yd



20999 A  $\frac{1}{3}$  yd



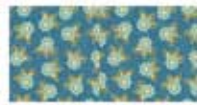
21080 H  $\frac{1}{2}$  yd



20997 A  $\frac{1}{2}$  yd



21080 A  $\frac{1}{2}$  yd



20998 W  $3\frac{3}{4}$  yd



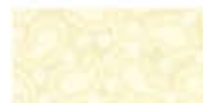
20994 W  $\frac{5}{8}$  yd



21079 Q  $\frac{5}{8}$  yd



20994 Q  $\frac{5}{8}$  yd



21079 S  $\frac{5}{8}$  yd



21080 W 1 yd



20995 WH  $\frac{3}{4}$  yd

# Paisley & Petals

© Possibilities® for Quilting Treasures™

Approximately 85x99" 14¼" block (not including seam allowance)

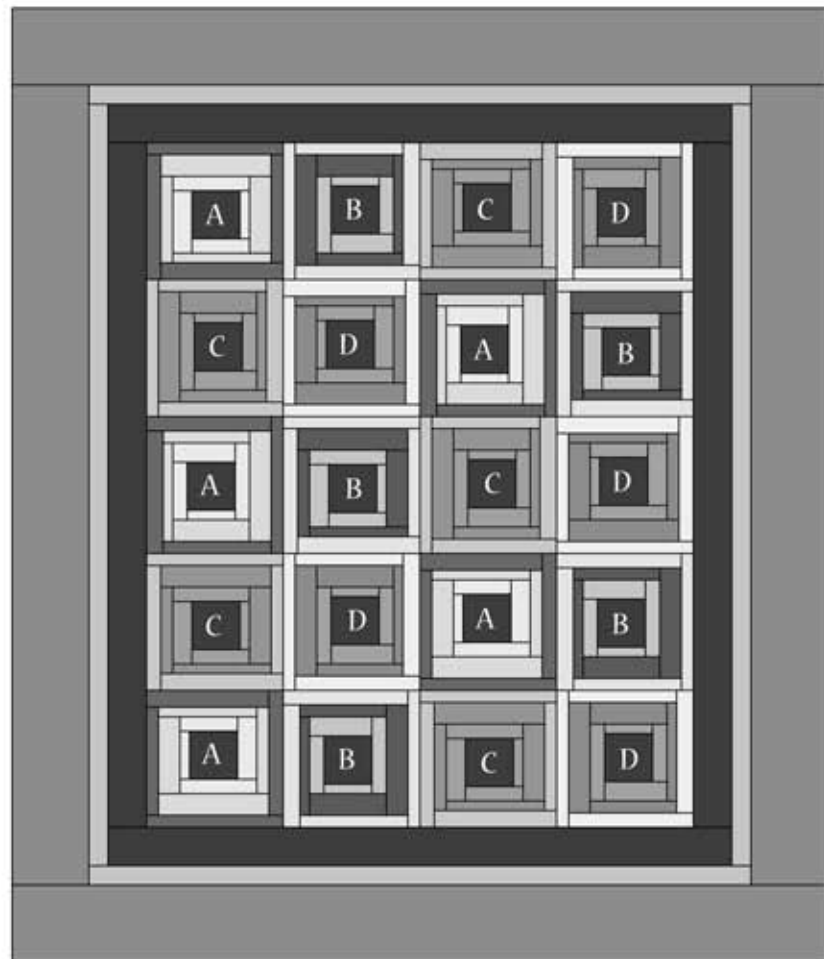
## YARDAGE

Choose fabric with 42" usable width.

### Paisley & Petals Fabrics

Block centers	¾ yd #20993-W
Block A Round 1	½ yd #20996-S
Block B Round 1	½ yd #20996-H
Block C Round 1	½ yd #20999-Q
Block D Round 1	½ yd #20999-A
Block A Round 2	½ yd #21080-H
Block B Round 2	½ yd #20997-A
Block C Round 2	½ yd #21080-A
Block D Round 2	½ yd #20998-W
Block A Round 3	¾ yd #20994-W
Block B Round 3	¾ yd #21079-Q
Block C Round 3	¾ yd #20994-Q
Block D Round 3	¾ yd #21079-S
Border 1	1 yd #21080-W
Border 2	¾ yd #20995-WH
Border 3	2¾ yd #20998-W
Binding	7⁄8 yd #20998-W
Backing	8 yd #20999-Q
Batting	91 x 105"

We recommend labeling the fabrics.



## CUTTING

Cut strips selvage to selvage.

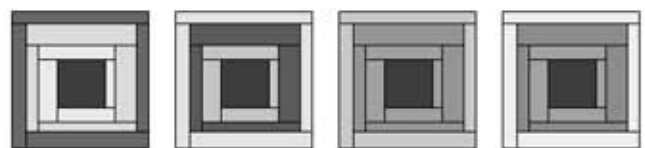
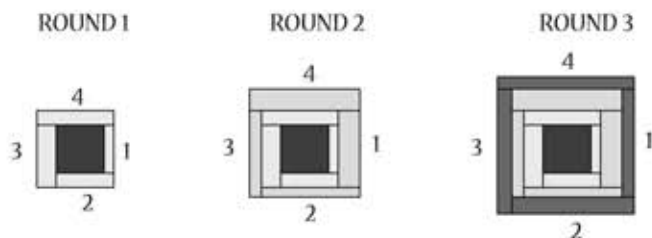
Center square	20 squares 5½"
From each Round 1 fabric	5 pieces 1½ x 5½" - Piece 1 5 pieces 2 x 6½" - Piece 2 5 pieces 2½ x 7" - Piece 3 5 pieces 2 x 8½" - Piece 4
From each Round 2 fabric	5 pieces 2¾ x 8½" - Piece 1 5 pieces 1½ x 10¾" - Piece 2 5 pieces 1¾ x 9½" - Piece 3 5 pieces 2¾ x 12" - Piece 4
From each Round 3 fabric	5 pieces 1¾ x 11¾" - Piece 1 5 pieces 2¼ x 13¼" - Piece 2 5 pieces 2 x 13½" - Piece 3 5 pieces 1¾ x 14¾" - Piece 4
Border 1	7 strips 4½"
Border 2	8 strips 2½"
Border 3	9 strips 8½"
Binding	10 strips 2½" wide

## DIRECTIONS

Use ¼" seam allowance unless otherwise noted. Press as desired.

- BLOCKS:** Make 20 blocks as shown. Numerals indicate piece numbers and order to stitch pieces to block for each row.
- ASSEMBLE:** Referring to diagram, place blocks in order shown and rotated as shown. For rotating the blocks, it's easiest to look at Piece 1 in Round 1 because it's narrow. Stitch blocks into five horizontal rows of four. Stitch rows together.

- LAYER & QUILT:** Piece backing—3 horizontal panels—to same size as batting. Layer and quilt. Trim batting and backing even with quilt top.
- BIND:** Stitch binding strips end to end. Press in half lengthwise, wrong sides together. Bind quilt using ¾" seam allowance.



Block A · Make 5    Block B · Make 5    Block C · Make 5    Block D · Make 5