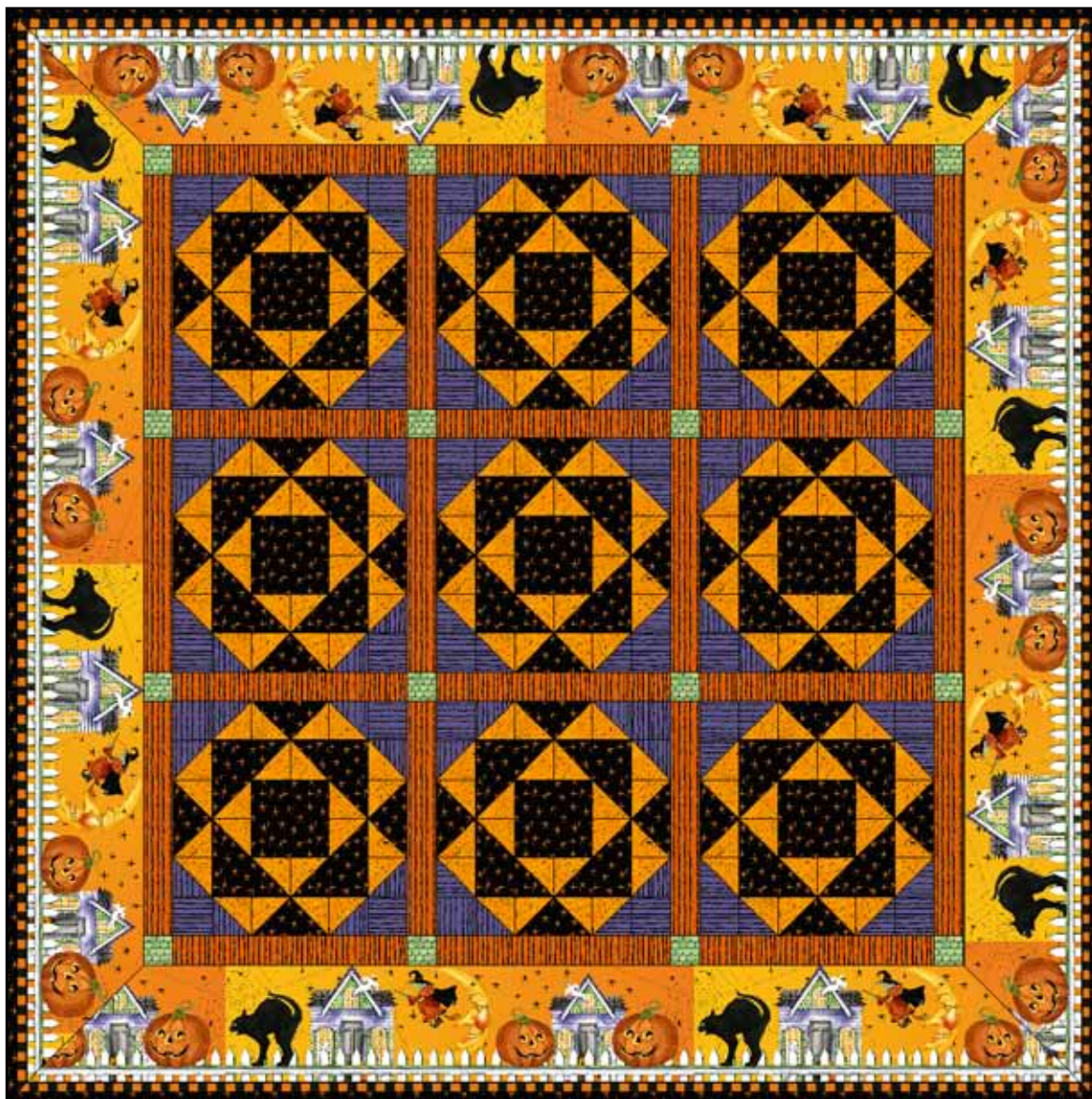
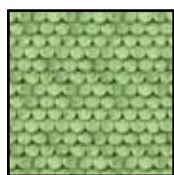


Hairraising Halloween



Finished Size: 55" x 55"



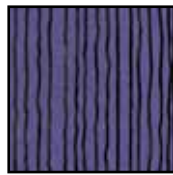
21109 G



21110 J



21111 O



21112 V



21112 O



21108 O



21107 O

QUILT	
DESIGN	YARDAGE
21109 G	1/4
21110 J	1
21111 O	7/8
21112 V	3/4
21112 O	2/3
21108 O	3 1/2
21107 O	1 2/3

Quilt Designed by Vicki Niro

Skill level: Intermediate

Note: Unless noted, measurements are given in inches and seam allowance is $\frac{1}{4}$ ". WOF = width of fabric.

21109-G Green Shingles

Cut (1) 2" x WOF, Subcut (16) 2" x 2"

21110-J Black Star

Cut (1) 4 $\frac{1}{2}$ " x WOF, Subcut (9) 4 $\frac{1}{2}$ " x 4 $\frac{1}{2}$ "

Cut (9) 2 $\frac{7}{8}$ " x WOF, Subcut (72) 2 $\frac{7}{8}$ " x 2 $\frac{7}{8}$ " and (36) 2 $\frac{1}{2}$ " x 2 $\frac{1}{2}$ "

21111-O Orange Spiders

Cut (9) 2 $\frac{7}{8}$ " x WOF, Subcut (108) 2 $\frac{7}{8}$ " x 2 $\frac{7}{8}$ "

21112-V Purple Stripe

Cut (3) 2 $\frac{1}{2}$ " x WOF, Subcut (36) 2 $\frac{1}{2}$ " x 2 $\frac{1}{2}$ "

Cut (3) 2 $\frac{7}{8}$ " x WOF, Subcut (36) 2 $\frac{7}{8}$ " x 2 $\frac{7}{8}$ "

21112-O Orange Stripe

Cut (8) 2" x WOF, Subcut (24) 2" x 12 $\frac{1}{2}$ "

21108-O Border Stripe

Cut (4) 7" x 57" following the lengthwise selvage, centering the border image OUTER BORDER

21108-O Toss

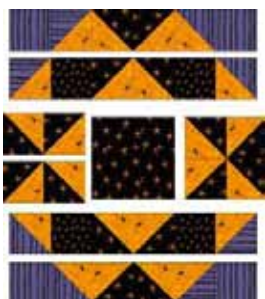
Cut (2) 1 $\frac{3}{4}$ yards, With right sides together sew one long selvage edge with a 1" seam allowance. Trim the seam allowance to $\frac{1}{2}$ " and press seam open. BACKING

Block Assembly:

Draw a diagonal line corner to corner on the wrong side of each 2 $\frac{7}{8}$ " x 2 $\frac{7}{8}$ " Orange Spiders. With right sides together layer the 2 $\frac{7}{8}$ " x 2 $\frac{7}{8}$ " Orange Spiders with the (72) 2 $\frac{7}{8}$ " x 2 $\frac{7}{8}$ " Black Star and the (36) 2 $\frac{7}{8}$ " x 2 $\frac{7}{8}$ " Purple Stripe. Sew a $\frac{1}{4}$ " seam on each side of the drawn line. Cut the unit apart on the drawn line. Press away from the Orange Spiders. (144) Orange Spider/Black Star Half Square Triangle Units (HST) and (72) Orange Spiders/Purple Stripe HST Units.



Using the HST Units from above and the Black Star 2 $\frac{1}{2}$ " x 2 $\frac{1}{2}$ " squares and the Purple Stripe 2 $\frac{1}{2}$ " x 2 $\frac{1}{2}$ " squares, sew rows. Press Rows 1, 3, and 5 to the right. Press Rows 2 and 4 to the left. Sew Rows together to form a Block. Follow block diagram for color placement. Make (9) Blocks



Block Diagram

Row Assembly:

Sew a 2" x 12 $\frac{1}{2}$ " Orange strip to the left side of each Block. Press towards the Orange.

Sew (3) Blocks together to form a Row. The Orange Stripe will be toward the left. Sew a 2" x 12 $\frac{1}{2}$ " Orange Stripe to the right side of each Row. Press towards the Orange. Make (3) Row A



Using the 2" x 2" Green Shingles and the 2" x 12 $\frac{1}{2}$ " Orange Stripe. Press towards the Green. Make (4) Row B



Sew Rows A and B together to make the quilt center per quilt image.

Mitered Border:

On the wrong side of the Quilt Center, place a $\frac{1}{4}$ " mark in each corner. Find the center of the (4) Border pieces, mark with a pin on the side that will be sewn to the Quilt Center. Measure 21 $\frac{1}{2}$ " on either side of center pin and mark with a pin. Find the center of all four sides of the Quilt Center, mark with a pin. Attach the Border to the sides of the Quilt Center, matching the center pins. The remaining (2) pins should match the outside edge of the Quilt Center. Sew the Border starting at the $\frac{1}{4}$ " corner mark and ending at the $\frac{1}{4}$ " corner mark. Leave long thread tails, do not knot or use reverse sewing. DO NOT trim the extra fabric. Repeat on all (4) sides. Press the left and right seam towards the Border and the top and bottom seams towards the Quilt Center. Fold the quilt in half diagonally, right sides together. Diagram 1 Extra Border fabric should extend to the right. Line up the bottom Border fabric edges and nestle the Border seams, pin in place. Draw a line extending the diagonal fold through the Border. This drawn line will make a 45° degree angle with the bottom edge of the Border. Sew on drawn line, leaving long thread tails, open quilt to make sure that the intersection lays flat. Tie off thread tails. Repeat on remaining (3) corners. Layer, quilt and bind.

