

Still



Still

Designer's Statement

May this special collection, in the colors of our favorite things, roses, raspberries, cherries, valentines and lipsticks, convey a sweet message of beauty, humor and encouragement to "still" carry on through life's most challenging experiences.

Loralie



Approximate Finished Size: 53" x 64"

Kit requirements available for download at www.QTFabric.com

Project instructions available in June 2010



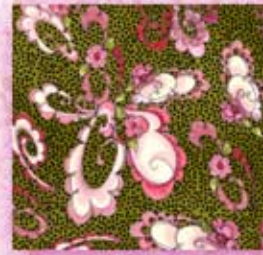
21120 V



21229 V



21230 P



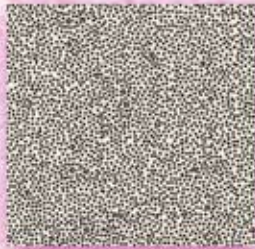
21231 H



21231 VJ



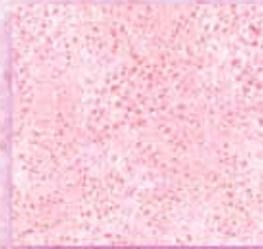
21232 J (backing)



21233 E



21234 H



21234 P



21236 V



21236 VJ

Still



Kit Requirements

Pattern	Yards	12 Kits bolts	18 Kits bolts	24 Kits bolts
21120 V	3/4	1	2	2
21229 VJ	1 3/4	2	3	4
21230 P	1 3/8	2	3	3
21231 H	1/4	1	1	1
21232 J	3 5/8	4	6	8
21233 E	1/8	1	1	1
21234 H	1/4	1	1	1
21234 P	1/4	1	1	1
21236 V	1/2	1	1	1
21236 VJ	5/8	1	1	2
21231 VJ	1/8	1	1	1



Still

Quilt designed by Pat Harrison

Skill level: Intermediate

Finished size: Approximately 53" x 64"

All seam allowances are ¼" unless otherwise specified

Cutting Directions:

Template A: For the flying geese triangles. Draw a rectangle 5" x 3⅝" onto template plastic. Make a mark at 2½" on the 5" side. Draw lines from the mark to the opposite corners to create a 53° triangle. Cut out.

21120V (stripe) - Cut 7 - 2" strips on bias grain for the binding.

21229VJ (picture patch) - Fussy cut 3 panel strips, 48½" x 8¾".

21230P (tossed characters) - Cut 6 - 5" strips. (Border #3)

21231H (olive motif) - Cut 2 - 3⅝" strips for middle goose in block. Use template A to sub cut 12 geese.

21231VJ (black motif) - Cut 2 - 3⅝" strips for top goose in block. Use template A to sub cut 12 geese.

21232J (black floral) - Cut 2 - 3⅝" strips for bottom goose in block. Use template A to sub cut 12 geese.

21233E (black pin dots) - Cut 2 - 2¾" strip, cut into 12 - 3⅝" rectangles, layer rectangles right sides together and sub cut once diagonally to create mirror image triangles for bottom goose background - 24 are used.

21234H (lime mottle) - Cut 2 - 2¾" strip, cut into 12 - 3⅝" rectangles, layer rectangles right sides together and sub cut once diagonally to create mirror image triangles for sub cut once diagonally into triangles for middle goose background - 24 are used.

21234P (pink mottle) - Cut 2 - 2¾" strip, cut into 12 - 3⅝" rectangles, layer rectangles right sides together and sub cut once diagonally to create mirror image triangles for sub cut once diagonally into triangles for top goose background - 24 are used.

21236V (pink hearts) - Cut 6 - 1 ¾" strips. (Border #2)

21236VJ (fuchsia hearts) - Flying Geese Block Side Strips - Cut 6 - 1½" strips, sub cut into 8½" rectangles, 4 per strip, 24 are used. Border #1 - Cut 6 - 1 ½" strips.

Assemble Quilt:

1. Flying Geese Blocks - Create 12 identical blocks. Refer to picture for fabric position as each "goose" and each background is different within the block. Sew background triangles to geese triangles. Press seams away from geese.
2. Arrange three geese triangles in a vertical row, sew together. Sew a block side strip to left and right sides of block to finish block. Sew 6 flying geese blocks together into a vertical strip, make 2 strips.
3. Layout the 3 panel strips with a flying geese strip between each. Working from left to right the order should be: panel, geese strip, panel, geese strip, panel.
4. Sew Border #1 strips together using mitered joins. Repeat with Borders #2, and #3.
5. Create a strata of Borders 1, 2, and 3. Press seams toward Border #1. Measure the Border strata piece across the width of the quilt, mark outer edge and cut 2 strips including enough extra for mitered corner.
6. Measure the Border strata piece across the length of the quilt, mark outer edge and cut 2 strips including enough extra for mitered corner.
7. Fit and sew side Border strata to sides of quilt center, stopping stitching ¼" from corners for miters.
8. Fit and sew top and bottom Border strata to top and bottom of quilt center, stopping stitching ¼" from corners for miters.
9. Miter corners.
10. Layer quilt sandwich and quilt.
11. Sew binding strips together using mitered joins. Press in half lengthwise.
12. Bind quilt

While all possible care has been taken to ensure the accuracy of this pattern, we are not responsible for printing errors or the way in which individual work varies.