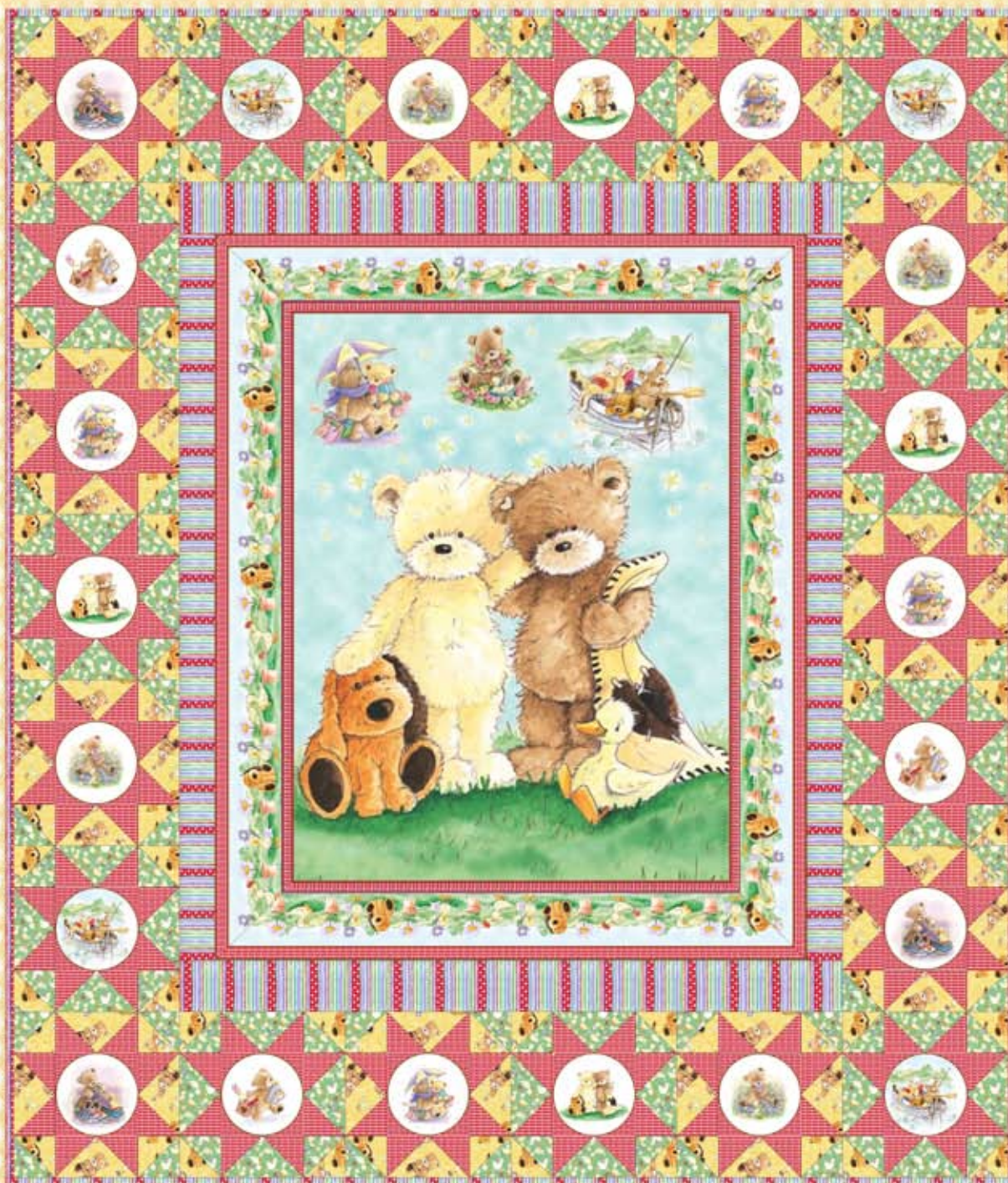


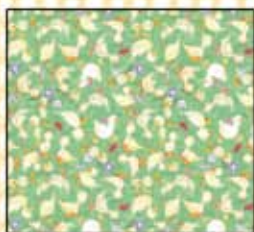
Bear Necessities



Approximate Finished Size: 64" x 74½"

www.QuiltingTreasures.com

Bear Necessities



21163 G



21161 RL



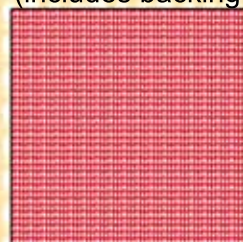
21160 S
(includes backing)



21158 QR



21157 R



21162 R



21156 QR

Kit Requirements

Pattern	Quilt Reqs	12 Kits bolts	18 Kits bolts	24 Kits bolts
21161 RL	1¼	2	2	3
21160 S	5½	6	9	11
21163 G	1½	2	3	3
21156 QR	1	1	2	2
21158 QR	2½	3	4	5
21157 R	¾	1	2	2
21162 R	1	1	2	2

POPCORN THE BEAR QUILT

Size: 64" x 75"

Quilt designed by Aileen Sansone

Skill level – Confident Beginner

Cutting:

21156-QR – Fussy cut 29½" x 38" rectangle, centered on the panel. Panel should include first check border.

21157-R – Fussy cut 22- 5¼" x 5¼" squares, centering a motif in each square

21160-S – Cut four strips 3½" x 42". Subcut strips into 44- 3½" x 3½" squares. Subcut each square on the diagonal to make two half square triangles for a total of 88 half square triangles. Cut two strips 6½" x 42". Subcut strips into eleven 6½" x 6½" squares. Subcut squares on both diagonals to make 44 quarter square triangles.

21161-RL - Cut three strips 2¾" x 42". Cut two strips 3¾" x 42½". Cut seven strips 2½" x 42" for binding.

21162-R– Cut eight strips 3½" x 42". Subcut strips into 88 - 3½" x 3½" squares. Subcut each square on the diagonal to make two half square triangles for a total of 176 half square triangles.

21163-G- Cut four strips 3½" x 42". Subcut strips into 44- 3½" x 3½" squares. Subcut each square on the diagonal to make two half square triangles for a total of 88 half square triangles. Cut two strips 6½" x 42". Subcut strips into eleven 6½" x 6½" squares. Subcut squares on both diagonals to make 44 quarter square triangles.

21158-QR- Fussy cut 2 strips 4¾" x 40". Fussy cut two strips 4¾" x 48". Motif on strip should include smaller stripe with red check border on top.

21160-R- Piece to form back of quilt.

Construction:

Sew with ¼" seam allowance and all fabrics right sides together.

Center of Quilt

1. Sew 4¾" x 48" 21158-QR strips to sides of 21156-QR panel, centering strip on panel and ending stitching ¼" from corners. Sew 4¾" x 40" 21158-QR strips to top and bottom of 21156-QR panel, centering strip on panel and ending stitching ¼" from corners. Miter corners. Quilt center should now measure 38" x 46½".

2. Sew 2¾" x 42" 21161-RL strips together end to end. Subcut into two 2¾" x 46½" strips. Sew 2¾" x 46½" 21161 RL strips to sides of quilt center. Sew

3¾" x 42½" 21161 RL strips to top and bottom of quilt. Quilt center should now measure 42½" x 53".

3. Sew 21160-S half square triangles to 21163-G half square triangles. You will have 88 triangle squares, each measuring 3⅝" x 3⅝".

4. Sew the long sides of two 21162-R half square triangles to each of the short sides of the 21160-S and 21163-G quarter square triangles to make flying geese. Each finished goose should measure 3⅝" x 5¼". You will have 44- 21160-S geese and 44- 21163-G geese.

5. Referring to diagrams below, using the triangle squares and the flying geese as well as the 21157-R fussy cut squares, make eleven each of Block 1 and Block 2.



Block 1



Block 2

6. Sew three Block 1 squares and two Block 2 squares together as shown below. Sew this border to the right side of the quilt center.



7. Sew three Block 2 squares and two Block 1 squares together as shown below. Sew this border to the left side of the quilt center.



8. Make the top and bottom borders by sewing three Block 1 squares and three Block 2 squares together as shown below. Referring to the quilt diagram for placement, sew these borders to the top and bottom of the quilt center.



Layer and quilt as desired.

Binding:

Sew ends of 21161-RL 2½" x 42" together. Fold assembled strip in half lengthwise and press. Sew binding to right side of quilt, mitering corners. Turn binding to the back of the quilt and slipstitch in place.