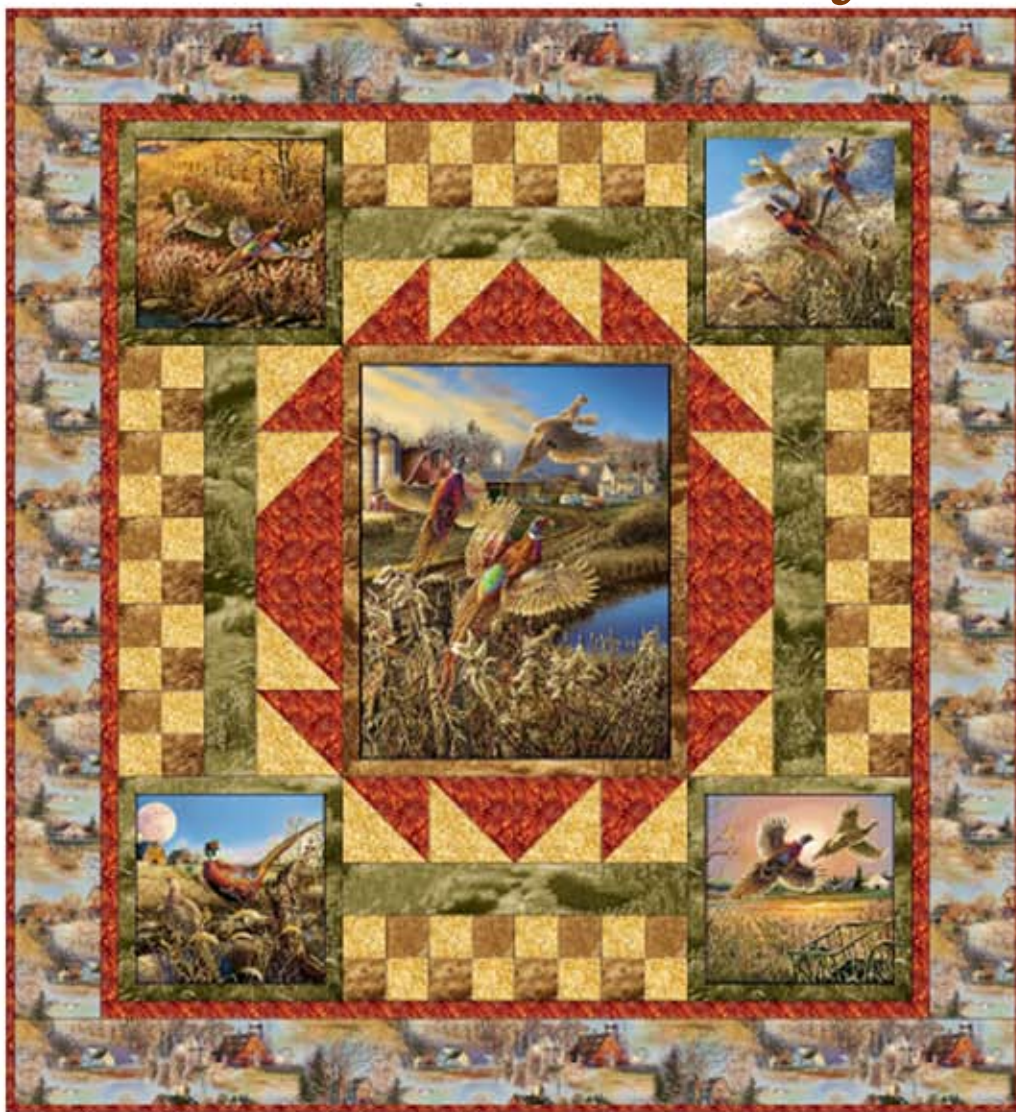


# Pheasant Country



60" x 65"



20781 S 1 Panel



20783 A 2 1/4 yards



20786 R 1 1/4 yards



20785 G 1 yard



20787 S 2/3 yard



20785 A 1/2 yard



20782 A 4 yards

## Pheasant Country

Designed by Karla Schultz

Skill level: Intermediate

### Cutting

- 20781-S** Fussy cut four 11½" x 11½" corner squares  
Fussy cut one 18½" x 23½" center rectangle
- 20785-A** Three 3" strips x width of fabric (WOF)  
Four 1½" x WOF strips, subcut two 1½" x 20½" and two 1½" x 23½" strips
- 20787-S** Two 5⅞" x WOF strips, subcut eight 5⅞" squares, cut each square diagonally to yield 16 triangles.  
Three 3" x WOF strips
- 20786-R** Two 5⅞" x WOF strips, subcut eight 5⅞" squares, cut each square diagonally to yield 16 triangles.  
Subcut two 5½" squares from remainder of strip  
Six 1½" x WOF strips for first border  
Seven 2½" x WOF strips for binding
- 20785-G** Trim selvedge from one side of fabric length. *Cut strips on the lengthwise grain.*  
Two 3½" x 20½" strips  
Two 3½" x 25½" strips  
Eight 1½" strips, from each strip subcut one 1½" x 11½" strip and one 1½" x 13½" strip
- 20783-A** Three 6½" x WOF strips for top and bottom outer borders  
Two 6½" x 53½" strips on *the lengthwise grain* for side outer borders.
- 20782-A** Cut two 42" x 72" lengths of fabric. Trim selvedges. From one length, cut two 13½" x 72" strips.

**Note:** All seam allowances are ¼" unless otherwise specified.

### Piecing:

**Corner blocks:** Sew a green 1½" x 11½" strip to both sides of each corner square. Press seams toward strip. Sew a 1½" x 13½" strip to top and bottom of each square. Press seams toward strip.

**Center rectangle:** Sew brown 1½" x 23½" strips to each side of center rectangle. Press seams toward strip. Sew brown 1½" x 20½" to top and bottom of center rectangle.

### Pieced Units:

Sew gold and brown 3" strips together. Make three strip sets. Press seams open. Cut 36 – 3" units from strip sets. Join 10 units, alternating units to produce checkerboard effect. Make two. Join 8 units, in the same manner. Make two. Set aside.

Sew a green 3½" x 20½" strip to each 8 unit checkerboard. Sew a green 3½" x 25½" strip to 10 unit checkerboard.

Sew rust and gold triangles together to form 16 half-square triangle units (HST).



Reference illustration below, sew 4 HST together. Make two. Sew to one side of each green 20½" strip to complete Top and Bottom Pieced Units.



Sew two HST to each side of a red 5½" square. Make two. Sew to one side of each green 25½" strip to complete Side Pieced Units.



### Quilt Center Assembly:

Sew a Corner Block to each end of a Top and Bottom Pieced Unit referencing quilt image for placement. Press seams toward Corner Blocks.

Sew a Side Pieced Unit to each side of the Center Rectangle. Press seams toward Center Rectangle.

**Inner Border:** Sew red 1½" x WOF strips to form one long strip. Cut two 1½" x 51½" strips for side borders, stitch to side of quilt. Cut two 1½" x 46½" strips for top and bottom borders. Stitch to top and bottom of quilt.

**Outer Border:** Sew two 6½" x 53½" barn print borders to sides of quilt. Sew three 6½" barn print strips together, subcut two 6½" x 58½" strips. Sew to top and bottom of quilt to complete the quilt top.

Sew backing strips together.

Layer, quilt and bind as desired.