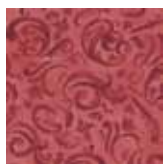




Approximately 62" x 62"



21622 N



21594 M



21590 B



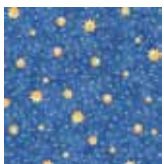
21592 E



21622 E



21594 E



21589 B



21588 B



21587 B

DESIGN	YARDS
21622 N	$\frac{3}{8}$
21594 M	1 (inc binding)
21590 B	$\frac{1}{3}$
21592 E	2
21622 E	$\frac{1}{2}$
21594 E	$\frac{1}{4}$
21589 B	$\frac{3}{4}$
21588 B	$2 \frac{1}{8}$
21587 B	$4 \frac{1}{8}$ (backing)

Quilt Designed By Vicki Niro

Skill level: Advanced, some knowledge of Paper Piecing
Center Star – 20" x 20"

Half Square Triangle Blocks– 6" x 6" and 7" x 7"

Cutting:

21622N – Blue Tonal

Cut (1) 7" x WOF, Subcut (4) 7" x 9½" Paper Piecing

Cut (1) 3½" x WOF, Subcut (4) 3½" x 5½" Paper Piecing

21594M – Red Tonal

Cut (1) 6⅞" x WOF, Subcut (2) 6⅞" x 6⅞" squares

Cut (1) 5½" x WOF, Subcut (4) 5½" x 10" Paper Piecing

Cut (7) 2½" x WOF, Miter short ends together, trim and press seams open. Press strip in half lengthwise with wrong sides together. BINDING

21590B – Light Blue Star

Cut (1) 7⅞" x WOF, Subcut (2) 7⅞" x 7⅞" squares and (4) 3½" x 5½" Paper Piecing

21592E – Gifts

Cut (1) 6⅞" x WOF, Subcut (4) 6⅞" x 6⅞" squares

Cut (1) 7⅞" x WOF, Subcut (2) 7⅞" x 7⅞" squares

Cut (8) 6½" x WOF, Miter short ends together, Trim and press seam open. Subcut (4) 6½" x 20½" and (4) 6½" x 50½"

21622E – Ivory Tonal

Cut (2) 6" x WOF, Subcut (8) 6" x 9½" Paper Piecing

21594E – Gold Tonal

Cut (1) 5½" x WOF, Subcut (4) 5½" x 10" Paper Piecing

21589B – Blue Gold Star

Cut (9) 1½" x WOF, Miter short ends together, trim and press seam open. Subcut (2) 1½" x 32½",

(2) 1½" x 34½", (2) 1½" x 48½", and (2) 1½" x 50½"

Cut (1) 7⅞" x WOF, Subcut (2) 7⅞" x 7⅞" squares and (2) 6⅞" x 6⅞" squares

21588B – Border Stripe

Fussy Cut (4) Images 7½" x 34½" following the length of the stripe

21587B – Allover Print

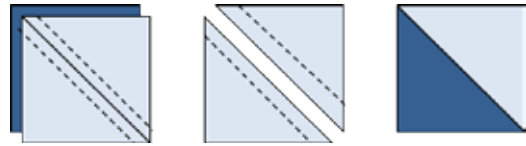
Cut (2) 2 yard pieces, Sew one long selvedge edge, right sides together, with a 1" wide seam. Trim seam to ½" and press open. Trim sides to make a 70" x 70" backing piece. BACKING

Additional materials: Foundation for Paper Piecing

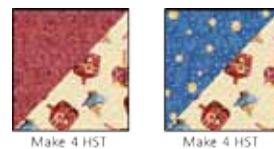
All seams are sewn with a ¼" seam allowance.
Press all seams to the darker fabric.

Half Square Triangles:

Draw a line corner to corner on the wrong side of the Light Blue Star 7⅞" x 7⅞" squares. With right sides together, place a Light Blue Star square on top of each Blue Gold Star 7⅞" x 7⅞" square. Sew a ¼" seam on each side of the drawn line. Cut apart on the drawn line and press seams toward the Blue Gold Star to make (4) Half Square Triangles (HST).



Repeat with the Red Tonal and Gifts 6⅞" x 6⅞" squares and the Blue Gold Star and Gifts 6⅞" x 6⅞" squares.



Paper Pieced Star:

Print Paper piecing Foundations at 100%, choose no scaling in Print Preferences. Verify measurements on foundations before beginning. Enlarge on copier if necessary.

Make (4) copies of each pattern piece, following the manufacturer's directions on the foundation piecing paper. Standard copy paper may be used, make sure your stitch length is between 1.5 and 2mm. Tape pattern pieces together on dotted line to make (4) complete foundation patterns each for Foundation A and Foundation B. Check that each pattern is 8¼" across on the short solid line, as marked on the pattern, and from that line to the point is 10" long. Keep paper attached until each star block is completed. Trim seam allowance to ¼" from dark solid line. Use care when tearing away the paper.

Fabric colors are noted in corresponding section on the foundation paper's right side. Sections are numbered according to order in which they are pieced.

Fold a foundation pattern, wrong sides together, on the line between Section 1 and Section 2. This fold will be used as a placement line for the fabric and will also be the sewing line. Place Fabric 1 on top of the foundation pattern's Section 1. Fabric 1 will be right side up on the wrong side of the foundation pattern. Make sure that Fabric 1 covers all of Section 1. Fabric 1 should over-

hang $\frac{1}{4}$ " into the Sections 2 and 3 areas of the foundation pattern. Use the fold line to help with placement. Lay Fabric 2, right sides together, on top of Fabric 1 matching the raw edges. Pin in place in the seam allowance area (fabric overhang is considered the seam allowance). Fold Fabric 2 over so that the right side shows and make sure it covers all of Section 2 on the foundation pattern and overhangs $\frac{1}{4}$ " into Section 3. Adjust Fabric 2 if needed. Fold Fabric 2 back on top of Fabric 1, right sides together, pin in place at least $\frac{1}{2}$ " away from the seam line (line between Section 1 and Section 2). Turn foundation pattern over so that it is on top and the fabric is on the bottom. Sew on the line between Section 1 and Section 2. Remove pins and double check that all of Section 1 and Section 2 are covered by fabric. Press. Trim seam allowance to $\frac{1}{4}$ ", if necessary.

Fold the pattern on the line between Sections 2 and 3. Lay Fabric 3, right sides together, on top of 1 and 2. Fabric 3 should overhang $\frac{1}{4}$ " into the Section 3 area of the foundation pattern at the fold line. Pin in the seam allowance area. Fold Fabric 3 over so that the right side is showing and make sure it covers all of Section 3 on the foundation pattern. Adjust Fabric 3 if needed. Fold Fabric 3 back on top of Fabric 2, right sides together, pin in place at least $\frac{1}{2}$ " away from the seam line (finger pressed fold). Turn foundation pattern over so that it is on top and the fabric is on the bottom. Sew on the line between Section 2 and Section 3. Remove pins and double check that all of Section 3 is covered by fabric. Trim seam allowance to $\frac{1}{4}$ " Press. Continue in this manner to complete Section B4 on Foundation B. Trim excess fabric around the outside edges of foundation to a $\frac{1}{4}$ " seam allowance from outer dark line.

Repeat to complete (4) gold point pieces A and (4) red point pieces B.

Make 4
A



Make 4
B



Press Pattern Piece, baste around the outside edge, in the middle of the seam allowance. Sew Pattern Pieces together to make Half a Block. Sew (2) Block Halves together to make Star Block. Press all seams to one side, in the same direction. Trim seam allowances to $\frac{1}{4}$ ". Remove the paper patterns.



Borders:

Sew Blue Gold Star/Gifts HST to the ends of a Gift $6\frac{1}{2}$ " x $20\frac{1}{2}$ " strip. Press towards Gifts fabric. Make (2) Border Units A.



Sew the (2) Gift $6\frac{1}{2}$ " x $20\frac{1}{2}$ " piece to the left and right side of the Star Block. Press towards the Gift fabric. Sew the (2) Border Unit A to the top and bottom of the Star Block. Make sure the Blue Gold Star is facing out in each corner. Press towards the Gift fabric. **Quilt Center**



Sew the (2) $1\frac{1}{2}$ " x $32\frac{1}{2}$ " Blue Gold Star to the left and right sides of the Quilt Center. Press towards the Blue Gold Star fabric. Sew the (2) $1\frac{1}{2}$ " x $34\frac{1}{2}$ " Blue Gold Star to the top and bottom of the Quilt Center. Press towards the Blue Gold Star fabric.



Sew Blue Gold Star/Light Blue Star HST to the ends of a Fussy Cut Image $7\frac{1}{2}'' \times 34\frac{1}{2}''$ piece. Watch color placement. Press towards Fussy Cut Image. Make (2) Border Units B.



Sew the (2) $7\frac{1}{2}'' \times 34\frac{1}{2}''$ Fussy Cut Image to the left and right side of the Quilt Center. Watch fabric image direction. Press towards Fussy Cut Image. Sew Border Unit B to the top and bottom of the Quilt Center. Make sure the Blue Gold Star is facing out in each corner. Press towards the Fussy Cut Image.



Sew the (2) $1\frac{1}{2}'' \times 48\frac{1}{2}''$ Blue Gold Star to the left and right sides of the Quilt Center. Press towards the Blue Gold Star fabric. Sew the (2) $1\frac{1}{2}'' \times 50\frac{1}{2}''$ Blue Gold Star to the top and bottom of the Quilt Center. Press towards the Blue Gold Star fabric.



Sew Red Tonal/Gifts HST to the ends of a Gift $6\frac{1}{2}'' \times 50\frac{1}{2}''$ piece. Press towards Gifts fabric. Make (2) Border Units C.



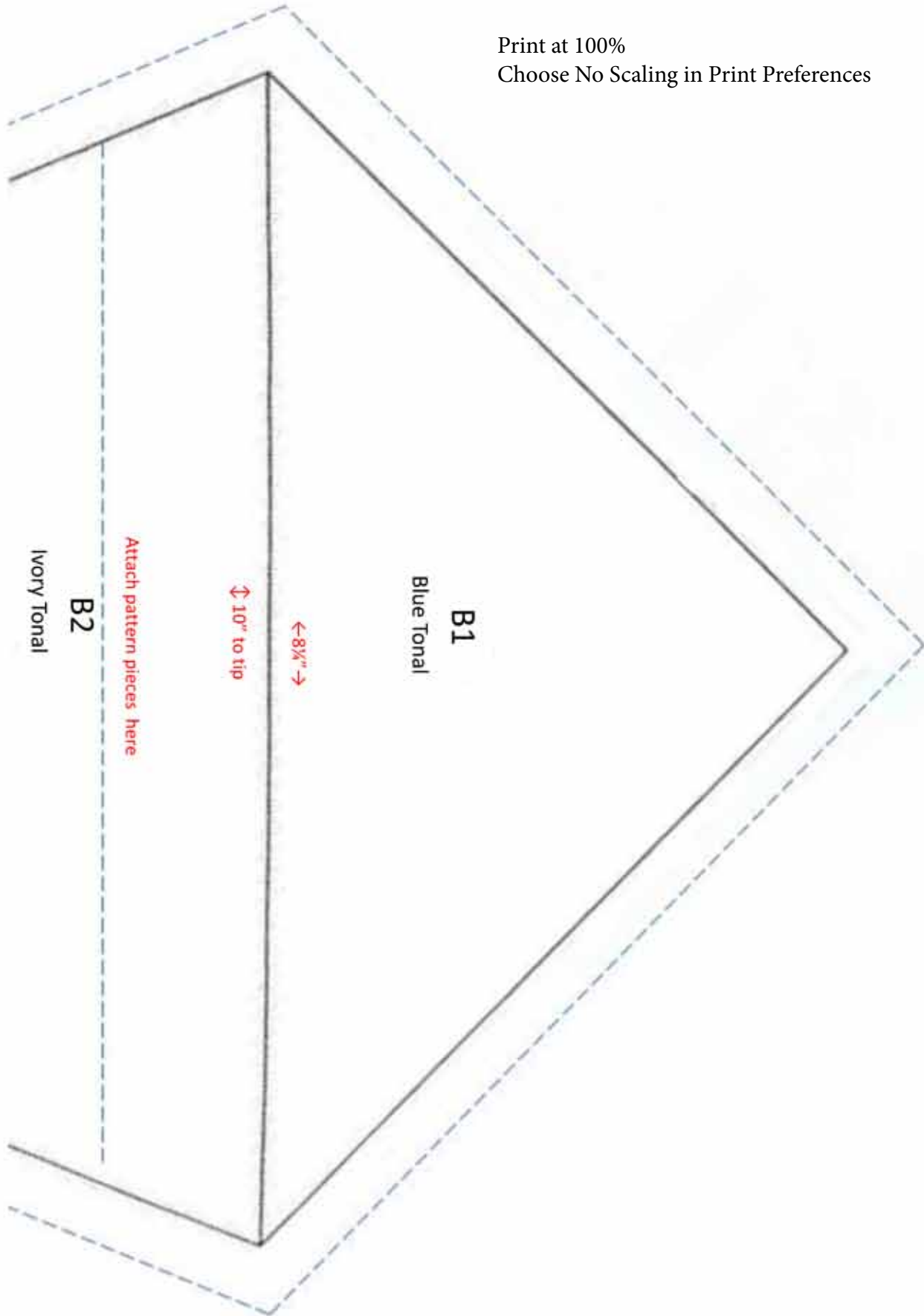
Sew (2) $6\frac{1}{2}'' \times 50\frac{1}{2}''$ Gift to the left and right side of the Quilt Center. Press towards the Gift fabric. Sew the (2) Border Unit C to the top and bottom of the Quilt Center. Press towards the Gift fabric.



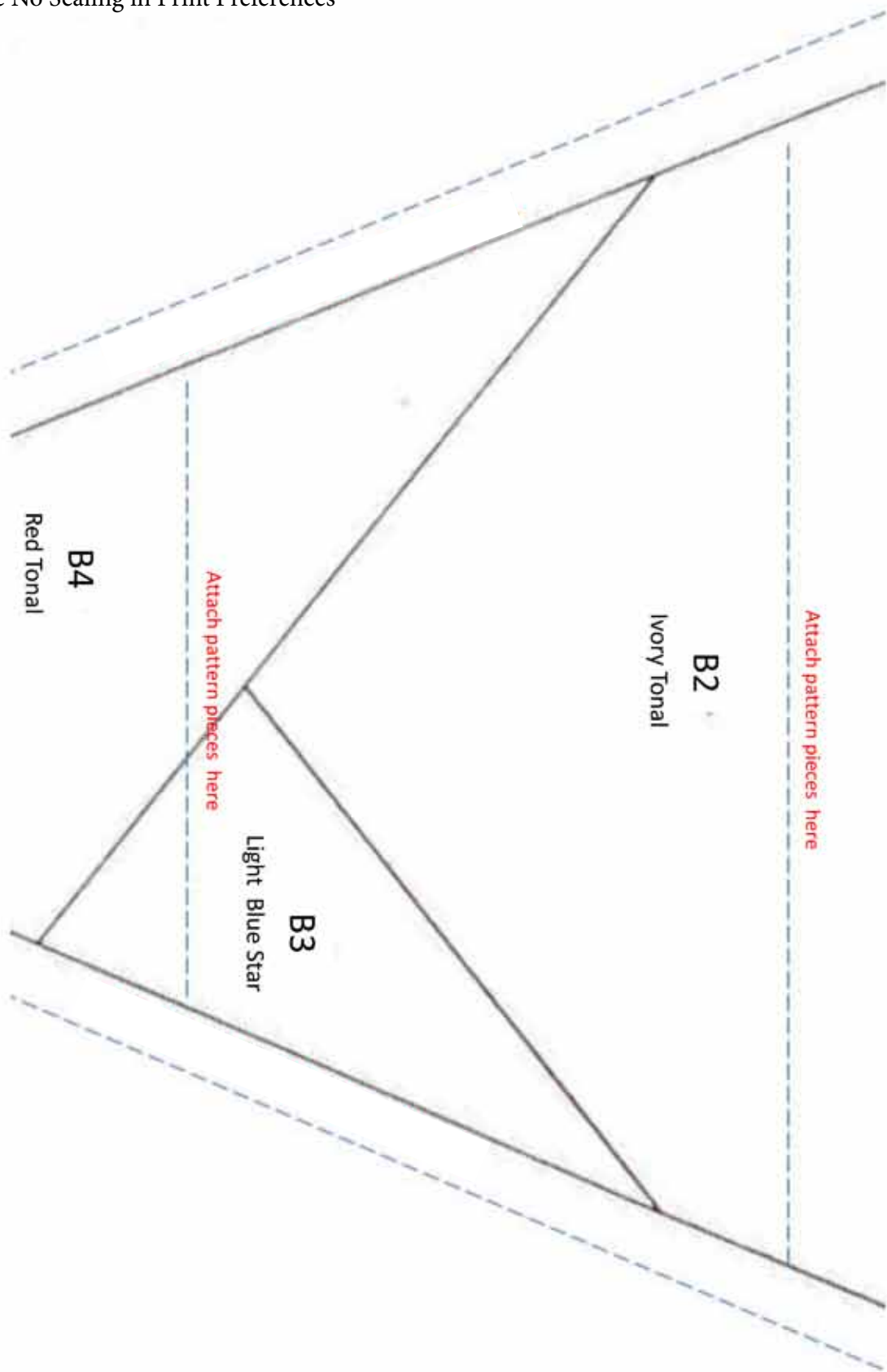
Layer, Quilt and Bind using your favorite methods.

While all possible care has been taken to ensure the accuracy of this pattern, we are not responsible for errors in printing or for the way in which individual work varies.

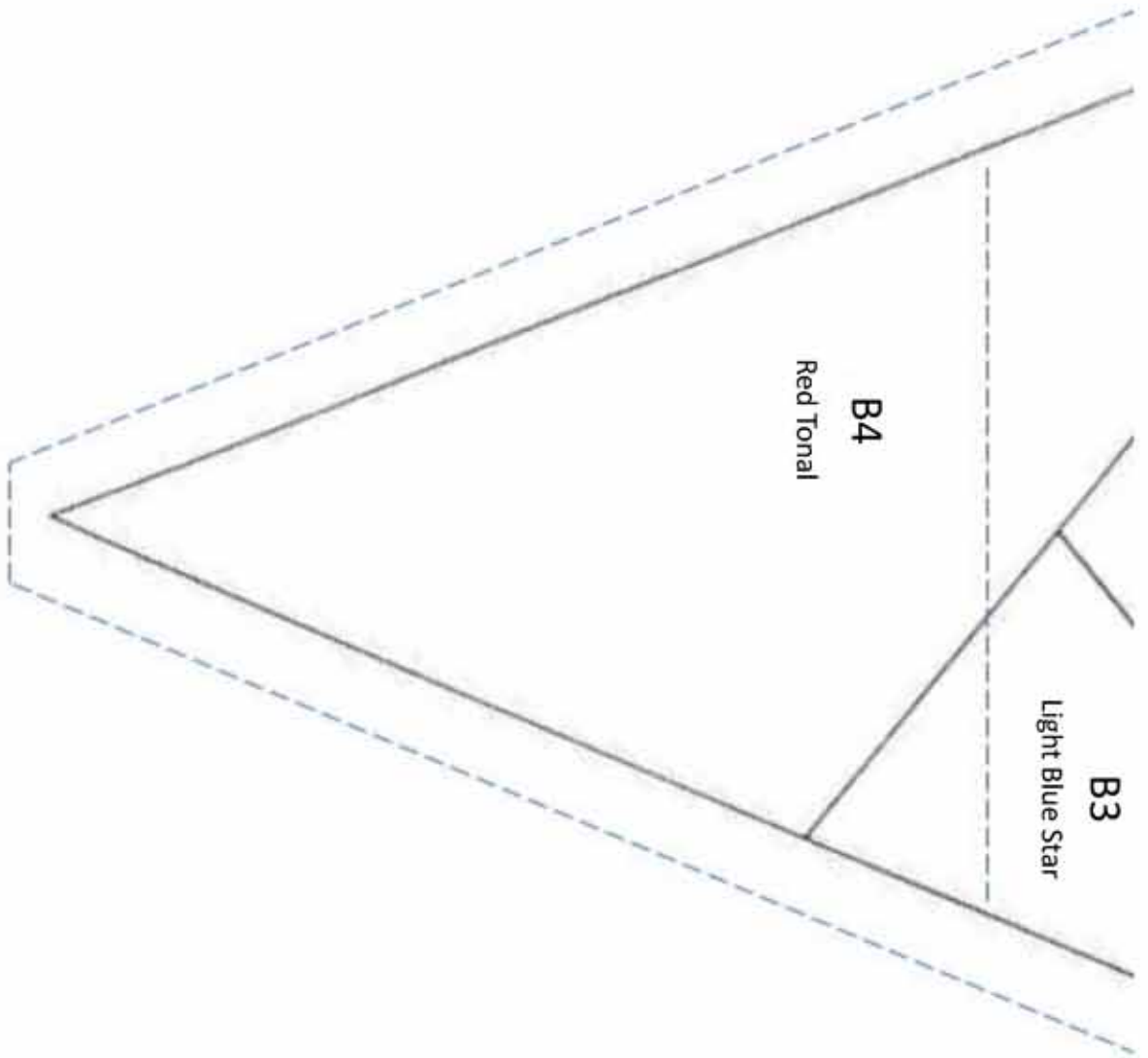
Print at 100%
Choose No Scaling in Print Preferences



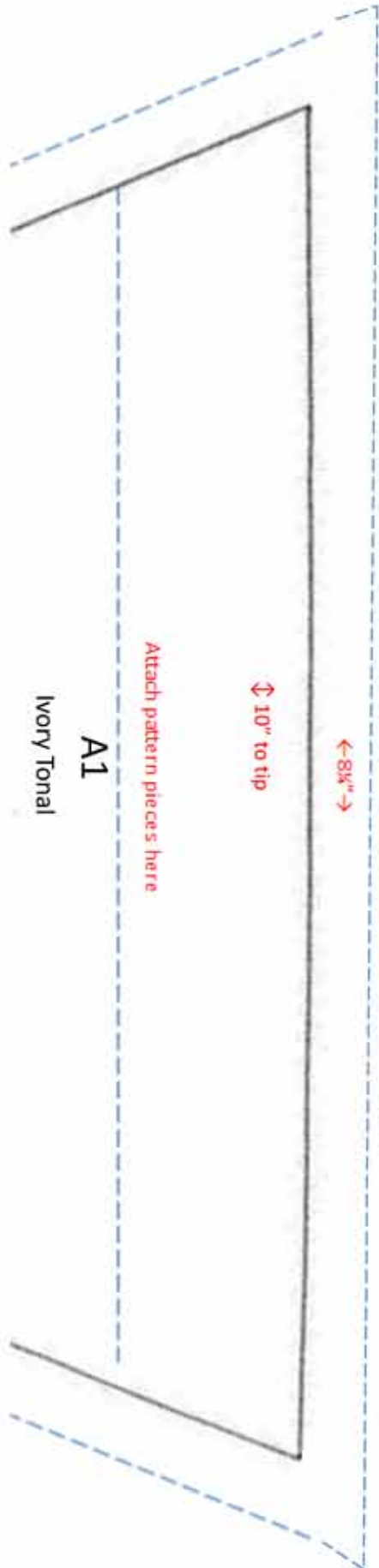
Print at 100%
Choose No Scaling in Print Preferences



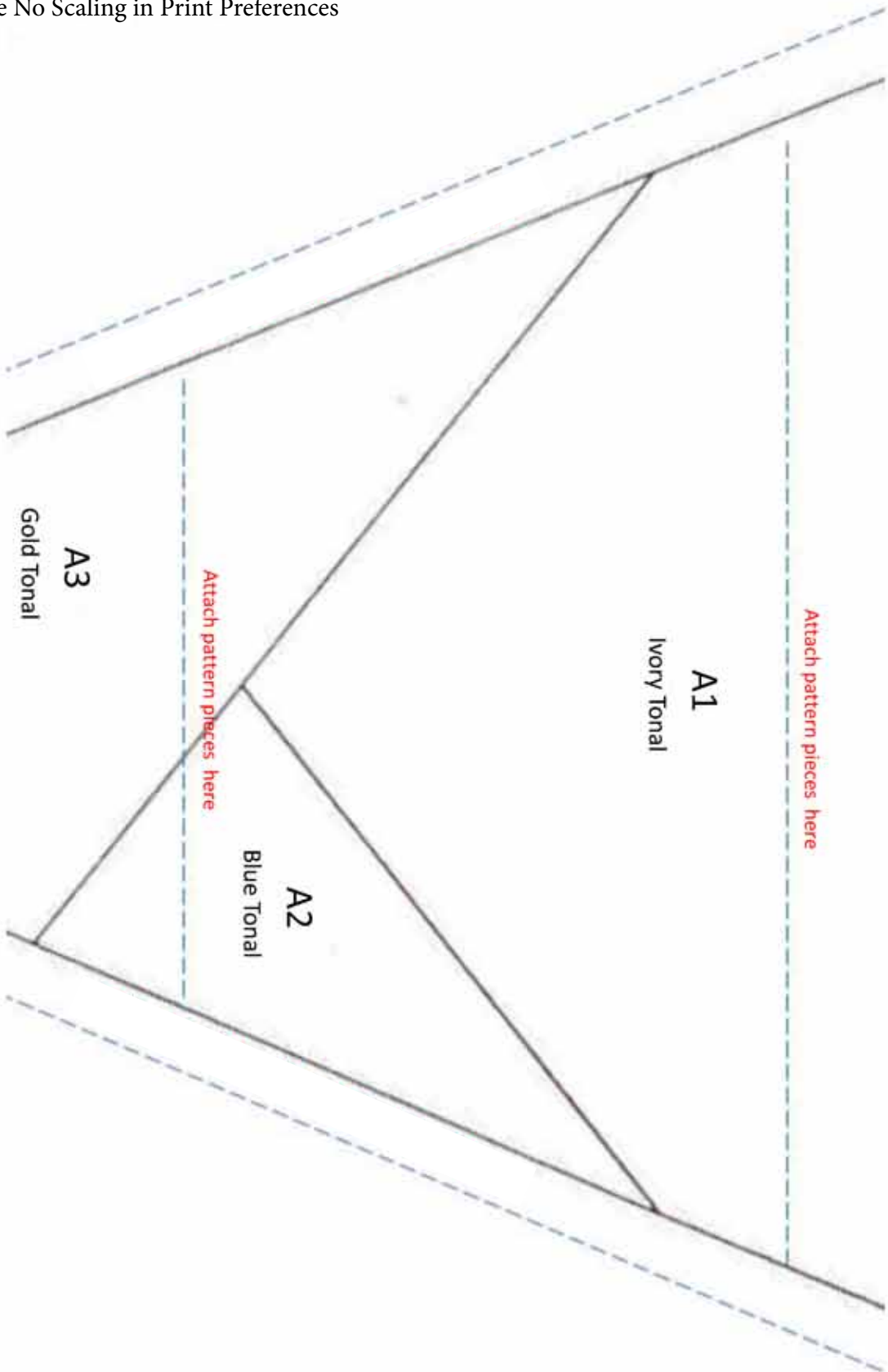
Print at 100%
Choose No Scaling in Print Preferences



Print at 100%
Choose No Scaling in Print Preferences



Print at 100%
Choose No Scaling in Print Preferences



Print at 100%
Choose No Scaling in Print Preferences

