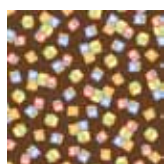


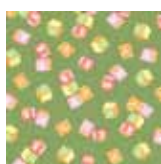
# Baby Bear Hugs



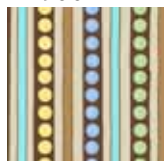
Quilts measure approximately 47" x 55"  
Instructions for Blocks and changing pad included.



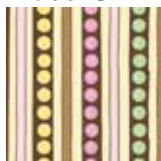
21755 A



21755 G



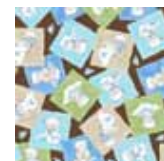
21838 AB



21838 AP



21751 P



21752 AB



21752 AP



21751 B



21754 B



21754 P

BABY BOY HUGS	
DESIGN	YARDS
21751 B	1 PANEL
21752 AB	3½ (backing)
21754 B	1
21755 A	½
21838 AB	¾
BABY GIRL HUGS	
21751 P	1 PANEL
21752 AP	3½ (backing)
21754 P	1
21755 G	½
21838 AP	¾

## Baby Bear Hugs Quilt (Boy and Girl)

Skill level: Beginner

NOTE: All seams are sewn with a ¼" seam allowance. Press all seams toward the border.

### Cutting:

#### 21751B (21751P)– Panel

Cut 35¼" x 43¼" centering image

#### 21754B (21754 P)– Allover Bears

Cut (6) 4½" x Width of Fabric (WOF), Miter short ends together, trim and press seams open.

Subcut (4) 4½" x 47¼"

#### 21755A (21755G)– Blocks

Cut (5) 2½" x WOF, Miter short ends together, trim and press seams open.

Subcut (2) 2½" x 43¼" and (2) 2½" x 39¼"

#### 21838AB (21838 AP) – Stripe - BINDING

Make 220" of 2½" wide Bias Binding using your favorite method.

#### 21752AB (21752 AP)– Patches - BACKING

Cut (2) 1¾ yard pieces, With right sides together and a 1" seam allowance, sew 1 long selvedge edge. Trim seam to ½" and press open.

### Sewing:

Sew the (2) 2½" x 43¼" Block strips to the left and right side of the Center Panel.

Sew the (2) 2½" x 39¼" Block strips to the top and bottom of the Center Panel. Quilt Center

Sew (2) 4½" x 47¼" Allover Bears to the left and right side of the Quilt Center.

Sew (2) 4½" x 47¼" Allover Bears to the top and bottom of the Quilt Center.

Layer, quilt and bind.

### Changing Pad and Blocks

#### Materials and Cutting

21752 AB Patches ½ yard -

Cut (2) 20" x 15" rectangles

21838 AB Stripe ½ yard - Make 100" of 2½" bias binding

21755 A (brown print) ⅛ yard

Cut 2 - 2" x 22" pieces - TIES

21752 B, 21754 B, 21755 B, 21756 S, 21757 B,

21757 P (Assorted Prints)- ¼ yard each -

Cut (3) 5½" squares of each print

Batting and polyfil stuffing for blocks

### Sewing:

#### Changing Pad

Layer Blue Patches rectangles with batting. Quilt as desired.

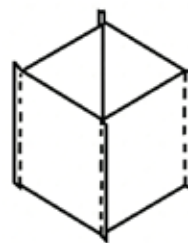
Ties: With right sides together, sew one long edge and one short edge. Turn and press. Mark center of one short side of changing pad. Baste raw edges of ties to raw edge of pad at center (finished edge of ties should point toward center of pad)

Stitch binding on the right side of the pad using a ⅜" seam. Trim batting even with seam. Fold binding to back and stitch invisibly. Roll and secure with ties.

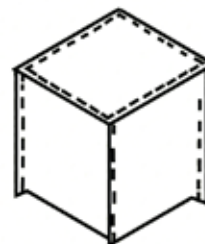
#### Blocks (Make 3)

Sort prints as desired into 3 piles (one for each block).

With right sides together, stitch four squares together, starting and stopping ¼" from each end to form a cube.



Stitch the top square to the top of the cube on four sides, one side at a time, starting and stopping stitching at the side seams. Stitch a square to the bottom of the cube, leaving one side open for stuffing.



Turn block right side out and stuff firmly. Handstitch opening closed.

*While all possible care has been taken to ensure the accuracy of this pattern, we cannot be responsible for errors in printing or the way in which individual work varies.*