



Quilt 1 - using stocking portion of border stripe and reindeer patch

Quilt 2 - using lettering portion of border stripe and stocking patch



Finished Quilt Size (both quilts): 65½" x 78"

Pillow 1 Front



Pillow 2 Front



Back



Finished Pillow Size: 16" x 16"



45736 R



45736 F



45736 A



45732 ER



45734 A



45734 Q



45735 F



45735 R



45731 RG



45733 R

Quilt	
FABRIC REQUIREMENTS	
Design	Yards
45736 R	1¼
45736 F	¾
45736 A	⅝
45732 ER	1¾
45734 A	¾
45734 Q (inc binding)	1⅞
45735 F	1¼
45735 R	1
45731 RG	1⅞
45733 R (backing)	4¾

Throw Pillows	
KIT REQUIREMENTS	
Design	Yards
45732 ER	(remainder from quilt)
45731 RG	(remainder from quilt)
45735 R	¾
45735 F	¾
45736 F	¾
45736 R	¾



## Homespun Holidays

Designed by Wendy Sheppard

Approximate Finished size: 65½" x 78"

Skill Level: Intermediate/Advanced

### Cutting Directions:

*\*Note: All cutting is done across the width of fabric (WOF) unless otherwise noted.*

#### 45736R Red Solid fabric

- Cut three 2 7/8" x WOF strips – recut into thirty-two 2 7/8" squares. Cut once diagonally to yield sixty-four HST's.
- Cut two 3 1/8" x WOF strip – recut into thirty-two 3 1/8" x 1 7/8" rectangles.
- Cut twelve 1 3/4" x WOF strips – stitch together into one long strip. Recut six 1 3/4" x 60 1/2" and two 1 3/4" x 56" strips.

#### 45736F Green Solid fabric

- Cut one 4 1/2" x WOF strip, recut into four 4 1/2" squares.
- Cut two 2 7/8" x WOF strips, recut into sixteen 2 7/8" squares. Cut once diagonally to yield thirty-two HST's.

#### 45736A Gold Solid fabric

- Cut three 2 7/8" x WOF strips, recut into thirty-two 2 7/8" squares. Cut once diagonally to yield sixty-four HST's.
- Cut two 4 5/8" x WOF strip, recut into thirty-two 4 5/8" x 1 7/8" rectangles.

#### 45732ER Stripe Border Print fabric

- Cut two 3 1/2" x 56" strips, lengthwise, centering desired stripe motif (lettering or stocking). Reserve remainder for pillow project.

#### 45734A Tan Stocking Print fabric

- Cut two 3 7/8" x 42" strips – recut into six 3 7/8" x 12 1/2" rectangles.
- Cut one 7 1/4" strip, recut into three 7 1/4" squares. Cut twice diagonally to yield twelve QST's.
- Cut one 5 5/8" x WOF strip, recut into two 5 5/8" x 12 1/2" rectangles.

#### 45734Q Green Stocking Print fabric

- Cut eight 5" x WOF strips.
- Sew strips together and recut to make two 5" x 69" and two 5" x 65" strips.
- Cut eight 2 1/4" x WOF strips for binding.

#### 45735F Green Snowflake Print fabric

- Cut one 3 7/8" x WOF strip. Recut into six 3 7/8" squares. Cut once diagonally to yield twelve HST's.
- Cut one 7 1/4" x WOF strip. Recut into two 7 1/4" squares. Cut twice diagonally to yield eight QST's (will use only six).
- Cut three 3 1/8" x WOF strips. Recut into thirty-two 3 1/8" squares.
- Cut four 1 7/8" x WOF strips. Recut into sixty-four 1 7/8" x 1 7/8" squares.
- Cut two 5 1/4" x WOF strip. Recut into eight 5 1/4" squares. Cut twice diagonally to yield thirty-two QST's.

#### 45735R Red Snowflake Print fabric

- Cut two 3 1/8" x WOF strips. Recut into six 3 1/8" x 12 1/2" rectangles.
- Cut one 3 7/8" x WOF strip. Recut into six 3 7/8" squares. Cut once diagonally to yield twelve HST's.
  - Cut one 7 1/4" x WOF strip. Recut five two 7 1/4" squares. Cut twice diagonally to yield twenty QST's (will use only eighteen).
  - Cut one 4 1/2" x WOF strip, recut into four 4 1/2" squares.
  - Cut two 2 7/8" x WOF strips, recut into sixteen 2 7/8" squares. Cut once diagonally to yield thirty-two HST's.
  - Cut one 2 1/4" x WOF strip, recut into one 2 1/4" x 12 1/2" rectangle.

#### 45732ER Patch Print

- Cut two 6 1/2" x 60 1/2" strips, *lengthwise*, centering column of desired patches (reindeer or stocking). Reserve remainder for pillow project.

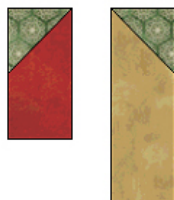
## Blocks Assembly:

*\* Note: Use 1/4" seam allowance throughout, unless otherwise indicated. Sew pieces with right sides together, matching raw edges.*

### A. Pieced Star Blocks (using red star block as example)

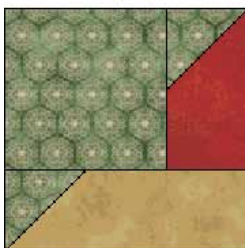
1. With marking pen/pencil mark a diagonal line across the wrong side of eight 1 7/8" green snowflake squares. Place square, right sides together on the end of 1 7/8" x 4 5/8" gold rectangle. Stitch across marked diagonal line. Trim off the corner leaving 1/4" seam allowance. Press towards corner. Repeat to create 4 units. Using 1 7/8" x 3 1/8" red solid rectangle, add 1 7/8" green snowflake square – as in previous step. Create 4 units as shown in Diagram 3.

Diagram 3:



2. Refer to Diagram 4, sew one of each unit made in step 1 and one 3 1/8" green snowflake square together. Repeat to make a total of four combined units.

Diagram 4:



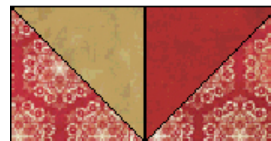
3. Refer to Diagram 5, make a flying geese unit by sewing one 5 1/4" green snowflake QST, one 2 7/8" red solid HST and one 2 7/8" gold solid HST together.

Diagram 5:



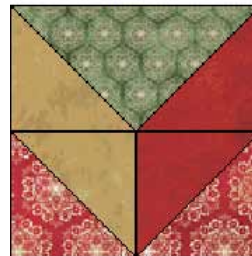
4. Refer to Diagram 6, sew two 2 7/8" red snowflake HST's, one 2 7/8" red solid HST and one 2 7/8" gold solid HST together. Press seams open.

Diagram 6:



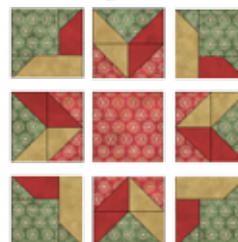
5. Sew the units made in steps 3 and 4 together to make a combined unit. Repeat steps 3 and 4 to make a total of four combined units. Diagram 7

Diagram 7:



6. Arrange together all the units made in steps 2 and 5, and a 4 1/2" red snowflake square. Sew together all the pieces to complete the block according to Diagram 7a. Repeat to make a total of 4 red blocks and 4 green blocks.

Diagram 7a



### B. Zig-zag Block

1. Sew two 7 1/4" red snowflake print QST, one 7 1/4" green snowflake print QST and two 3 7/8" HST's together, as shown in Diagram 8. Make 6.

Diagram 8:



2. Repeat the step with the corresponding red snowflake print and tan stocking print fabric, as shown in Diagram 9. Make 6.

Diagram 9:



3. Referring to Diagram 10, sew the units made in steps 1 and 2, one  $3\frac{7}{8}$ " x  $12\frac{1}{2}$ " tan stocking print rectangle, and one  $3\frac{1}{8}$ " x  $12\frac{1}{2}$ " red snowflake print rectangle together to complete the block.

Diagram 10:



## C. Dividing Block

1. Referring to Diagram 11, sew together one  $2\frac{1}{4}$ " x  $12\frac{1}{2}$ " red snowflake print rectangle and two  $5\frac{5}{8}$ " x  $12\frac{1}{2}$ " tan stocking print rectangles together to complete the block.

Diagram 11:



## Quilt Center Assembly:

1. Referring to the Quilt Center Diagram for block placement, arrange and sew pieced blocks, cut patch print strips and  $1\frac{3}{4}$ " x  $60\frac{1}{2}$ " solid red strips together. See Diagram 12.

Diagram 12



2. Add to the quilt center two  $1\frac{3}{4}$ " x 56" solid red strips and two  $3\frac{1}{2}$ " x 56" stripe units to the opposite short sides of the quilt center. See Diagram 13.

Diagram 13



## Outer Border:

1. Sew two 5" x 69" green stocking print strips to the opposite long sides of the quilt center. Sew remaining two 5" x 65" green stocking print strips to the remaining sides to complete quilt top.

## Finishing:

1. Layer the quilt top, batting and backing to make a quilt sandwich. Baste the layers together. Quilt as desired. Trim backing and batting so that they are even with the quilt top.
2. Bind with green stocking print binding strip.



## Homespun Holiday Pillows

Designed by Quilting Treasures

Approximate finished size 16" x 16"

Skill level: Intermediate

### Cutting Directions :

#### 43735R Red print

- Cut four 2 ½" x 22".

#### 45735F Green print

- Cut four 2 ½" x 22".

#### 45732ER Stripe Border Print

- Print the cutting template for pillow fronts. Be sure to print at 100% and that printer preferences are set to "No Scaling"
- Using the diagram as a guide, line template up on remainder of stripe border print as desired.
- Use a ruler on top of the templates and use that straight edge to rotary cut the template shape. Note- the triangle edges are bias and will stretch easily- handle them carefully.
- Cut two sets of 4 triangles as shown on diagram.

#### 45731RG Patch Print

- From remainder of patch print, cut two squares 12 ½" containing 4 block prints on each square – (the cut block will contain 4 large squares and ¼" seam allowance all around)

#### 45736R Red

- Cut four 2 ½" x 22".

#### 45637F Green

- Cut four 2 ½" x 22".

### Pillow Front Assembly:

1. Fold each triangle in half and mark the center on the outer edge. Fold the 2 ½" x 22" red print and green print strips in half and mark the center of each.
2. Lining up the centers add a red print strip to two of the triangles along the long edge.
3. Repeat with green print strip on remaining two triangles.
4. Using a ruler and lining up with the sides of the triangle, cut the ends of the strips off at the same angle as triangle.

5. Place two triangles with red print strips, right sides together and stitch along one side. Place two triangles with green print strips, right sides together and stitch along one side. Press seams open.

6. Place the two sets of triangles together and stitch to create a square. Press seams open.

### Create the pillow backs:

1. Find and mark with a pin, the center of each red and green strip and also all four sides of the patch print 12½" square.
2. Match the center marks of a red strip and pin to the patch print square.
3. Begin and end stitching ¼" from each corner. Fold the ends of the strip back and pin to hold out of the way. Repeat with remaining red and green strips.
4. Fold the pillow back in half diagonally with wrong sides together. Align the 45 degree angle line of a rotary cutting ruler on the border seam line. Mark a line from the end of the stitching to the outer edge of the border strip ends. Stitch on the marked line. Trim ¼" beyond the stitched line. Unfold the pillow top. Press the mitered corner seam open.
5. Trim strips and press open.

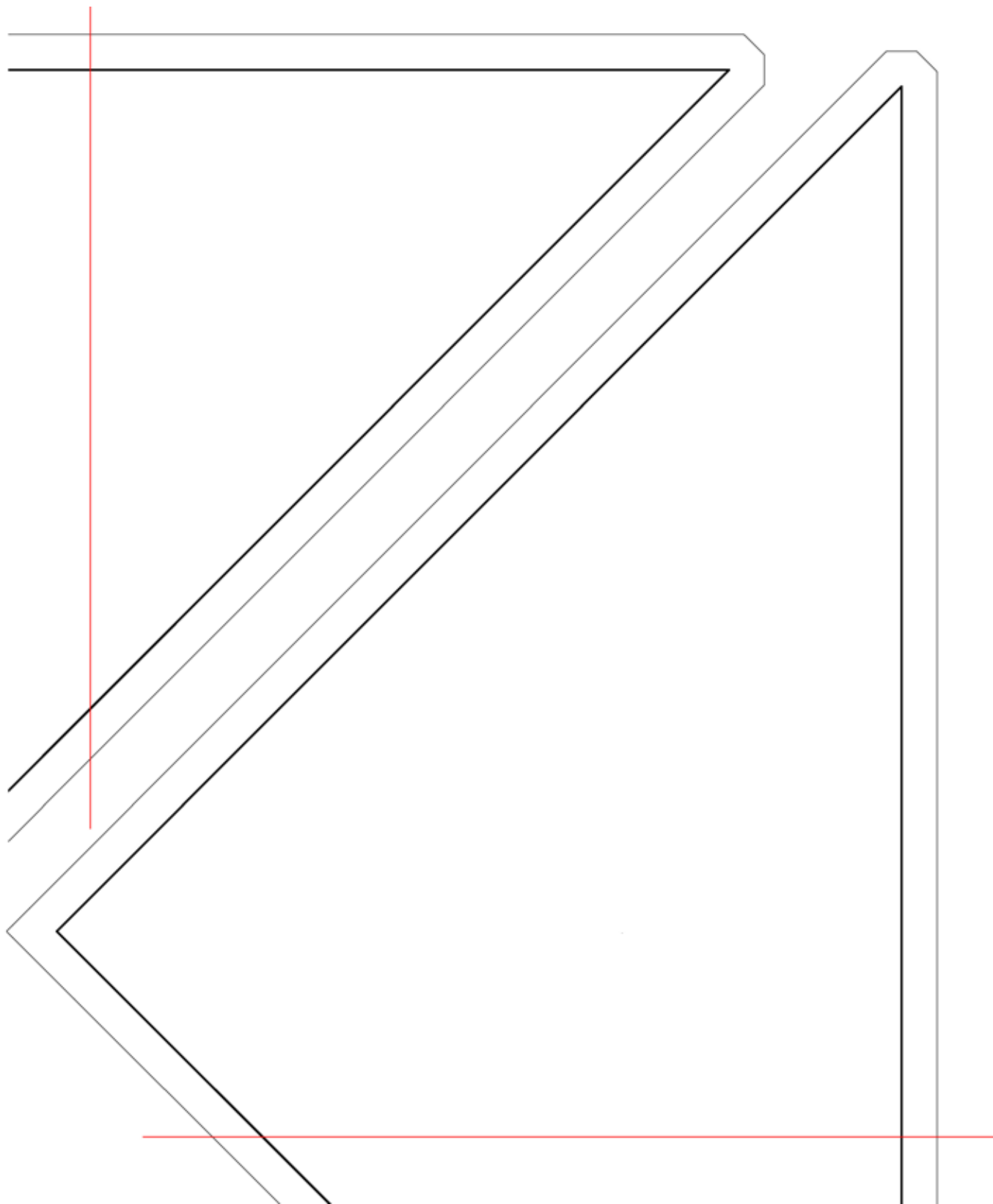
### Finishing:

Place the pillow front and back right sides together together. Stitch around all four sides, leaving a 6" opening for turning on one side. Turn and press. Insert stuffing or pillow form and slip stitch opening closed.



Cutting Diagram

# Homespun Holiday Pillow Template



*While all possible care has been taken to ensure the accuracy of this pattern, we are not responsible for printing errors or the way in which individual work varies.*