



Light Center Quilt



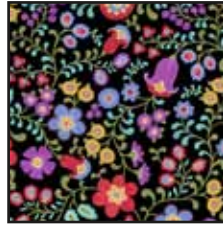
Dark Center Quilt

Design By: Larene Smith
Finished Size: 77" x 94"

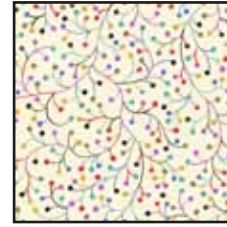
© Christine Graf 2012



22365 E



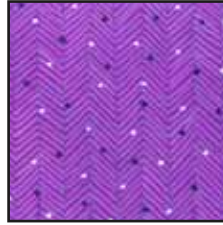
22365 J



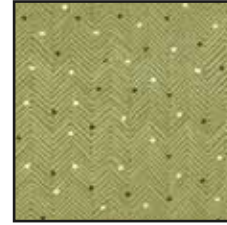
22369 E



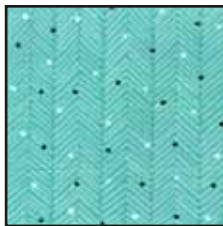
22368 J



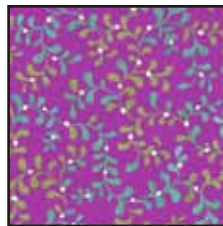
22370 V



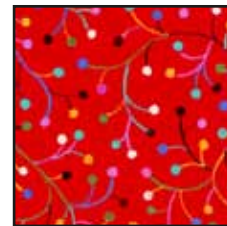
22370 H



22370 Q



22368 V



22369 R

Quilt: Light Center

FABRIC REQUIREMENTS	
Design	Yards
22365 J	2½
22365 E	2¼
22368 J	1
22369 E (Inc. Binding)	1½
22370 V	⅝
22370 H	½
22370 Q	⅝
22368 V	¼
22369 R	¼
22365 J (Backing)	5⅝

Quilt: Dark Center

FABRIC REQUIREMENTS	
Design	Yards
22365 E	2½
22365 J	2¼
22369 E	1
22368 J (Inc. Binding)	1½
22370 V	⅝
22370 H	½
22370 Q	⅝
22368 V	¼
22369 R	¼
22365 E (Backing)	5⅝

Note:

- The instructions are designed around the “Light Center.” If using the “Dark Center” be aware of the fabric color changes.
- All seams are sewn with a ¼" seam allowance.
- Pre wash and press with spray starch.
- Press all seams open unless directed as will decrease bulk.
- Finished Block is 12" square.

WOF = Width of Fabric

HST = Half Square Triangle

Cutting Instructions

22365 J - Black Floral (light center)

22365 E - Ecrú Floral (dark center)

- Cut (4) 3½" wide strips from the length of fabric (parallel to the selvages) for the outer border.
- Cut (1) square at 13¼" and cross-cut twice to yield (4) small triangles.
- Cut (7) squares at 12⅞" and cross-cut once to yield (14) large triangles.

22365 E - Ecrú Floral (light center)

22365 J - Black Floral (dark center)

- Cut (4) strips at 12½" x WOF. Sub cut into (12) 12½" squares.
- Cut (4) strips at 6½" x WOF. Sub cut into (20) 6½" squares.

22370 V - Dotted Blender Purple (either)

- Cut (14) strips at 1¼" x WOF.

22370 Q - Dotted Blender Aqua (either)

- Cut (14) strips at 1¼" x WOF.

22368 J - Black Leaf Vine (light center)

22369 E - Ecrú Dotted Vine (dark center)

- Cut (14) strips at 2" x WOF.

22370 H - Dotted Blender Sage (either)

- Cut (4) strips at 3⅞" x WOF. Sub cut into (40) 3⅞" squares.

22368 V - Leaf Vine Purple (either)

- Cut (2) strips at 3⅞" x WOF. Sub cut into (20) 3⅞" squares.

22369 R - Dotted Vine Red (either)

- Cut (2) strips at 3⅞" x WOF. Sub cut into (20) 3⅞" squares.

22369 E - Ecrú Dotted Vine (light center)

22368 J - Black Leaf Vine (dark center)

- Cut (9) strips at 2" x WOF for the inner border and (10) strips at 2½" x WOF for the binding.

Block A – Make (10)



1. Always refer to Block A (above) as your guide to ensure proper placement of pieces.
2. Sew (1) 22370 Q - Dotted Blender Aqua 1¼" strip to each side of (1) 22368 J - Black Leaf Vine 2" strip to make a new strip at 3½" x WOF. Make (7). Sub cut into (40) 3½" x 6½" rectangles.
3. Draw a line on the wrong side of all of the 22370 H - Dotted Blender Sage 3⅞" squares. Set aside (20) for use in Block B.
4. Using the 22370 H - Dotted Blender Sage 3⅞" squares layer on top of the 22368 V - Leaf Vine Purple 3⅞" squares and sew a ¼" seam on both sides of the drawn line. Make (20). Cut on the drawn line and press open to yield (40) Half Square Triangles (HST) for the corners of the block.

5. Sew (1) of the **HST** to each edge of (1) of the 3½" x 6½" rectangles to make a new rectangle at 3½" x 12½". Make (20). Refer to block diagram for **HST** placement.
 6. Sew (1) 3½" x 6½" rectangle to opposite sides of (1) 22365 E - Ecrú Floral 6½" square. Make (10) new rectangles at 6½" x 12½".
 7. Sew (1) of the 3½" x 12½" rectangles to the top and bottom of the 6½" x 12½" rectangle to finish the block at 12½" square. Refer to block diagram for **HST** placement. Make (10) and set aside for use later.
4. Sew (1) of the **HST** to each edge of (1) of the 3½" x 6½" rectangles to make a new rectangle at 3½" x 12½". Make (20). Refer to block diagram for **HST** placement.
 5. Sew (1) 3½" x 6½" rectangle to opposite sides of (1) 22365 E - Ecrú Floral 6½" square. Make (10) new rectangles at 6½" x 12½".
 6. Sew (1) of the 3½" x 12½" rectangles to the top and bottom of the 6½" x 12½" rectangle to finish the block at 12½" square. Refer to block diagram for **HST** placement. Make (10) and set aside for use later.

Block B – Make (10)



1. Always refer to Block B (above) as your guide to ensure proper placement of pieces.
2. Sew (1) 22370 V - Dotted Blender Purple 1¼" strip to each side of (1) 22368 J - Black Leaf Vine 2" strip to make a new strip at 3½" x **WOF**. Make (7). Sub cut into (40) 3½" x 6½" rectangles.
3. Using the 22370 H - Dotted Blender Sage 3⅞" squares left over from Block A layer on top of the 22369 R - Dotted Vine Red 3⅞" squares and sew a ¼" seam on both sides of the drawn line. Make (20). Cut on the drawn line and press open to yield (40) **HST** for the corners of the block.

Quilt Layout



Small Triangle Corners – Sewn on last

1. Always refer to the Quilt Layout (above) when sewing the blocks together.
2. These blocks are sewn together on the diagonal.
3. It is best to layout each row before sewing them together to make sure the direction of the triangles are in the proper position.

4. The upper right/left and lower right/left small triangles in each corner are sewn on last.
5. 22365 J - Black Floral large triangles are always sewn at the short edge.
6. Row 1: 22365 J - Black Floral (large triangle), Block A, 22365 J - Black Floral (large triangle).
7. Row 2: 22365 J Black Floral (large triangle), Block B, 22365 E Ecrú Floral (12½" square). Block B, 22365 J Black Floral (large triangle).
8. Row 3: 22365 J - Black Floral (large triangle), Block A, 22365 E Ecrú Floral (12½" square), Block A, 22365 E - Ecrú Floral (12½" square), Block A, 22365 J Black Floral (large triangle).
9. Row 4: NO TRIANGLES ARE USED FOR THIS ROW. Block B, 22365 E - Ecrú Floral (12½" square), Block B, 22365 E - Ecrú Floral (12½" square), Block B, 22365 E - Ecrú Floral (12½" square), Block B.
10. Row 5: NO TRIANGLES ARE USED FOR THIS ROW. Block A, 22365 E - Ecrú Floral (12½" square), Block A, 22365 E - Ecrú Floral (12½" square), Block A, 22365 E - Ecrú Floral (12½" square), Block A.
11. Row 6: 22365 J - Black Floral (large triangle), Block B, 22365 E - Ecrú Floral (12½" square), Block B, 22365 E - Ecrú Floral (12½" square), Block B, 22365 J - Black Floral (large triangle).
12. Row 7: 22365 J - Black Floral (large triangle), Block A, 22365 E - Ecrú Floral (12½" square). Block A, 22365 J - Black Floral (large triangle).
13. Row 8: 22365 J Black Floral (Large Triangle), Block B, 22365 J Black Floral (large triangle).
14. Sew the rows together to finish the quilt center and then sew on the 22365 J - Black Floral small triangles to finish the quilt center.

Adding the Borders

1. Refer to the cover picture (page 1) as your guide when adding the borders.
2. Inner border: Using the 2" strips of 22369 E - Ecrú Dotted Vine (light center) or 22368 J - Black Leaf Vine (dark center), cut 2 strips 85½" x 2" for side borders and sew to sides of quilt. Cut 2 strips of 71½" x 2" for top and bottom borders and sew on to the top and bottom of the quilt.
3. Outer border: Using the 3½" strips 22365 J - Black Floral (light center) or 22365 E - Ecrú Floral (dark center), cut 2 strips 88½" x 3½" for side borders and sew to sides of quilt. Cut 2 strips 77 ½" x 3½" for top and bottom borders and sew on to the top and bottom of the quilt.

Finishing the Quilt

1. Layer the backing, batting, and quilt top, and quilt as desired.
2. Using the 22369 E - Ecrú Dotted Vine (light center) or 22368 J Black Leaf Vine (dark center) 2½" strips sew on the binding to finish the quilt.

Jump for Joy and Sing a Song for a quilt well done!

While all possible care has been taken to ensure the accuracy of this pattern, we are not responsible for printing errors or the way in which individual work varies.