

Peony Blush Throw



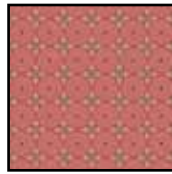
Quilt Designed by: Diane Nagle
Finished Size: 56" X 64"
Quilting Level: Beginner



45771 H



45774 D



45777 D



45775 P



45772 F



45773 P

FABRIC REQUIREMENTS	
Design	Yards
45771 H	2 ³ / ₈
45774 D	1/2
45777 D (inc binding)	1 ¹ / ₈
45775 P	5/8
45772 F	7/8
45773 P (backing)	3 ³ / ₄

Cutting:

WOF = Width Of Fabric

Fabric A 45771H Light green large floral

- (6) strips 6 1/2" x WOF. Outside border.
- (1) 24 1/2" x 32 1/2" rectangle. Center Panel.

Fabric B 45774D Dark Pink tonal

- (5) strips 2 1/2" x WOF. Keyboard Block.

Fabric C 45777D Med Pink print

- (5) strips 2 1/2" x WOF. Inside Border.
- (7) strips 2 1/2" x WOF for binding.

Fabric E 45775P Pink

- (2) strips 2 1/2" x WOF. Keyboard Block strips.
 - (2) strips 4 1/2" x WOF.
- Sub cut (32) 2 1/2" x 4 1/2" rectangles.

Fabric F 45772F Dark Green floral

- (3) strips 2 1/2" x WOF. Keyboard Block strips
 - (3) strips 4 1/2" x WOF.
- Sub cut (36) 2 1/2" x 4 1/2" rectangles.
- (4) 4 1/2" squares. Corner Squares.

Block Assembly:

Keyboard Block: 8 1/2" unfinished

Sew together lengthwise, a Fabric B and E 2 1/2" strip to make strip set as shown in Diagram 1. Repeat to make 2 strip sets and set aside one for now. Press to dark. Cross cut (2) 2 1/2" x 4 1/2" units a.



Diagram 1

Sew a Fabric E 2 1/2" x 4 1/2" rectangle to the right side of each unit a as shown, to complete unit b.



Make 2

Sew two units b together side by side for the pink half of the block as shown.



Repeat this process, sewing a Fabric B to the bottom of an F 2 1/2" strip to make strip set shown in diagram 2. Make 3 strip sets, and set all but one aside. Cross cut (2) 2 1/2" x 4 1/2" units c, and sew a Fabric F 2 1/2" x 4 1/2" rectangle to the left side of unit c, making unit d. Sew two units d together to make the green half of the block.



Diagram 2



Units d

Sew the green half to the top of the pink half to complete the block. Repeat this process using the remaining strip sets to make 14 blocks.



Inside Corner Block: 8 1/2" unfinished

Using remaining strip sets and directions for the Keyboard block, make (2) units d, and (1) unit a. Sew a Fabric E 2 1/2" x 4 1/2" rectangle to the left side of a unit a to make unit e.



Sew a Fabric F 4 1/2" square to the left side of a unit d. This is the top half of the block. Now sew a rotated unit d to the left side of a rotated unit e as shown for the bottom half. Sew the top half to the bottom half to complete the block. Make 4.

While all possible care has been taken to ensure the accuracy of this pattern, we are not responsible for printing errors or the way in which individual work varies.



← Top half of block.

← Bottom half of block.

Quilt Assembly:

Sew (4) Keyboard Blocks together side by side. Make 2 sets, and sew to the long sides of the Fabric A 24 1/2" x 32 1/2" rectangle, pink side to center. Sew (3) Keyboard Blocks together in a row. Sew an Inner Corner Block to each end, rotating to match pink sides as shown. Make 2. Sew to the top, rotate and sew to bottom of the quilt center.

Border 1 :

Sew Fabric C 2 1/2" strips together end to end. Sub cut (2) 2 1/2" x 48 1/2" strips and sew to sides of quilt center. Sub cut (2) 2 1/2" x 44 1/2" strips and sew to top and bottom of quilt.

Outer Border:

Sew Fabric A 6 1/2" strips together end to end. Sub cut (2) 6 1/2" x 52 1/2" strips and sew to sides of quilt. Sub cut (2) 6 1/2" x 56 1/2" strips and sew to top and bottom of quilt.

Layer quilt, quilt as desired and bind using the Fabric C 2 1/2" strips.

