

# Peony Blush Throw



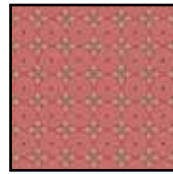
Quilt Designed by: Diane Nagle  
Finished Size: 56" X 64"  
Quilting Level: Beginner



45771 H



45774 D



45777 D



45775 P



45772 F



45773 P

FABRIC REQUIREMENTS	
Design	Yards
45771 H	2 <sup>3</sup> / <sub>8</sub>
45774 D	1/2
45777 D (inc binding)	1 <sup>1</sup> / <sub>8</sub>
45775 P	5/8
45772 F	7/8
45773 P (backing)	3 <sup>3</sup> / <sub>4</sub>

## Cutting:

WOF = Width Of Fabric

### Fabric A 45771H Light green large floral

- (6) strips 6 1/2" x WOF. Outside border.
- (1) 24 1/2" x 32 1/2" rectangle. Center Panel.

### Fabric B 45774D Dark Pink tonal

- (5) strips 2 1/2" x WOF. Keyboard Block.

### Fabric C 45777D Med Pink print

- (5) strips 2 1/2" x WOF. Inside Border.
- (7) strips 2 1/2" x WOF for binding.

### Fabric E 45775P Pink

- (2) strips 2 1/2" x WOF. Keyboard Block strips.
  - (2) strips 4 1/2" x WOF.
- Sub cut (32) 2 1/2" x 4 1/2" rectangles.

### Fabric F 45772F Dark Green floral

- (3) strips 2 1/2" x WOF. Keyboard Block strips
  - (3) strips 4 1/2" x WOF.
- Sub cut (36) 2 1/2" x 4 1/2" rectangles.
- (4) 4 1/2" squares. Corner Squares.

## Block Assembly:

### Keyboard Block: 8 1/2" unfinished

Sew together lengthwise, a Fabric B and E 2 1/2" strip to make strip set as shown in Diagram 1. Repeat to make 2 strip sets and set aside one for now. Press to dark. Cross cut (2) 2 1/2" x 4 1/2" units a.



Diagram 1

Sew a Fabric E 2 1/2" x 4 1/2" rectangle to the right side of each unit a as shown, to complete unit b.



Make 2

Sew two units b together side by side for the pink half of the block as shown.



Repeat this process, sewing a Fabric B to the bottom of an F 2 1/2" strip to make strip set shown in diagram 2. Make 3 strip sets, and set all but one aside. Cross cut (2) 2 1/2" x 4 1/2" units c, and sew a Fabric F 2 1/2" x 4 1/2" rectangle to the left side of unit c, making unit d. Sew two units d together to make the green half of the block.



Diagram 2



Units d

Sew the green half to the top of the pink half to complete the block. Repeat this process using the remaining strip sets to make 14 blocks.



### Inside Corner Block: 8 1/2" unfinished

Using remaining strip sets and directions for the Keyboard block, make (2) units d, and (1) unit a. Sew a Fabric E 2 1/2" x 4 1/2" rectangle to the left side of a unit a to make unit e.



Sew a Fabric F 4 1/2" square to the left side of a unit d. This is the top half of the block. Now sew a rotated unit d to the left side of a rotated unit e as shown for the bottom half. Sew the top half to the bottom half to complete the block. Make 4.

*While all possible care has been taken to ensure the accuracy of this pattern, we are not responsible for printing errors or the way in which individual work varies.*



← Top half of block.

← Bottom half of block.

### Quilt Assembly:

Sew (4) Keyboard Blocks together side by side. Make 2 sets, and sew to the long sides of the Fabric A 24 1/2" x 32 1/2" rectangle, pink side to center. Sew (3) Keyboard Blocks together in a row. Sew an Inner Corner Block to each end, rotating to match pink sides as shown. Make 2. Sew to the top, rotate and sew to bottom of the quilt center.

### Border 1 :

Sew Fabric C 2 1/2" strips together end to end. Sub cut (2) 2 1/2" x 48 1/2" strips and sew to sides of quilt center. Sub cut (2) 2 1/2" x 44 1/2" strips and sew to top and bottom of quilt.

### Outer Border:

Sew Fabric A 6 1/2" strips together end to end. Sub cut (2) 6 1/2" x 52 1/2" strips and sew to sides of quilt. Sub cut (2) 6 1/2" x 56 1/2" strips and sew to top and bottom of quilt.

Layer quilt, quilt as desired and bind using the Fabric C 2 1/2" strips.

