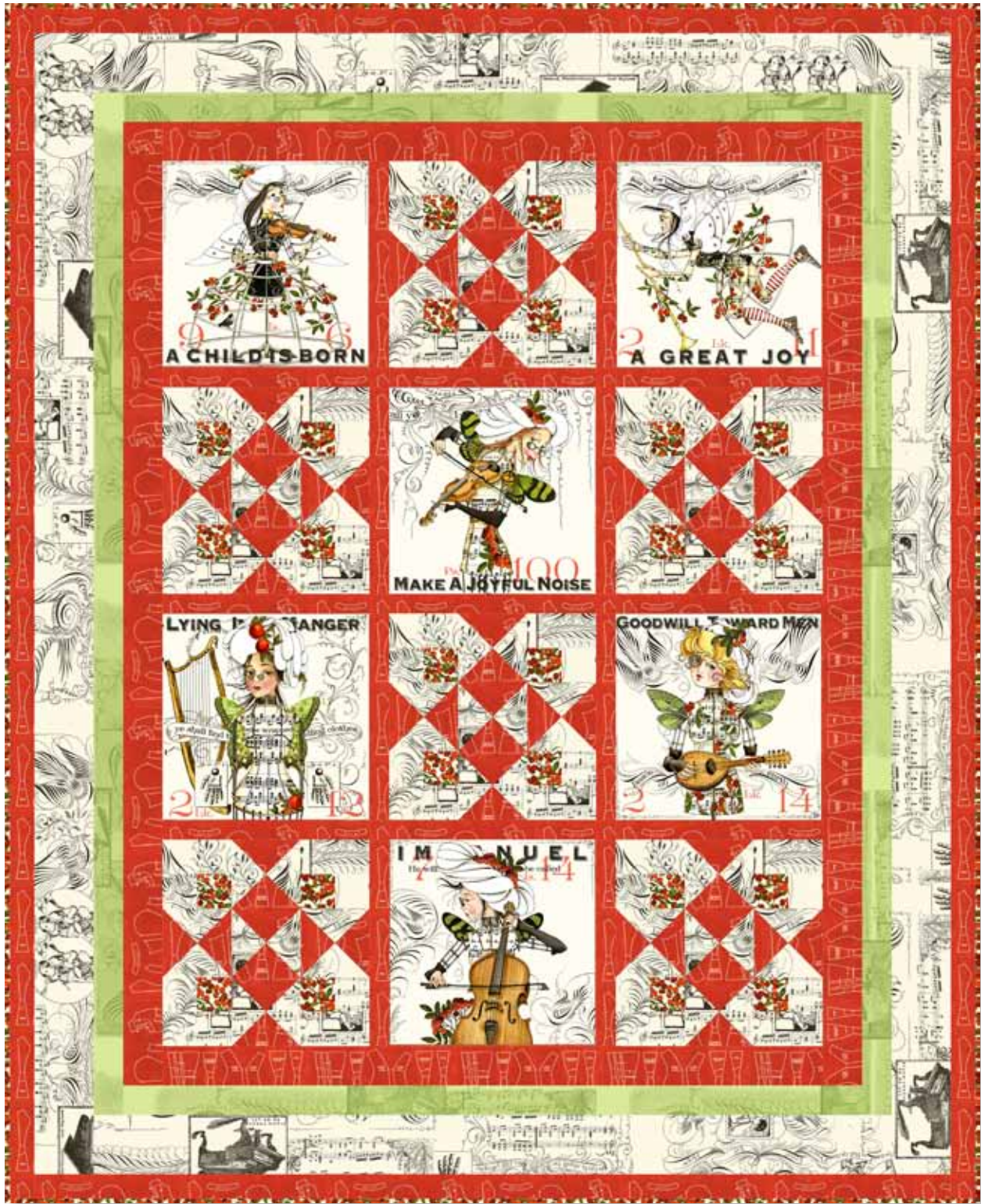


# Angel Band



Designed By: Janet Wecker Frisch  
Finished Quilt Size: 49½" x 61"



23520 ER



23524 E



23524 H



23526 R



23527 E

FABRIC REQUIREMENTS	
Design:	Yards
23520 ER	(1) 24" PANEL
23524 E	1 ¼
23524 H	¾
23526 R	1 ¾
23527 E	¾
Backing of choice	¾

## Cutting Directions:

*Note: A widthwise cut (WOF) is from selvage to selvage.*

### A. 23520 ER: Panel

- Cut blocks as 11" squares centering design within each square.

### B. 23524 E: Ecrú Ephemera Print

- Cut (5) 2 ¼" strips. Use three strips to cut (24) 2 ¼" x 4" rectangles. Remaining strips will be used for strip sets.
- Cut (2) 4 ¾" strips; subcut (15) 4 ¾" squares. Cut each square diagonally in both directions to yield (60) quarter-square triangles.
- Cut (5) 3 ½" strips. Use two strips to cut (2) 3 ½" x 41". Sew the remaining three strips together end to end with diagonal seams; press. Cut (2) 3 ½" x 58 ½".

### C. 23524 H: Green Ephemera Print

- Cut (5) 2" strips. Use two strips to cut (2) 2" x 38" strips. Sew the remaining three strips together end to end with diagonal seams; press. Cut (2) 2" x 52 ½" strips.

### D. 23526 R: Red Pattern Print

- Cut (6) 1 ½" strips. Cut three strips into (8) 1 ½" x 11" strips. Cut the remaining three strips into (3) 1 ½" x 34" strips.
- Cut (6) 1 ¾" strips. Sew together end to end with diagonal seams; press. Cut (2) 1 ¾" x 47" and (2) 1 ¾" x 61".
- Cut (5) 2 1/2" strips. Cut two strips into (2) 2 ½" x 34". Sew the remaining three strips together end to end with diagonal seams; press. Cut (2) 2 ½" x 49 ½".
- Cut (2) 4 ¾" strips; subcut (15) 4 ¾" squares. Cut each square diagonally in both directions to yield (60) quarter-square triangles.

### E. 23527 E: Red/Ecrú Berry Print

- Cut (2) 2 ¼" strips for strip sets.
- Cut (6) 2 ½" strips for binding.

## Construction:

### Hourglass Block:

1. Sew one ecru (B) 4 ¾" triangle to one red (D) 4 ¾" triangle along a short side. Press toward the red triangle. Repeat to make two units.



**Make 2**

2. Sew the two units from step 1 together to complete quarter-square-triangle unit. Press. Repeat step 1 and 2 to make (30) units.



**Make 30**

3. Sew one ecru (B) 2 ¼" strip to a berry (E) 2 ¼" strip. Press toward the red strip. Repeat. Cut strip sets into (24) 2 ¼" segments.



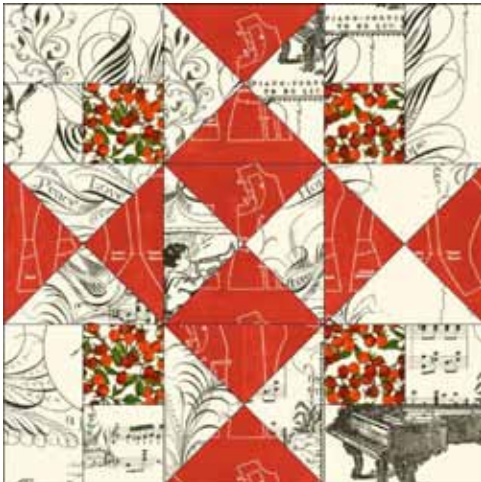
**Cut 24 Segments**

4. Sew a segment from step 3 to one ecru (B) 2¼" x 4" rectangle. Press toward the rectangle. Repeat to make (24) units.



**Make 24**

5. Referring to block diagram and quilt image, sew units together into rows and join rows to complete one block. Repeat to make (6) blocks.



**Make 6**

## Assembly:

1. Refer to quilt image to lay panel squares and pieced blocks into rows. Sew one red (D) 1½" x 11" sashing rectangle between blocks to create four horizontal rows. Press toward the sashing.

*While all possible care has been taken to ensure the accuracy of this pattern, we are not responsible for printing errors or the way in which individual work varies.*

2. Join rows together sewing a red (D) 1½" x 34" sashing strip between each row. Press toward the sashing.
3. First border: Sew a red (D) 2½" x 34" strip to the top and bottom of the quilt. Press toward the borders. Sew a red (D) 2½" x 49½" strip to both sides of the quilt. Press toward the borders.
4. Second border: Sew a green (C) 2" x 38" strip to the top and bottom of the quilt. Press toward the borders. Sew a green (C) 2" x 52½" strip to both sides of the quilt. Press toward the borders.
5. Third border: Sew an ecru (B) 3½" x 41" strip to the top and bottom of the quilt. Press toward the borders. Sew an ecru (B) 3½" x 58½" strip to both sides of the quilt. Press toward the borders.
6. Fourth border: Sew a red (D) 1¾" x 47" strip to the top and bottom of the quilt. Press toward the borders. Sew a red (D) 1¾" x 61" strip to both sides of the quilt. Press toward the borders.

## Finishing:

1. Prepare backing using two widths of fabric and a horizontal seam/s. Press.
2. Layer quilt top, batting and backing. Baste and quilt as desired.
3. Trim layers even with quilt top.
4. Prepare binding using (E) 2½" strips. Sew to quilt using your preferred method.