



# SNOW DAZE



Designed By: Cyndi Hershey  
Finished Quilt Size: 48½" x 64½"  
Skill Level: Beginner  
Block Size: 16"  
Number of Blocks: 12

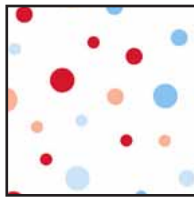




23257 BZ



23260 C



23261 Z



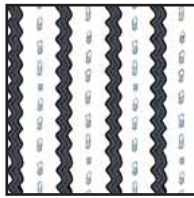
23260 Z



23259 R



23258 C



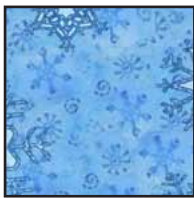
23262 J



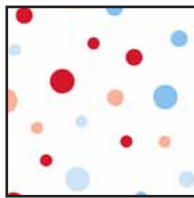
23260 R



23257 BZ



23260 B



23261 Z



23260 Z



23259 B



23258 B



23262 J



23260 R

FABRIC REQUIREMENTS	
Design: Red	Yards
23257 BZ	1
23260 C	1/3
23261 Z	1/3
23260 Z	1 3/4
23259 R	7/8
23258 C	1/2
23262 J	2/3
23260 R	5/8
Backing of choice 54" x 72"	3
Piece of Batting: 54" x 72"	
Basic sewing supplies	

FABRIC REQUIREMENTS	
Design: Blue	Yards
23257 BZ	1
23260 B	1/3
23261 Z	1/3
23260 Z	1 3/4
23259 B	7/8
23258 B	1/2
23262 J	2/3
23260 R	5/8
Backing of choice 54" x 72"	3
Piece of Batting: 54" x 72"	
Basic sewing supplies	

**Designer Notes:**

These directions will make either the RED version or the BLUE version. Fabrics listed solely are used in both color versions. Otherwise, the fabrics are listed according to the RED version first; the fabrics for the BLUE version are listed within the brackets.

**Cutting Directions:**

Note: A widthwise cut (WOF) is from selvage to selvage.

**23257 BZ: Fabric A (patches)**

**Block 1**

- Fussy-cut a total of (6) 12" x 12" Four-Patch block centers, centering the motifs.

**23260 C [23260-B]: Fabric B (snowflake print)**

**Block 2**

- Cut (3) 2 1/2" x WOF strips.

**23261 Z: Fabric C (dots print)**

**Block 2**

- Cut (3) 2 1/2" x WOF strips.



## 23260 Z: Fabric D (white snowflake print)

### Block 1

- Cut (9) 2" x **WOF** strips. Subcut (1) 2" x 15" rectangle AND (2) 2" x 12" rectangles from each of the first 6 strips. Subcut (6) 2" x 15" rectangles from the remaining 3 strips.

### Block 2

- Cut (6) 2" x **WOF** strips. Subcut (12) 2" x 7" rectangles from the first 3 strips. Subcut (12) 2" x 10" rectangles from the remaining 3 strips.
- Cut (6) 4½" x **WOF** strips. Subcut (48) 4½" squares.

## 23259 R [23259-B]: Fabric E (patchwork print)

### Block 2

- Cut (3) 8½" x **WOF** strips. Subcut (24) 4½" x 8½" rectangles.

## 23258 C [23258-B]: Fabric F (snowmen print)

### Block 2

- Cut (2) 7" x **WOF** strips. Subcut (6) 7" squares.

## 23262 J: Fabric G (stripe print)

### Block 1

- Cut (12) 1¾" x **WOF** strips. Subcut (24) 1¾" x 14" rectangles.

## 23260 R: Fabric H (red snowflake print)

### Block 1

- Cut (2) 1¾" x **WOF** strips. Subcut (24) 1¾" squares.

### Binding

- Cut (6) 2½" strips. Piece to make one continuous binding strip.

## Flying Geese Units:

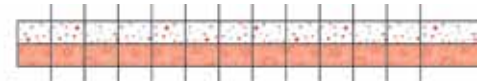
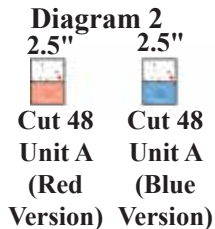
Referring to Diagram 1, draw a diagonal line on wrong side of one Fabric D 4½" square. With right sides together, align the Fabric D square with one end of the Fabric E 4½" x 8½" rectangle. Sew on the drawn line. Open and press to reveal the right side of the Fabric D triangle. To reduce bulk, trim the hidden triangle underneath to ¼" from sewn line. Repeat with another 4½" Fabric D square at the opposite end of the Fabric E rectangle to complete the Flying Geese unit. Unit should measure 4½" x 8½". Make a total of 24 Flying Geese Units.

### Diagram 1



## 4-Patch Units:

Referring to Diagram 2, sew one Fabric B strip to one Fabric C strip to make a strip set. Make a total of 3 strip sets. Crosscut a total of (48) 2½" wide Unit A.



Noting orientation of units in Diagram 3, sew two 2½" Unit A together to make one 4-Patch Unit. Make a total of (24) 4-Patch Units.

### Diagram 3



## Block 1 Assembly:

1. Block Center. Referring to Diagram 4, sew one Fabric D 2" x 12" rectangle to each opposite side of Fabric A 12" square. Sew one Fabric D 2" x 15" rectangle to top and bottom of Block Center. Centering the Fabric A square, trim Block Center to 14" x 14". Make a total of six Block Center units.

### Diagram 4



**Block Center (Trimmed)**

2. Stripe Border. Referring to Diagram 5, sew one Fabric H 1¾" square to each opposite end of one Fabric G 1¾" x 14" rectangle. Make a total of 12 Stripe Border Units.

### Diagram 5





3. Referring to Diagram 6, sew one Fabric G  $1\frac{3}{4}$ " x 14" rectangle to each opposite side of the Block Center. Sew one Stripe Border Unit to top and bottom of Block Center. Block 1 is completed. Block should measure  $16\frac{1}{2}$ " x  $16\frac{1}{2}$ ". Make a total of six Block 1.

**Diagram 6**



### Block 2 Assembly:

1. Block Center. Referring to Diagram 7, sew one Fabric D  $2$ " x  $7$ " rectangle to each opposite side of Fabric F  $7$ " square. Sew one Fabric D  $2$ " x  $10$ " rectangle to top and bottom of Block Center. Centering the framed unit, trim Block Center to  $8\frac{1}{2}$ " x  $8\frac{1}{2}$ ". Make a total of six Block 2 Center Units.

**Diagram 7**



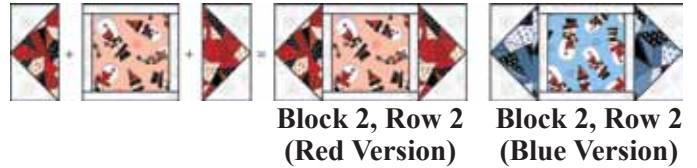
2. Block 2, Row 1. Referring to Diagram 8 and noting orientation of units, sew one 4-Patch Unit to each opposite end of one Flying Geese Unit for Block 2 Row 1. Make a total of twelve Row 1.

**Diagram 8**



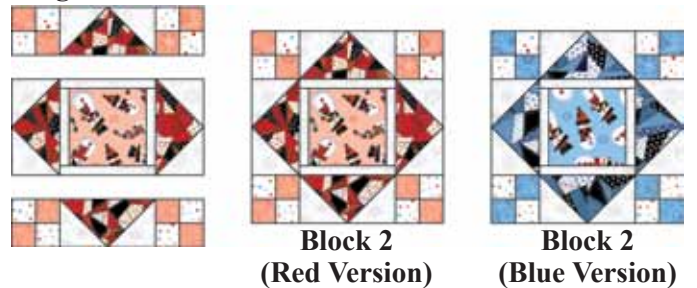
3. Block 2, Row 2. Referring to Diagram 9 and noting orientation of units, sew one Flying Geese Unit to each opposite side of one Block 2 Center Unit. Make a total of six Row 2.

**Diagram 9**



4. Referring to Diagram 10 and noting orientation of rows, sew one Row 1 to top and bottom of Row 2. Block 2 is completed. Block should measure  $16\frac{1}{2}$ " x  $16\frac{1}{2}$ ". Make a total of six Block 2.

**Diagram 10**



### Quilt Top Assembly:

#### Block Rows:

The Quilt Top is made up of four 3-block rows. Each row will measure  $16\frac{1}{2}$ " x  $48\frac{1}{2}$ " when complete. Noting orientation of blocks in Diagram 11, sew four horizontal rows of three blocks each. Sew the four rows together to complete the Quilt Top. The Quilt Top should measure  $48\frac{1}{2}$ " x  $64\frac{1}{2}$ ".





**Diagram 11**



**Finishing:**

1. Layer the Quilt Top right side up on top of the batting and the wrong side of the backing fabric.
2. Baste the layers together and quilt as desired.
3. Bind as desired using the six 2½" Fabric H strips.

*While all possible care has been taken to ensure the accuracy of this pattern, we are not responsible for printing errors or the way in which individual work varies.*