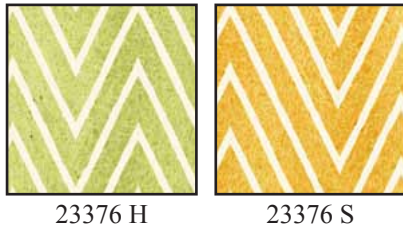
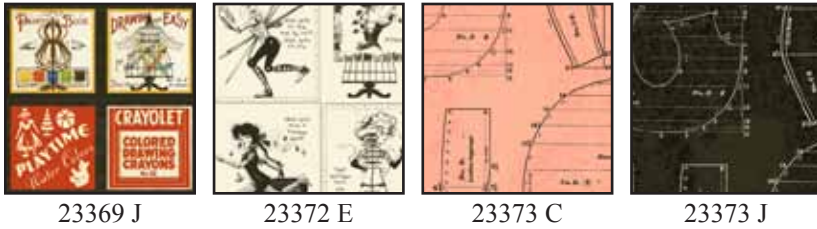


Draw Near



Designed By: Janet Wecker Frisch
Finished Quilt Size: 50½" x 69½"



FABRIC REQUIREMENTS	
Design:	Yards
23369 J	1 PANEL
23372 E	1 $\frac{3}{4}$
23373 C	$\frac{3}{8}$
23373 J	1
23374 X	<i>Fat</i> $\frac{1}{8}$
23375 R	$\frac{3}{4}$
23376 B	$\frac{1}{4}$
23376 H	<i>Fat</i> $\frac{1}{8}$
23376 S	$\frac{1}{4}$
Backing of choice	3 $\frac{1}{2}$

Cutting Directions:

Note: All strips are cut across the width of the fabric (perpendicular to the selvages) unless noted otherwise.

A. 23369 J: Panel

- Large blocks: Cut 11 $\frac{1}{2}$ " squares centering motif within each square.
- Small blocks: Cut 7 $\frac{1}{2}$ " squares centering motif within each square.

B. 23372 E: Black/Ecru Handmaids

- Side borders: From the length of the fabric (parallel to selvages), cut (2) 5" x 57 $\frac{1}{2}$ ". Note: cut along outer edge of vertical "tape measures" that frame the blocks. This should be 5" giving a finished border width of 4 $\frac{1}{2}$ ".
- Top and bottom borders: From the remaining width of the fabric, cut (4) rows along the outer edge of horizontal "tape measure" frames. Sew two rows together aligning blocks as best as possible. Repeat. Cut a 50 $\frac{1}{2}$ " length from each set.
- Cut (4) 4"w x 4 $\frac{1}{2}$ "h rectangles. centering motifs as desired.

C. 23373 C: Coral Toile

- Cut (5) 1 $\frac{1}{2}$ " strips. Sew together end to end; press. Cut (2) 1 $\frac{1}{2}$ " x 41 $\frac{1}{2}$ " and (2) 1 $\frac{1}{2}$ " x 55 $\frac{1}{2}$ ".
- Cut (4) 4" squares.

D. 23373 J: Black Toile

- Cut (5) 4 $\frac{1}{2}$ " strips. Use two strips to cut (2) 4 $\frac{1}{2}$ " x 39 $\frac{1}{2}$ ". Sew remaining strips together end to end; press. Cut (2) 4 $\frac{1}{2}$ " x 47 $\frac{1}{2}$ ".
- Cut (6) 1 $\frac{1}{2}$ " strips. Use two strips to cut (6) 1 $\frac{1}{2}$ " x 11 $\frac{1}{2}$ ". Use one strip to cut (5) 1 $\frac{1}{2}$ " x 7 $\frac{1}{2}$ ". Sew remaining strips together end to end; press. Cut (2) 1 $\frac{1}{2}$ " x 47 $\frac{1}{2}$ ".

E. 23374 X: Paint Box Print

- Cut (4) 4 $\frac{1}{2}$ " squares centering motifs as desired.

F. 23375 R: Red Motif Print

- Cut (7) 2 $\frac{1}{2}$ " strips for binding.
- Cut (4) 4" x 4 $\frac{1}{2}$ " rectangles.

G. 23376 B: Blue Chevron

- Cut (4) 4" squares.
- Cut (4) 4" x 4 $\frac{1}{2}$ " rectangles.

H. 23376 H: Green Chevron

- Cut (4) 4" squares.

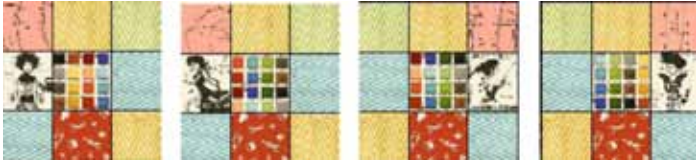
I. 23376 S: Yellow Chevron

- Cut (4) 4" squares.
- Cut (4) 4" x 4 $\frac{1}{2}$ " rectangles.

Construction:

Patchwork blocks:

1. Referring to block images within quilt design, lay out assorted squares to create a total of (4) patchwork blocks. Note that the corner squares in each block use the 4" squares, center square is 4½" and remaining pieces are 4" x 4½".



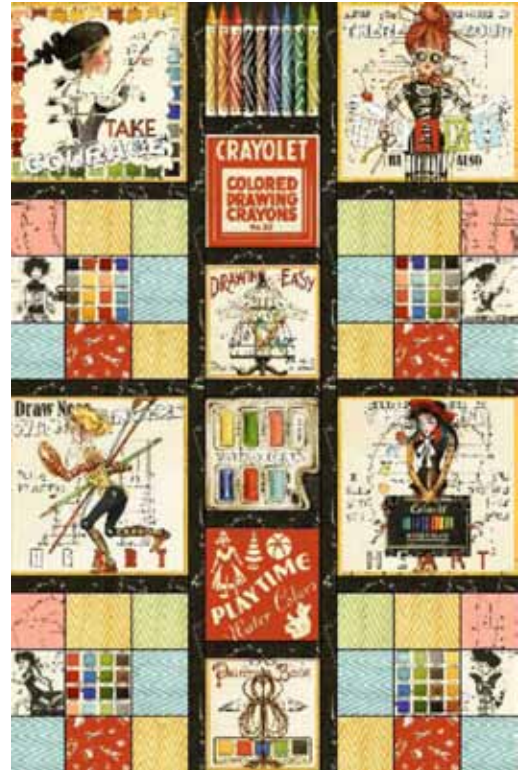
2. Referring to quilt image, sew two rows that each contain two (A) panel squares and two patchwork blocks. Sew (D) 1½" x 11½" black strip between the blocks. Press toward the black strips.



3. Create the center row of quilt, sewing the six (A) small panel squares alternately with (D) 1½" x 7½" black strips. Press toward the panel squares.



4. Sew a (D) 1½" x 47½" strip to each side of the center row. Press toward the black strips.
5. Sew a row from step 2 to each side of the center row. Press toward the black strips.



6. Sew a (D) 4½" x 47½" black strip to both sides of the quilt. Press toward the black strips. Sew a (D) 4½" x 39½" black strip to the top and bottom of the quilt. Press toward the black strips.
7. Sew a (C) 1½" x 55½" coral strip to both sides of the quilt. Press toward the coral strips. Sew a (C) 1½" x 41½" coral strip to the top and bottom of the quilt. Press toward the coral strips.
8. Sew a (B) 5" x 57½" motif strip to both sides of the quilt. Press toward the motif strips. Sew a (B) 6½" x 50½" motif strip to the top and bottom of the quilt. Press toward the motif strips.



Draw Near



Finishing:

1. Prepare backing using sewing two widths of fabric with horizontal seams. Press.
2. Layer quilt top, batting and prepared backing. Baste and quilt as desired.
3. Trim layers even with quilt top.
4. Prepare binding using (F) 2½" red strips. Sew binding to quilt using your preferred method.

While all possible care has been taken to ensure the accuracy of this pattern, we are not responsible for printing errors or the way in which individual work varies.