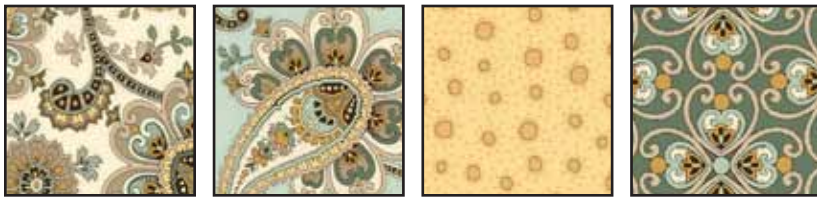


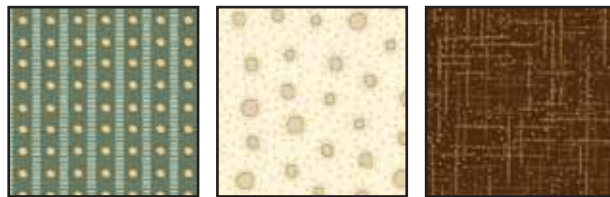
Designed By: Larene Smith, The Quilted Button, Mission Viejo, CA
Finished Quilt Size: 94" x 109"
Block Size: 15" Square
Number of Blocks: 30



23363 E 23363 Q 23368 S 23365 Q



23368 Q 23366 A 23364 Q 23366 Q



23367 Q 23368 E 23078 A
(Inc. Binding)

FABRIC REQUIREMENTS	
Design: Multi	Yards
23363 E	1½
23363 Q	1¼
23368 S	¾
23365 Q	1⅝
23368 Q	1⅜
23366 A	1
23364 Q	⅝
23366 Q	⅝
23367 Q	1
23368 E	1
23078 A	2⅞
23078 A (Binding)	1
Backing	9
Batting 105" x 118"	

Designer Notes:

- Label all fabric when cutting for identification.
- After Outer Border pieces have been cut, label as directed and set aside.
- A widthwise cut (WOF) is from selvage to selvage.

Cutting Directions:

23363 E (Fabric A)

Block A

- Cut (5) 4½" x WOF strips.

Pieced Outer Border and Border Cornerstones

- Cut (3) 8" x WOF strips. Subcut into (12) 8" squares.

23363 Q (Fabric B)

Block B

- Cut (5) 4½" x WOF strips.

Pieced Outer Border

- Cut (2) 8" x WOF strips. Subcut into (8) 8" squares.

23368 S (Fabric C)

Block B

- Cut (5) 4½" x WOF strips.

23365 Q (Fabric D)

Block B

- Cut (8) 4½" x WOF strips.

Pieced Outer Border

- Cut (2) 8" x WOF strips. Subcut into (6) 8" squares.

23368 Q (Fabric E)

Block A

- Cut (8) 4½" x WOF strips.

Pieced Outer Border

- Cut (1) 8" x WOF strips. Subcut into (4) 8" squares.

23366 A (Fabric F)

Block A

- Cut (5) 4½" x WOF strips.

Pieced Outer Border

- Cut (1) 8" x WOF strips. Subcut into (2) 8" squares.

23364 Q (Fabric G)

Block B

- Cut (3) 5½" x WOF strips.

23366 Q (Fabric H)

Block A

- Cut (3) 5½" x WOF strips.

23367 Q (Fabric I)

Block B

- Cut (3) 4½" x WOF strips.

Pieced Outer Border

- Cut (2) 8" x WOF strips. Subcut into (8) 8" squares.

23368-E (Fabric J)

Block A

- Cut (3) 4½" x **WOF** strips.

Pieced Outer Border

- Cut (2) 8" x **WOF** strips. Subcut into (8) 8" squares.

23078-A (Fabric K)

Blocks A and B

- Cut (42) 1½" x **WOF** strips.

Inner Borders

- Cut (11) 2½" x **WOF** strips. Subcut (8) 2½" x 8" rectangles. Piece remaining 2½" x **WOF** strips into one continuous strip then subcut four Inner Borders as follows: (2) 2½" x 79½" rectangles and (2) 2½" x 90½" rectangles.

Binding

- Cut (11) 2½" x **WOF** strips.

Block A Strip Sets:

Strip Set for Unit 1:

1. Sew a 1½" x **WOF** Fabric K between a 5½" x **WOF** Fabric H strip and a 4½" x **WOF** Fabric J strip (see Diagram 1) for one Unit 1 strip set. Make a total of 3 strip sets. Crosscut a total of fifteen 5½" Unit 1 blocks.

Diagram 1
5.5"



Cut 15
Unit 1

Strip Set for Unit 2:

1. Sew a 1½" x **WOF** Fabric K to a 4½" x **WOF** Fabric F strip (see Diagram 2) for one Unit 2 strip set. Make a total of 5 strip sets. Crosscut a total of fifteen 10½" Unit 2 blocks.

Diagram 2
10.5"



Cut 15
Unit 2

Strip Set for Unit 3:

1. Sew a 1½" x **WOF** Fabric K to a 4½" x **WOF** Fabric A strip (see Diagram 3) for one Unit 3 strip set. Make a total of 5 strip sets. Crosscut a total of fifteen 10½" Unit 3 blocks.

Diagram 3
10.5"



Cut 15
Unit 3

Strip Set for Unit 4:

1. Sew a 1½" x **WOF** Fabric K to a 4½" x **WOF** Fabric E strip (see Diagram 4) for one Unit 4 strip set. Make a total of 8 strip sets. Crosscut a total of fifteen 15½" Unit 4 blocks.

Diagram 4
15.5"



Cut 15
Unit 4

Block A Assembly:

1. Referring to Diagram 5 and noting orientation of units, complete Block A using one Unit 1, one Unit 2, one Unit 3, and one Unit 4. Make a total of fifteen 15½" square Block A.

Diagram 5



Block A

Block B Strip Sets:

Strip Set for Unit 5:

1. Sew a 1½" x WOF Fabric K between a 5½" x WOF Fabric G strip and a 4½" x WOF Fabric I strip (see Diagram 6) for one Unit 5 strip set. Make a total of 3 strip sets. Crosscut a total of fifteen 5½" Unit 5 blocks.

Diagram 6
5.5"



Cut 15
Unit 5

Strip Set for Unit 6:

1. Sew a 1½" x WOF Fabric K to a 4½" x WOF Fabric B strip (see Diagram 7) for one Unit 6 strip set. Make a total of 5 strip sets. Crosscut a total of fifteen 10½" Unit 6 blocks.

Diagram 7
10.5"



Cut 15
Unit 6

Strip Set for Unit 7:

1. Sew a 1½" x WOF Fabric K to a 4½" x WOF Fabric C strip (see Diagram 8) for one Unit 7 strip set. Make a total of 5 strip sets. Crosscut a total of fifteen 10½" Unit 7 blocks.

Diagram 8
10.5"



Cut 15
Unit 7

Strip Set for Unit 8:

1. Sew a 1½" x WOF Fabric K to a 4½" x WOF Fabric D strip (see Diagram 9) for one Unit 8 strip set. Make a total of 8 strip sets. Crosscut a total of fifteen 15½" Unit 8 blocks.

Diagram 9
15.5"

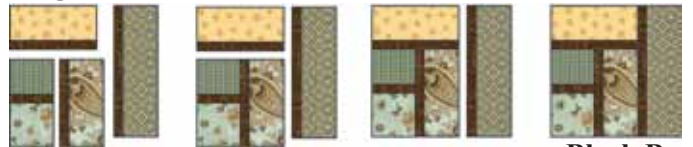


Cut 15
Unit 8

Block B Assembly:

1. Referring to Diagram 10 and noting orientation of units, complete Block B using one Unit 5, one Unit 6, one Unit 7, and one Unit 8. Make a total of fifteen 15½" square Block B.

Diagram 10



Block B

Outer Border Cornerstock Block:

1. Referring to Diagram 11, sew one 2½" x 8" Fabric K rectangle to one 8" Fabric A square. Make a total of four Cornerstone Blocks.

Diagram 11



Cornerstone Block

Quilt Center Assembly:

1. Block Row 1. Referring to Diagram 12 and noting orientation of blocks, sew blocks in order as follows: Block B, Block A, Block B, Block A, Block B.

Diagram 12
Block Row 1



Block B Block A Block B Block A Block B

2. Block Row 2. Referring to Diagram 13 and noting orientation of blocks, sew blocks in order as follows: Block A, Block B, Block A, Block B, Block A.

Diagram 13

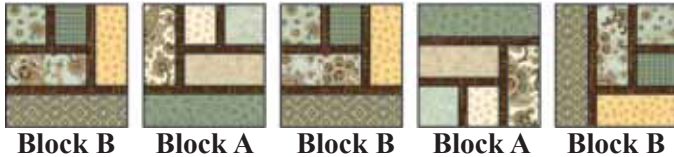
Block Row 2



3. Block Row 3. Referring to Diagram 14 and noting orientation of blocks, sew blocks in order as follows: Block B, Block A, Block B, Block A, Block B.

Diagram 14

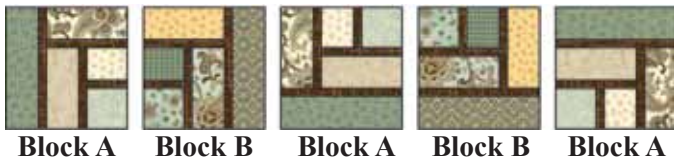
Block Row 3



4. Block Row 4. Referring to Diagram 15 and noting orientation of blocks, sew blocks in order as follows: Block A, Block B, Block A, Block B, Block A.

Diagram 15

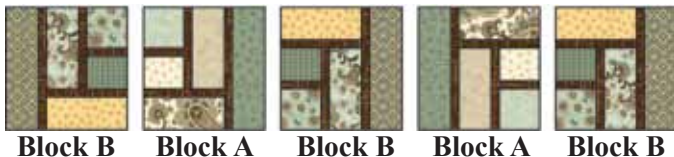
Block Row 4



5. Block Row 5. Referring to Diagram 16 and noting orientation of blocks, sew blocks in order as follows: Block B, Block A, Block B, Block A, Block B.

Diagram 16

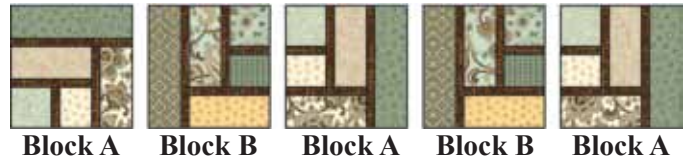
Block Row 5



6. Block Row 6. Referring to Diagram 17 and noting orientation of blocks, sew blocks in order as follows: Block A, Block B, Block A, Block B, Block A.

Diagram 17

Block Row 6



7. Referring to Quilt Layout Diagram and noting orientation of rows, sew rows in order as follows: Block Row 1, Block Row 2, Block Row 3, Block Row 4, Block Row 5. Quilt Center should measure 75½" x 90½".

Quilt Layout Diagram



Quilt Assembly:

1. Inner Border. Sew one 2½" x 90½" Fabric K rectangle to each long side of the Quilt Center. Sew one 2½" x 79½" Fabric K rectangle to top and bottom of the Quilt Center. Quilt Top should measure 79½" x 94½".
2. Pieced Outer Side Borders. Referring to the Quilt Layout Diagram, sew twelve 8" squares together in following order: Fabric A, Fabric I, Fabric B, Fabric J, Fabric E, Fabric D, Fabric F, Fabric D, Fabric J, Fabric B, Fabric I, Fabric A. Sew one 2½" x 8" Fabric K rectangle to each end of the border strip. Border should measure 8" x 94½". Make a total of two borders. Referring to the Quilt Layout Diagram and noting orientation of side borders, attach one border to each long side of the Quilt Center. Quilt Top should measure 94½" x 94½".



Lexington

Multi Version

Kensington
STUDIO

3. Pieced Outer Top/Bottom Borders. Referring to Quilt Layout Diagram, sew ten 8" squares together in the following order: Fabric A, Fabric I, Fabric B, Fabric J, Fabric E, Fabric D, Fabric J, Fabric B, Fabric I, Fabric A. Sew one 8" x 10" Cornerstone Block to each end of the border strip noting block orientation. Border should measure 8" x 94½". Make a total of two borders. Referring to the Quilt Layout Diagram and noting orientation of each border, attach one border to top and bottom of the Quilt Center. Quilt Top should measure 94½" x 109½".

Finishing:

1. Layer the Quilt Top right side up on top of the batting and the wrong side of the backing fabric.
2. Baste the layers together and quilt as desired.
3. Bind as desired using the eleven 2½" Fabric K strips.

While all possible care has been taken to ensure the accuracy of this pattern, we are not responsible for printing errors or the way in which individual work varies.