



Designed By: Desiree Habicht
Finished Quilt Size: 62" x 83½"



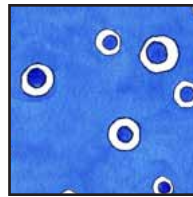
23107 X



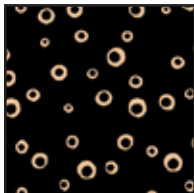
23108 A



23109 R



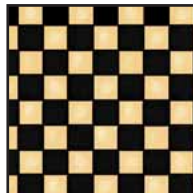
23110 Y



23110 J



23111 J



23112 JA



23113 S



23114 A



23114 R

FABRIC REQUIREMENTS	
Design: Light	Yards
23107 X	1 PANEL
23108 A	2¼
23109 R	<i>Fat</i> ⅛
23110 Y	⅞
23110 J	1¼
23111 J	⅝
23112 JA	½
23113 S	⅛
23114 A	1
23114 R	<i>Fat</i> ⅛
Backing of choice	5

Cutting Directions:

Note: All strips are cut across the width of the fabric unless noted otherwise.

A. 23107 X: Panel

- Cut panel 21½" x 40½" centering design within space.

B. 23108 A: Ecru Tossed Truck Print

- From length of fabric (parallel to selvages), cut two 6" x 62" strips and two 6" x 72½" strips.

C. 23109 R: Red Monster Print

- Cut four 4" squares.

D. 23110 Y: Blue Dots

- Cut one 4" strip.
- Cut four 2" strips. Sew together end to end; press. Cut two 2" x 70½" strips.
- Cut eight 1½" strips. Sew together end to end; press. Cut two 1½" x 21½" strips; two 1½" x 51" strips and two 1½" x 70½" strips.

E. 23110 J: Black Dots

- Cut two 4" strips. Cut one strip into four 4" squares.
- Cut five 2" strips. Sew together end to end; press. Cut four 2" x 14½" strips and two 2" x 70½" strips.
- Cut eight 2½" strips for binding.

F. 23111 J: Black Chevron

- Cut five 3" strips. Sew together end to end; press. Cut four 3" x 14½" strips and two 3" x 70½" strips.

G. 23112 JA: Ecru/Black Checks

- Cut two 2¼" strips; subcut four 2¼" x 14½" strips.
- Cut four 2½" strips. Sew together end to end; press. Cut two 2½" x 70½" strips.

H. 23113 S: Yellow Tonal Print

- Cut one 4" strip.

I. 23114 A: Ecru Tonal Print

- Cut three 4" strips. Cut one strip into two 4" x 7½" rectangles.
- Cut two 3½" strips; subcut four 3½" x 14½" strips.
- Cut four 3¼" strips. Sew together end to end; press. Cut two 3¼" x 70½" strips.

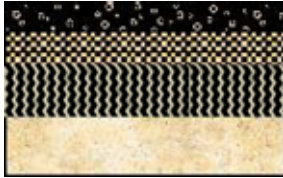
J. 23114 R: Red Tonal Print

- Cut four 4" squares.

Construction:

1. Sew one (D) 1½" x 21½" to both the top and bottom of the panel. Press toward the strips.

2. Sew these following 14½" strips in order as shown in quilt image: (E) 2"; (G) 2 1/4"; (F) 3" and (I) 3½". Press toward black dot (E) strip. Repeat to make four sets.



Make 4

3. Sew one (E) 4" square to each end of one (I) 4" x 7½" rectangle. Press toward the black (E) squares. Repeat to make two units.



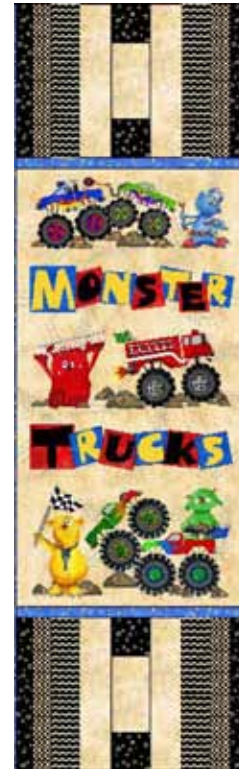
Make 2

4. Sew one strip set from step 2 to each side of one unit from step 3. Black dot (E) strips should be on the outside edges.



Make 2

5. Sew one unit from step 4 to both the top and bottom of the panel unit. Press toward the panel unit.



6. Sew these following 70½" strips in order as shown in quilt image: (I) 3¼"; (F) 3"; (G) 2½"; (E) 2" and (D) 2". Press seams toward blue dot (D) strip. Repeat to make two sets.



Make 2

7. Sew one strip set from step 6 to each side of the panel unit with ecru (I) strips on the outside edges.



11. Sew one (D) 1½" x 70½" strip to both sides of quilt. Sew one (D) 1½" x 51" strip to the top and bottom. Press all seams toward the blue (D) strips.
12. Sew one (B) 6" x 72½" strip to both sides of quilt. Sew one (B) 6" x 62" strip to the top and bottom. Press all seams toward the monster truck print (B) strips.

Finishing:

1. Layer quilt top with batting and prepared backing. Quilt as desired.
2. Trim batting and backing even with quilt top.
3. Prepare binding with black (E) 2½" strips. Sew to quilt using your preferred method.

8. Sew the following 4" strips in order to create a strip set: (D), (I), (H), (E), and (I). Press seams toward the blue (D) strip. Crosscut strip set into six 4" segments. From remainder of strip set, release seam between (D) and (I) approximately 10" and remove blue (D) strip; press strip. Cut two 4" (D) squares.



Make 6



Cut 2

9. Join three strip set units from step 8 with two 4" (C) squares, two 4" (J) squares and one 4" (D) square as shown. Press seams toward red squares. Repeat to make two strip units.



Make 2

10. Sew one strip unit from step 9 to both sides of quilt center. The red tonal (J) squares should be at the top on both sides. Press seams toward the ecru (I) strips.

While all possible care has been taken to ensure the accuracy of this pattern, we are not responsible for printing errors or the way in which individual work varies.