

Paradise

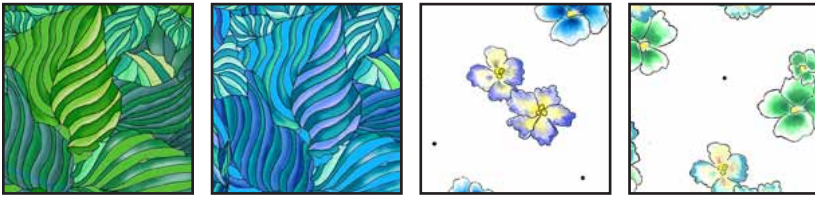
Susie M. Robbins



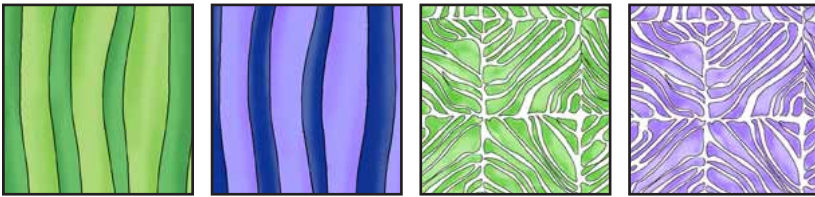
Designed By: Susie M. Robbins for Peddlers of Danville
Finished Quilt Size: 42½" x 50½"
Skill Level: Advanced Intermediate



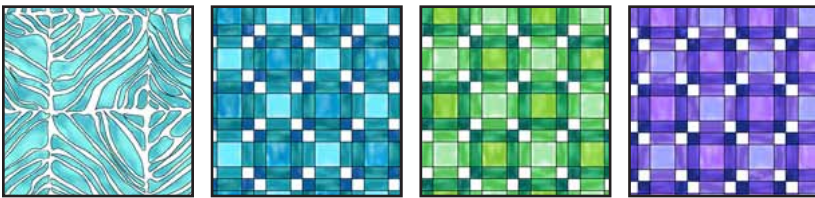
23151 Z 23152 B
(Inc. Binding) 23153 V 23153 Y



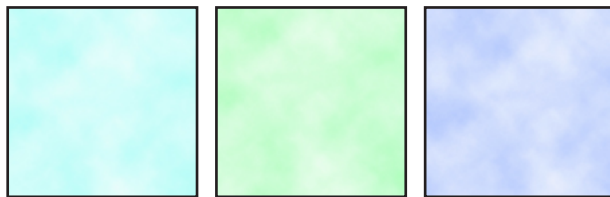
23154 G 23154 Y 23155 ZB 23155 ZG



23156 G 23156 V 23157 G 23157 L



23157 Q 23158 B 23158 G 23158 V



23159 B 23159 H 23159 L

FABRIC REQUIREMENTS	
Design: Light	Yards
23151 Z	1½
23152 B (Inc. Binding)	¾
23153 V	<i>Fat</i> ¼
23153 Y	<i>Fat</i> ¼
23154 G	½
23154 Y	<i>Fat</i> ⅛
23155 ZB	<i>Fat</i> ¼
23155 ZG	<i>Fat</i> ¼
23156 G	<i>Fat</i> ⅛
23156 V	<i>Fat</i> ¼
23157 G	⅜
23157 L	<i>Fat</i> ⅛
23157 Q	<i>Fat</i> ⅛
23158 B	<i>Fat</i> ⅛
23158 G	<i>Fat</i> ⅛
23158 V	<i>Fat</i> ⅛
23159 B	<i>Fat</i> ⅛
23159 H	⅜
23159 L	<i>Fat</i> ¼
Backing of choice	1½*
*If fabric is 44" or wider; if fabric is <44" wide, need 3 yards	

Designer Notes:

- This project is a medallion quilt, featuring six Pieced Star blocks and four borders.
- This project encourages the quilter to design their own Pieced Stars (center medallion) and Diamonds-in-a-Half Square blocks (Border #2).
- Appendix A presents the placement of all fabrics as shown on the cover. The gray-shaded areas are the blocks that present opportunities for your own creative design. Appendix B is the cutting requirements for all pieces except the borders, which are given under the heading Cutting Directions. Pieces in the Directions, Appendix A, and Appendix B are referred to by Number 1–19 (see Fabric Requirements).
- In order to accumulate enough triangles to allow for designing your unique quilt top, the designer suggests cutting a $2\frac{7}{8}$ " strip of fabric from each of the fabrics (18 different fabrics) EXCEPT light green tonal (fabric 18, SKU 23159-H) before beginning the remaining cutting directions.
- It is important to square up each sewn unit to the size given before proceeding to the next step.

Cutting Directions:

Note: Cut all strips horizontally from selvage to selvage, including fat quarters and fat eighths.

From all fabrics EXCEPT light green tonal (fabric 18; SKU 23159-H), cut:

- One $2\frac{7}{8}$ " strip into $2\frac{7}{8}$ " squares; recut each square into half-square triangles. Reserve 192 $2\frac{7}{8}$ " half-square triangles for six Center Medallion Pieced Stars and 224 $2\frac{7}{8}$ " half-square triangles for pieced Border #2. See Appendix B for exact cutting requirements of these triangles.

From white large floral (fabric 1; SKU 23151-Z), cut:

- One $2\frac{1}{2}$ " strip; recut into four $2\frac{1}{2}$ " squares (Border #1)
- Four $4\frac{1}{2}$ " x $42\frac{1}{2}$ " pieces (Border #4).

From dark large floral print (fabric 2, SKU 23152-B), cut:

- One $2\frac{1}{2}$ " strip into four $2\frac{1}{2}$ " x $2\frac{1}{2}$ " squares (Border #2)
- Five $2\frac{1}{2}$ " strips (Binding)

From leaf print with violet background (fabric 4, SKU 23153-Y), cut:

- Two $1\frac{7}{8}$ " x 22" strips into sixteen $1\frac{7}{8}$ " x $1\frac{7}{8}$ " squares; recut into thirty-two $1\frac{7}{8}$ " half-square triangles (Border #2)

From dark green print (fabric 5; SKU 23154-G), cut:

- One $1\frac{1}{2}$ " strips into sixteen $1\frac{1}{2}$ " x $1\frac{1}{2}$ " squares (Border #2)
- One $3\frac{1}{4}$ " strip into four $3\frac{1}{4}$ " x $3\frac{1}{4}$ " squares; recut into sixteen quarter-square triangles (Border #2)
- Two $1\frac{1}{2}$ " x $40\frac{1}{2}$ " pieces (Border #3)
- Two $1\frac{1}{2}$ " x $34\frac{1}{2}$ " pieces (Border #3)

From green checkered fabric (fabric 11; SKU 23157-G), cut:

- Four $2\frac{1}{2}$ " strips; recut into two $2\frac{1}{2}$ " x $28\frac{1}{2}$ " pieces (Border #2)
- Two $2\frac{1}{2}$ " x $20\frac{1}{2}$ " pieces (Border #2)
- Four $2\frac{1}{2}$ " squares (Border #2)

From light green tonal fabric (fabric 18; SKU 23159-H), cut:

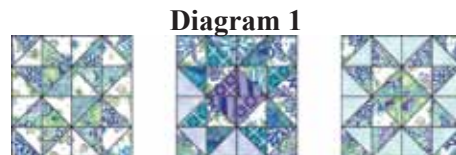
- Two $2\frac{1}{2}$ " x $24\frac{1}{2}$ " pieces (Border #1)
- Two $2\frac{1}{2}$ " x $16\frac{1}{2}$ " pieces (Border #1)

Directions:

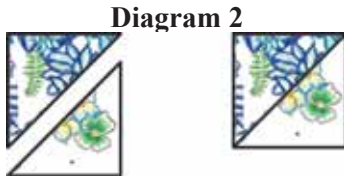
Note: Use a $\frac{1}{4}$ " seam allowance throughout. Sew all pieces with right sides together and raw edges even, using matching thread. Press seams as indicated.

8" Pieced Star Blocks Assembly (make 6 assorted)

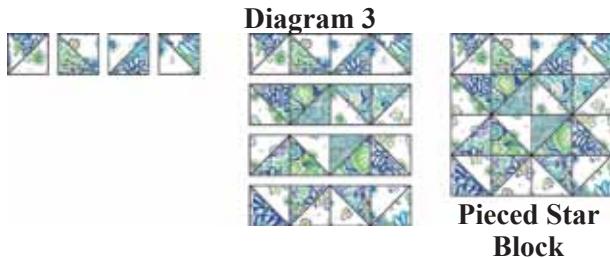
1. Using the quilt top image for inspiration (or Appendix A), layout the $2\frac{7}{8}$ " triangles to create six star blocks (Hint: Dark fabrics will make the star tips more prominent against a background of lighter fabrics). Designer suggests refraining from use of triangles from light green tonal (fabric 18; SKU 23159-H) to avoid Border 1 from merging with a star background. See Diagram 1 for star block variations.



2. Sew two triangles together to create a square unit. Press seam toward the darker fabric. The unit should measure $2\frac{1}{2}$ " x $2\frac{1}{2}$ ". See Diagram 2. Make a total of 16 units for each star block.



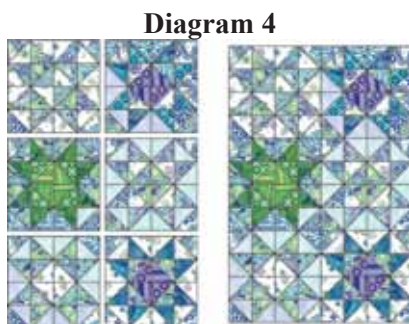
3. Noting orientation and placement in Diagram 3, sew four units together to create a row. Press seams in opposing directions. The row unit should measure $2\frac{1}{2}$ " x $8\frac{1}{2}$ ". Make a total of four rows.



4. Stitch the four rows together, matching all seams, to complete the Pieced Star block. Press row seams in opposing directions. The block should measure $8\frac{1}{2}$ " x $8\frac{1}{2}$ ".
5. Repeat steps 2–4 to make a total of six assorted Pieced Star blocks.

Center Medallion Assembly

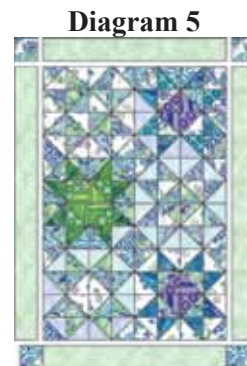
1. Sew the Pieced Star Blocks into three horizontal rows of two blocks each. Press seams in opposing directions. See Diagram 4.



2. Stitch the rows together, matching all seams. Press row seams in opposing directions. The quilt center should measure $16\frac{1}{2}$ " x $24\frac{1}{2}$ ".

Border #1

1. Side borders. Sew one $2\frac{1}{2}$ " x $24\frac{1}{2}$ " light green tonal (fabric 18; SKU 23159-H) strip to each long side of the quilt center. Press seams towards the border.
2. Top/Bottom border. Sew one $2\frac{1}{2}$ " x $2\frac{1}{2}$ " main floral (fabric 1; SKU 23151-Z) square to each end of a $2\frac{1}{2}$ " x $16\frac{1}{2}$ " light green tonal (fabric 18; SKU 23159-H) strip. Press seams toward the green strip. See Diagram 5.



3. Stitch top and bottom border to quilt center, matching all seams. Press seam toward the border. Top should measure $20\frac{1}{2}$ " x $28\frac{1}{2}$ ".

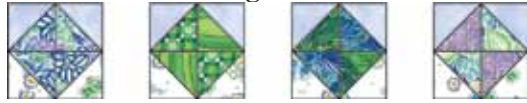
Border #2

Border 2 is comprised of a pieced Diamond-in-a-Square border and a green checked print (fabric 11; SKU 23157-G) border with Sawtooth Star cornerstone blocks. Make twenty Diamond-in-a-Square blocks and four Sawtooth Star blocks.

Diamond-in-a-Square Block (make 20 assorted)

1. Using the quilt top image for inspiration, layout $2\frac{7}{8}$ " triangles to create the Diamond-in-a-Square block (Hint: Medium- and dark-value fabrics will make the diamonds more prominent against the background of lighter fabrics). Three fabric placements remain the same in each block: lavender tonal (fabric 19; SKU 23159-L), white small print A (fabric 7, SKU 23155-ZB) and white small print B (fabric 8, SKU 23155-ZG). Two additional fabrics (A and B, choice of quilter) create the center diamond. See Diagram 6 for block variations.

Diagram 6



2. Sew a lavender tonal triangle (fabric 19, SKU 23159-L) to a fabric A triangle. Sew another lavender tonal triangle to a fabric B triangle. Sew a white print A (fabric 7, SKU 23155-ZB) triangle to a fabric A triangle. Sew a white print B (fabric 8, SKU 23155-ZG) triangle to a fabric B triangle. Press seams toward darker fabric. These four units should each measure $2\frac{1}{2}$ " x $2\frac{1}{2}$ " .
3. Noting orientation and placement in Diagram 7, sew four units together into two rows of two units. Press seams in opposing directions.
4. Stitch the rows together, matching all seams, to complete the Diamond-in-a-Square block. The block should measure $4\frac{1}{2}$ " x $4\frac{1}{2}$ ".

Diagram 7

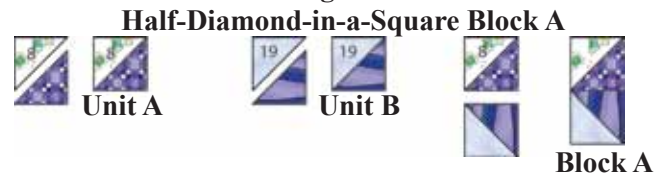


5. Repeat steps 1–4 to make a total of twenty assorted blocks.

Half-Diamond-in-a-Square Block A (make 4 alike)

1. Sew a $2\frac{7}{8}$ " white small floral print (fabric 8; SKU 23155-ZG) triangle to a $2\frac{7}{8}$ " violet geometric print (fabric 16, SKU 23158-V) triangle. Press seam toward violet triangle. The unit should measure $2\frac{1}{2}$ " x $2\frac{1}{2}$ ". Make a total of four units (Unit A).
2. Sew a $2\frac{7}{8}$ " lavender tonal (fabric 19, SKU 23159-L) triangle to a $2\frac{7}{8}$ " violet stripe (fabric 10, SKU 23156-V) triangle. Press seam toward violet triangle. The unit should measure $2\frac{1}{2}$ " x $2\frac{1}{2}$ ". Make a total of four units (Unit B).
3. Noting orientation and placement of fabrics in Diagram 8, sew unit A to unit B. Press seam toward stripe fabric. Resulting Block A should measure $2\frac{1}{2}$ " x $4\frac{1}{2}$ ". Make a total of four blocks (Block A).

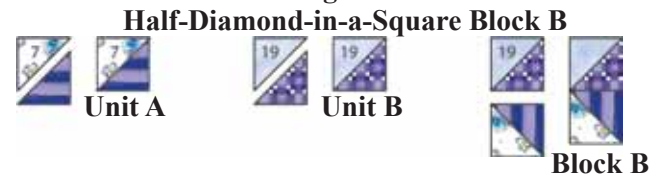
Diagram 8



Half-Diamond-in-a-Square Block B (make 4 alike)

1. Sew a $2\frac{7}{8}$ " lavender tonal (fabric 19, SKU 23159-L) triangle to a $2\frac{7}{8}$ " violet geometric print (fabric 16, SKU 23158-V) triangle. Press seam toward violet triangle. Unit should measure $2\frac{1}{2}$ " x $2\frac{1}{2}$ ". Make a total of four units (Unit A).
2. Sew a $2\frac{7}{8}$ " white small floral print (fabric 7, fabric SKU 23155-ZB) triangle to a $2\frac{7}{8}$ " violet stripe (fabric 10, SKU 23156-V) triangle. Press seam toward violet triangle. Unit should measure $2\frac{1}{2}$ " x $2\frac{1}{2}$ ". Make a total of four units (Unit B).
3. Noting orientation and placement of fabrics in Diagram 9, sew unit A to unit B. Press seam toward stripe fabric. Resulting Block B should measure $2\frac{1}{2}$ " x $4\frac{1}{2}$ ". Make a total of four blocks (Block B).

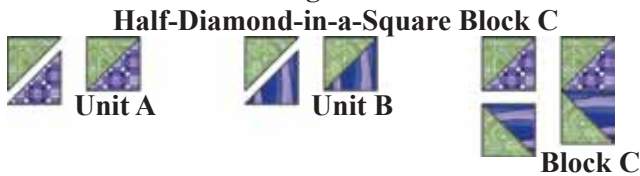
Diagram 9



Half-Diamond-in-a-Square Block C (make 8 alike)

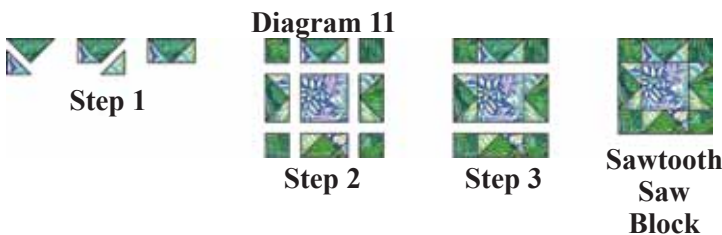
1. Sew a $2\frac{7}{8}$ " green checked print (fabric 11, SKU 23157-G) triangle to a $2\frac{7}{8}$ " violet stripe (fabric 10, SKU 23156-V) triangle. Press seam toward green triangle. Unit should measure $2\frac{1}{2}$ " x $2\frac{1}{2}$ ". Make a total of eight units (Unit A).
2. Sew a $2\frac{7}{8}$ " green checked print (fabric 11, SKU 23157-G) triangle to a $2\frac{7}{8}$ " violet geometric print (fabric 16, SKU 23158-V) triangle. Press seam toward green triangle. Unit should measure $2\frac{1}{2}$ " x $2\frac{1}{2}$ ". Make a total of eight units (Unit B).
3. Noting orientation and placement of fabrics in Diagram 10, sew unit A to unit B. Press seam toward striped fabric. Resulting Block C should measure $2\frac{1}{2}$ " x $4\frac{1}{2}$ ". Make a total of eight blocks (Block C).

Diagram 10



Sawtooth Star Block (make 4 alike)

1. Noting orientation and placement of fabrics in Diagram 11, sew a 1 $\frac{1}{8}$ " half-square triangle (fabric 4, SKU 23153-Y) to a 3 $\frac{1}{4}$ " quarter-square triangle (fabric 5, SKU 23154-G). Press seam toward half-square triangle. Sew another 1 $\frac{1}{8}$ " half-square triangle (fabric 4, SKU 23153-Y) to opposite side of unit. Press seam as for first side. Unit should measure 1 $\frac{1}{2}$ " x 2 $\frac{1}{2}$ ". Make a total of four Flying Geese units.
2. Row 1 and 3: Noting orientation and placement of fabrics in Diagram 11, sew a 1 $\frac{1}{2}$ " x 1 $\frac{1}{2}$ " square to each end of a Flying Geese unit. Row should measure 1 $\frac{1}{2}$ " x 4 $\frac{1}{2}$ ". Press seams towards squares.
3. Row 2: Sew a Flying Geese unit to opposing sides of a 2 $\frac{1}{2}$ " x 2 $\frac{1}{2}$ " (fabric 2, SKU 23152-B) square. Row should measure 2 $\frac{1}{2}$ " x 4 $\frac{1}{2}$ ". Press seams toward square.
4. Stitch the three rows together, matching all seams, to complete the Sawtooth Star Block. Block should measure 4 $\frac{1}{2}$ " x 4 $\frac{1}{2}$ ".
5. Make a total of four like blocks.



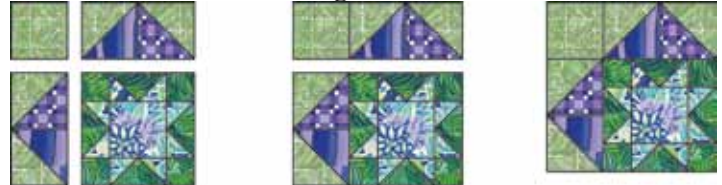
Cornerstone Units (make 4 alike)

Noting orientation and placement of fabrics in Diagram 12:

1. Row 1: Sew a 2 $\frac{1}{2}$ " x 2 $\frac{1}{2}$ " green checked print (fabric 11, SKU 23157-G) square to a Half-Square-in-a-Diamond Unit C. Press seam to square.
2. Row 2: Sew a Unit C to one side of a Sawtooth Star Block. Press seam toward star block.

3. Sew rows together, matching seams. Cornerstone unit should measure 6 $\frac{1}{2}$ " x 6 $\frac{1}{2}$ ".

Diagram 12

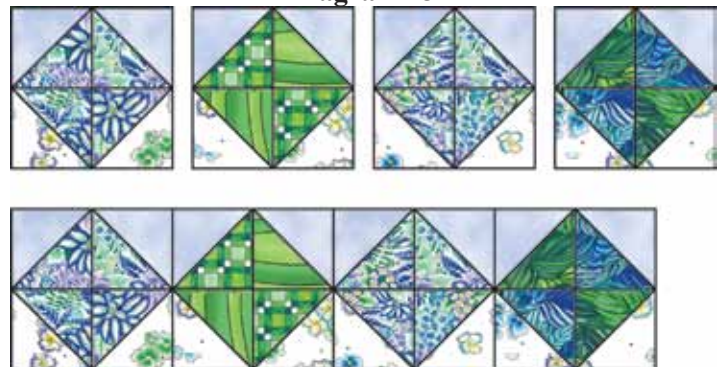


4. Make a total of four like cornerstone units.

Pieced Border Assembly

1. With remaining 2 $\frac{7}{8}$ " triangles, layout the placement of the Diamond-in-Square blocks for each side, top, and bottom borders.
2. Noting orientation and placement in Diagram 13, sew four Diamond-in-a-Square blocks together to make one long strip, matching seams. Make a total of two 4-block strips.

Diagram 13



3. Sew six Diamond-in-a-Square blocks together to make one long strip, matching seams. Make a total of two 6-block strips.
4. Noting orientation and placement in Diagram 14, sew a Half-Diamond-in-a-Square Block A and B to each end of each border. Press all seams in the same direction.

Diagram 14

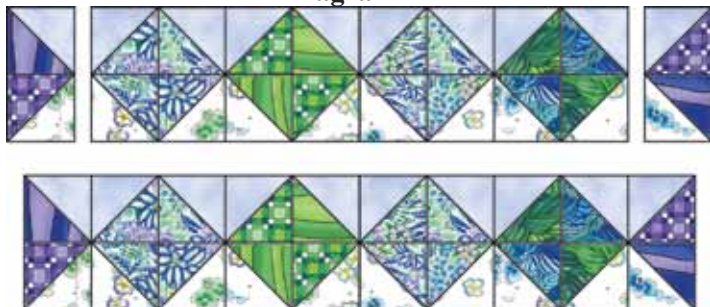


Diagram 16



5. Side Borders: Noting placement and orientation of seam (lavender tonal triangles seamed to green checked print), stitch a $2\frac{1}{2}$ " x $28\frac{1}{2}$ " green checked print (fabric 11, SKU 23157-G) strip to long edge of each 6-block side border. Press seam toward green border.

6. Top/Bottom Borders: Repeat step 5 for each 4-block border using the $2\frac{1}{2}$ " x $20\frac{1}{2}$ " green checked print (fabric 11, SKU 23157-G) strip .

7. Noting placement in Diagram 15 and matching seams, sew each side border to the quilt center. Press seam toward the quilt center.

Diagram 15



2. Sew top and bottom borders to quilt center, matching all seams. Press seams toward quilt center.

3. Top should now measure $32\frac{1}{2}$ " x $40\frac{1}{2}$ ".

Border #3

1. Sew a $1\frac{1}{2}$ " x $40\frac{1}{2}$ " dark green print (fabric 5, SKU 23154-G) strip to each long side of the quilt center and a $1\frac{1}{2}$ " x $34\frac{1}{2}$ " dark green print strip to each of the other sides. Press seams away from quilt center after adding each strip.

2. Top should now measure $34\frac{1}{2}$ " x $42\frac{1}{2}$ ".

Border #4

1. Sew a $4\frac{1}{2}$ " x $42\frac{1}{2}$ " white large floral print (fabric 1, SKU 23151-Z) strip to each long side of the quilt center and a $4\frac{1}{2}$ " x $42\frac{1}{2}$ " white large floral print (fabric 1, SKU 23151-Z) strip to each of the other sides. Press seams away from the quilt center after adding each strip.

2. Top should now measure $42\frac{1}{2}$ " x $50\frac{1}{2}$ ".

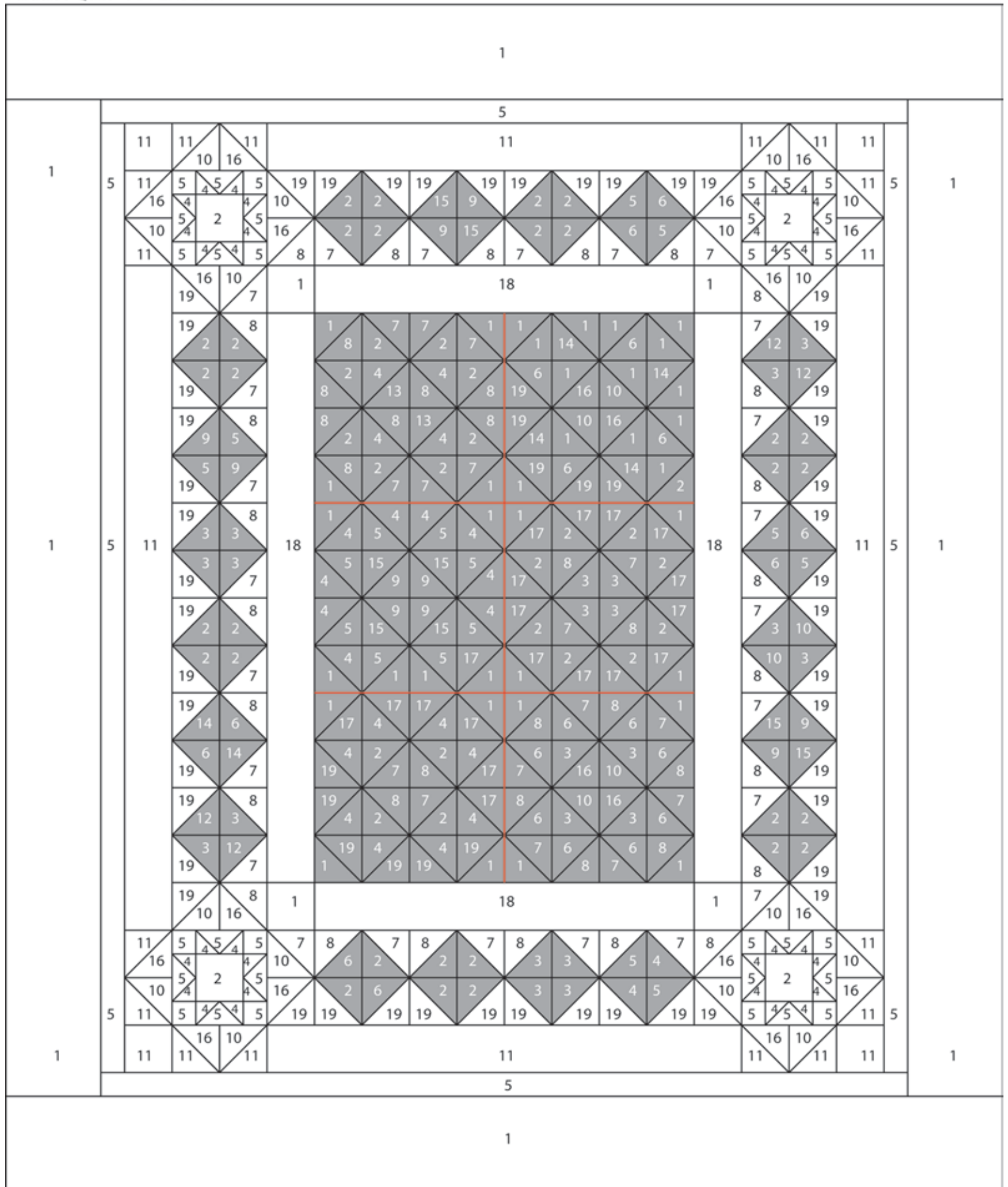
Quilt Assembly

1. Layer the quilt top right side up on top of the batting and the wrong side of the backing. Baste the layers together and quilt as desired. Trim the backing and batting even with the top.

2. Bind using the five $2\frac{1}{2}$ " dark large floral print (fabric 2, SKU 23152-B) strips.

Top/Bottom Border #2 Assembly

1. Noting orientation and placement in Diagram 16, sew a cornerstone unit to each end of the remaining two 4-block borders.



Paradise Quilt

APPENDIX B

Fabric #	Fabric SKU	Fabric Desc	Placement	# of 2 $\frac{7}{8}$ " HST	# of 2 $\frac{7}{8}$ " sqs
1	23151-Z	white large floral	Center Medallion	36	18
2	23152-B	dark large floral	Center Medallion	21	11
3	23153-V	leaf print purple	Center Medallion	8	4
4	23153-Y	leaf print dk blue	Center Medallion	21	11
5	23154-G	dark green print	Center Medallion	8	4
6	23154-Y	dark blue print	Center Medallion	12	6
7	23155-ZB	small white print A	Center Medallion	16	8
8	23155-ZG	small white print B	Center Medallion	18	9
9	23156-G	green stripe	Center Medallion	4	2
10	23156-V	violet stripe	Center Medallion	4	2
13	23157-Q	blue checked print	Center Medallion	2	1
14	23158-B	blue geometric print	Center Medallion	4	2
15	23158-G	green geometric print	Center Medallion	4	2
16	23158-V	violet geometric print	Center Medallion	4	2
17	23159-B	blue tonal	Center Medallion	19	10
19	23159-L	lavender tonal	Center Medallion	11	6
TOTALS				192	98

2	23152-B	dark large floral	Border #2	30	15
3	23153-V	leaf print purple	Border #2	14	7
4	23153-Y	leaf print dk blue	Border #2	2	1
5	23154-G	dark green print	Border #2	8	4
6	23154-Y	dark blue print	Border #2	8	4
7	23155-ZB	small white print A	Border #2	24	12
8	23155-ZG	small white print B	Border #2	24	12
9	23156-G	green stripe	Border #2	6	3
10	23156-V	violet stripe	Border #2	18	9
11	23157-G	green checked print	Border #2	16	8
12	23157-L	lavender checked print	Border #2	4	2
14	23158-B	blue geometric print	Border #2	2	1
15	23158-G	green geometric print	Border #2	4	2
16	23158-V	violet geometric print	Border #2	16	8
19	23159-L	lavender tonal	Border #2	48	24
TOTALS				224	112