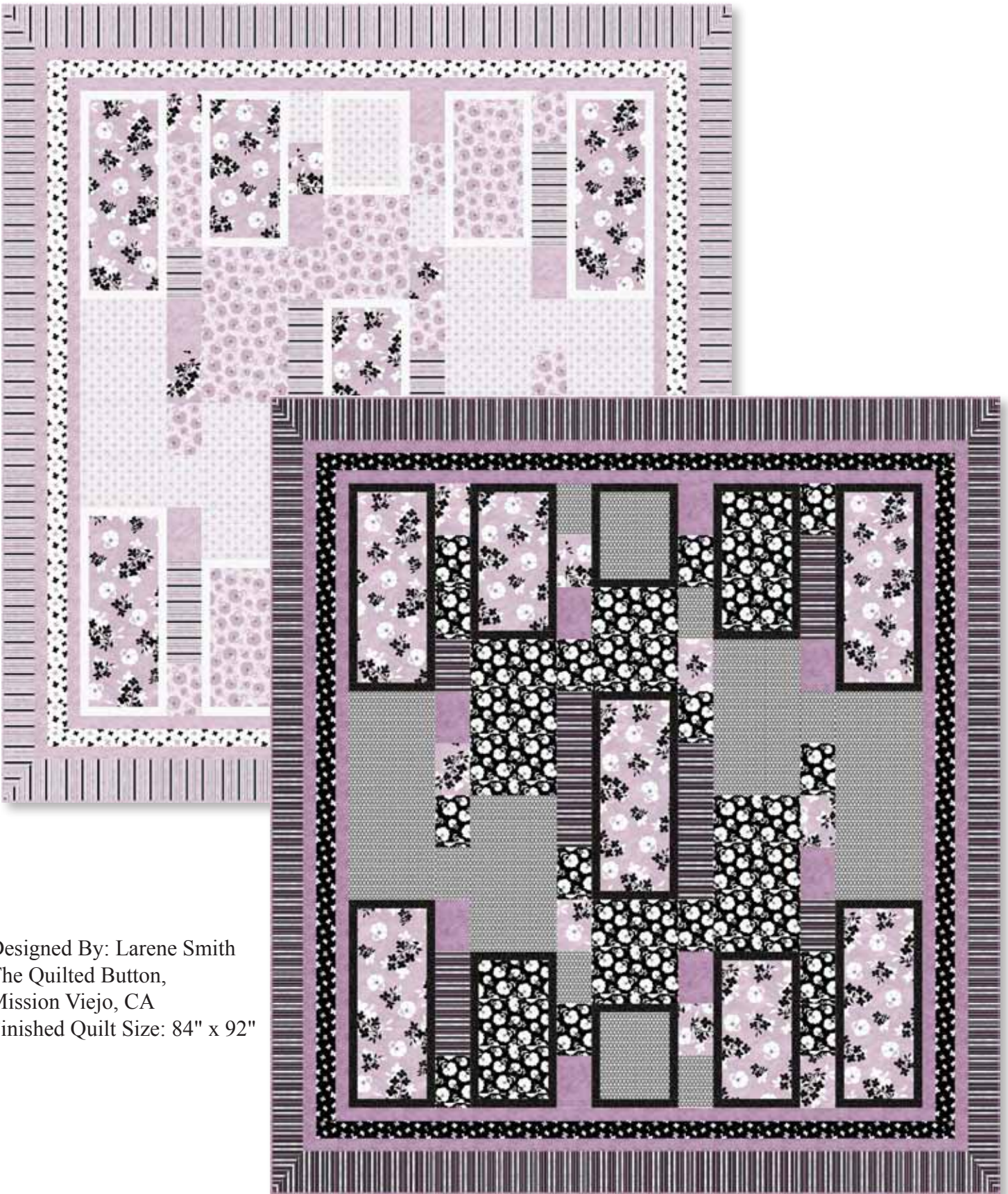




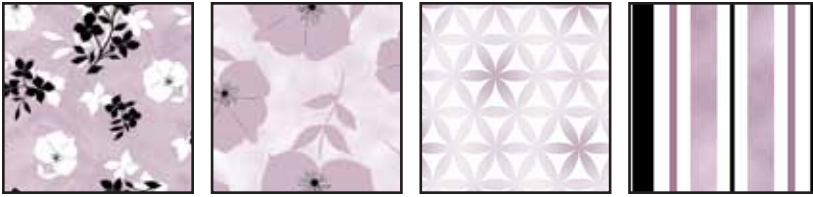
Twilight

Kate Knight



Designed By: Larene Smith
The Quilted Button,
Mission Viejo, CA
Finished Quilt Size: 84" x 92"

Light:

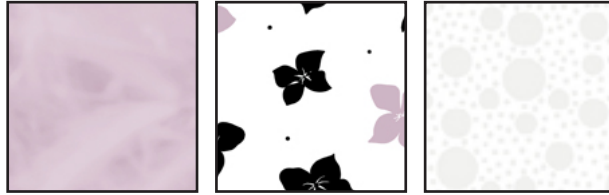


23212 L

23213 L

23215 ZL

23217 Z



23216 L

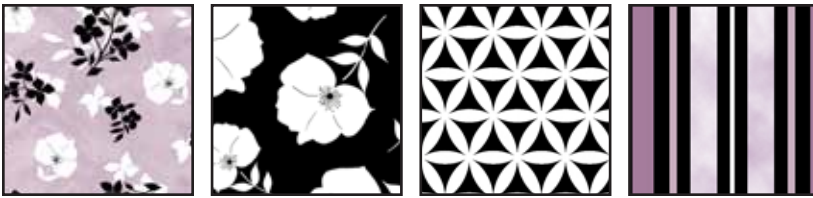
(Inc. Binding)

23214 Z

21521 Z

FABRIC REQUIREMENTS	
Design: Light	Yards
23212 L	1 $\frac{3}{8}$
23213 L	1 $\frac{1}{4}$
23215 ZL	1 $\frac{1}{3}$
23217 Z	1 $\frac{3}{4}$
23216 L (Inc. Binding)	2
23214 Z	$\frac{3}{4}$
21521 Z	1 $\frac{1}{8}$
Backing	7 $\frac{1}{2}$
Batting 90" x 98"	

Dark:



23212 L

23213 J

23215 J

23217 J



23216 V

(Inc. Binding)

23214 J

21521 J

FABRIC REQUIREMENTS	
Design: Dark	Yards
23212 L	1 $\frac{3}{8}$
23213 J	1 $\frac{1}{4}$
23215 J	1 $\frac{1}{3}$
23217 J	1 $\frac{3}{4}$
23216 V (Inc. Binding)	2
23214 J	$\frac{3}{4}$
21521 J	1 $\frac{1}{8}$
Backing	7 $\frac{1}{2}$
Batting 90" x 98"	

General Information:

- ▶ All seams are sewn with a $\frac{1}{4}$ " seam allowance.
- ▶ **WOF** = Width of Fabric is from Selvage to Selvage.
- ▶ Label all pieces when cut for less confusion.
- ▶ This quilt is sewn together in COLUMNS.

Special Notions:

Rotary Cutter, Mat, Rulers, Straight Pins, Sewing machine, thread to sew your seams, and Sulky® Poly Deco™ 40wt. Thread #962-1193 for quilting.

Step 1: Cutting the Fabric:

1. Fabric A: 23212 L

- Cut (2) strips at 22 $\frac{1}{2}$ " x **WOF** – Sub-cut into (5) 22 $\frac{1}{2}$ " x 8 $\frac{1}{2}$ " rectangles

From the balance of the fabric:

- Cut (2) 16 $\frac{1}{2}$ " x 8 $\frac{1}{2}$ " rectangles
- Cut (8) 4 $\frac{1}{2}$ " x 6 $\frac{1}{2}$ " rectangles

2. Fabric B: 23213 L / 23213 J

- Cut (1) strip at 18 $\frac{1}{2}$ " x **WOF** – Sub-cut into (2) 18 $\frac{1}{2}$ " x 10 $\frac{1}{2}$ " rectangles and (2) 16 $\frac{1}{2}$ " x 8-1/2" rectangles
- Cut (1) strip at 12 $\frac{1}{2}$ " x **WOF** – Sub-cut into (2) 12 $\frac{1}{2}$ " x 10 $\frac{1}{2}$ " rectangles and (2) 12 $\frac{1}{2}$ " x 4 $\frac{1}{2}$ " rectangles
- Cut (1) strip at 6 $\frac{1}{2}$ " x **WOF** and use the balance of the fabric from above to cut (10) 6 $\frac{1}{2}$ " x 4 $\frac{1}{2}$ " rectangles

3. Fabric C: 23215 ZL / 23215 J

- Cut (2) strips at 10½" x **WOF** – Sub-cut into (2) 10½" x 24½" rectangles and (2) 8½" x 10½" rectangles.
- Cut (1) strip at 18½" x **WOF** – Sub-cut into (2) 18½" x 10½" rectangles and (6) 6½" x 4½" rectangles.

4. Fabric D: 23217 Z / 23217 J

- Cut (5) strips at 4" x **WOF** (Outer Border – SIDES)
- Cut (5) strips at 5¼" x **WOF** (Outer Border – TOP/ BOTTOM)
- Cut (2) strips at 4½" x **WOF** – Sub-cut into (2) 4½" x 18½" rectangles, (2) 4½" x 12½" rectangles, and (2) 4½" x 6½" rectangles.

5. Fabric E: 23216 L / 23216 V

- Cut (1) strip at 6½" x **WOF** – Sub-cut into (8) 6½" x 4½" rectangles
- Cut (17) strips at 2" x **WOF** (Border 1 and 3)
- Cut (9) strips at 2½" x **WOF** (Binding)

6. Fabric F: 23214 Z / 23214 J

- Cut (4) strips at 2¾" x **WOF** (Border 2 – SIDES)
- Cut (4) strips at 2½" x **WOF** (Border 2 – TOP/ BOTTOM)

7. Fabric G: 21521 Z / 21521 J

- Cut (1) strip at 10½" x **WOF** – Sub-cut into (22) 10½" x 1½" rectangles
- Cut (1) strip at 22½" x **WOF** – Sub-cut as follows:
- Cut (10) 22½" x 1½" rectangles
- Cut (8) 16½" x 1½" rectangles

Step 2 – Block A and B:

8. Sew (1) Fabric G 22½" x 1½" to each side of (1) Fabric A 22½" x 8½".
9. Sew (1) Fabric G 10½" x 1½" to the top and bottom to finish BLOCK A at 24½" x 10½" – Make (5).
10. Sew (1) Fabric G 16½" x 1½" to each side of (1) Fabric A 16½" x 8½".
11. Sew (1) Fabric G 10½" x 1½" to the top and bottom to finish BLOCK B at 18½" x 10½" – Make (2).

Block A & B



Step 3 – Block C:

12. Sew (1) Fabric G 16½" x 1½" to each side of (1) Fabric B 16½" x 8½".
13. Sew (1) Fabric G 10½" x 1½" to the top and bottom to finish BLOCK C at 18½" x 10½" – Make (2).

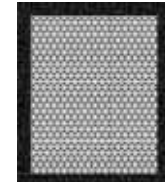
Block C



Step 4 – Block D:

14. Sew (1) Fabric G 10½" x 1½" to each side of (1) Fabric C 10½" x 8½".
15. Sew (1) Fabric G 10½" x 1½" to the top and bottom to finish BLOCK D at 12½" x 10½" – Make (2).

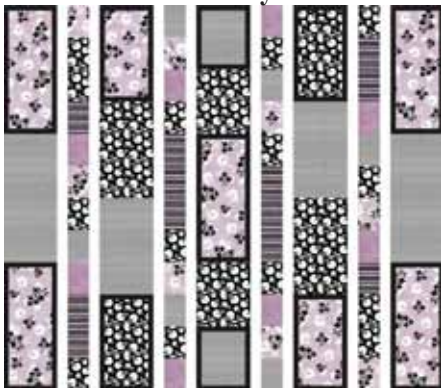
Block D



Step 5 – Sewing the Quilt Center:

- ▶ This quilt is sewn together in COLUMNS.
 - ▶ The ODD numbered columns are sewn together at the 10½" edge.
 - ▶ The EVEN numbered columns are sewn together at the 4½" edge.
 - ▶ The FABRIC is listed from TOP to BOTTOM and are sewn from LEFT to RIGHT.
 - ▶ Each column will be 10½" x 72½" OR 4½" x 72½".
 - ▶ Refer to the "CENTER LAYOUT" for a guide.
16. Column 1 and 9 – Block A, Fabric C 24½", Block A – Make (2).
 17. Column 2 and 8 – Fabric A 6½", Fabric B 12½", Fabric D 6½", Fabric E 6-1/2", Fabric A 6½", Fabric B 6½", Fabric C 6½", Fabric E 6½", Fabric D 12½", Fabric B 6½" – Make (2).
 18. Column 3 and 7 – Block B, Fabric B 18½", Fabric C 18½", Block C – Make (2).
 19. Column 4 and 6 – Fabric C 6½", Fabric A 6½", Fabric E 6½", Fabric B 6½", Fabric D 18½", Fabric B 6½", Fabric A 6½", Fabric C 6½", Fabric B 6½", Fabric E 6½" – Make (2).
 20. Column 5 (CENTER) – Block D, Fabric B 12½", Block A, Fabric B 12½", Block D.
 21. Sew the columns together to finish the quilt center at 66½" x 72½" (NOTE: Column 6, 7, 8, and 9 will flip).

Center Layout



Step 6 – Adding the Borders:

22. Sew the 2" strips of Fabric E together at the 2" edge then sub-cut into the following:
 - a. (2) 2" x 72½" rectangles – Border 1 Sides
 - b. (2) 2" x 69½" rectangles – Border 1 Top/Bottom
 - c. (2) 2" x 79½" rectangles – Border 3 Sides
 - d. (2) 2" x 77" rectangles – Border 3 Top/Bottom
23. Border 2 – SIDES – Sew Fabric F 2¾" strips together at the 2¾" edge then sub-cut into (2) 2¾" x 75½" rectangles.
24. Border 2 – TOP/BOTTOM – Sew Fabric F 2½" strips together at the 2½" edge then sub-cut into (2) 2½" x 74".
25. Outer Border – SIDES – Sew Fabric D 4" strips together at the 4" edge then sub-cut into (2) 4" x 82½".
26. Outer Border – TOP/BOTTOM – Sew Fabric D 5¼" strips together at the 5¼" edge then sub-cut into (2) 5¼" x 84".
27. Sew on one border at a time always sewing the SIDES first then the TOP/BOTTOM beginning with Border 1 to finish the quilt top at 84" x 92".

Step 8 – Finishing the Quilt:

28. Layer the backing, batting, and quilt top and quilt as desired.
29. Using the Fabric E 2½" strips sew on the binding to finish the quilt.

While all possible care has been taken to ensure the accuracy of this pattern, we are not responsible for printing errors or the way in which individual work varies.