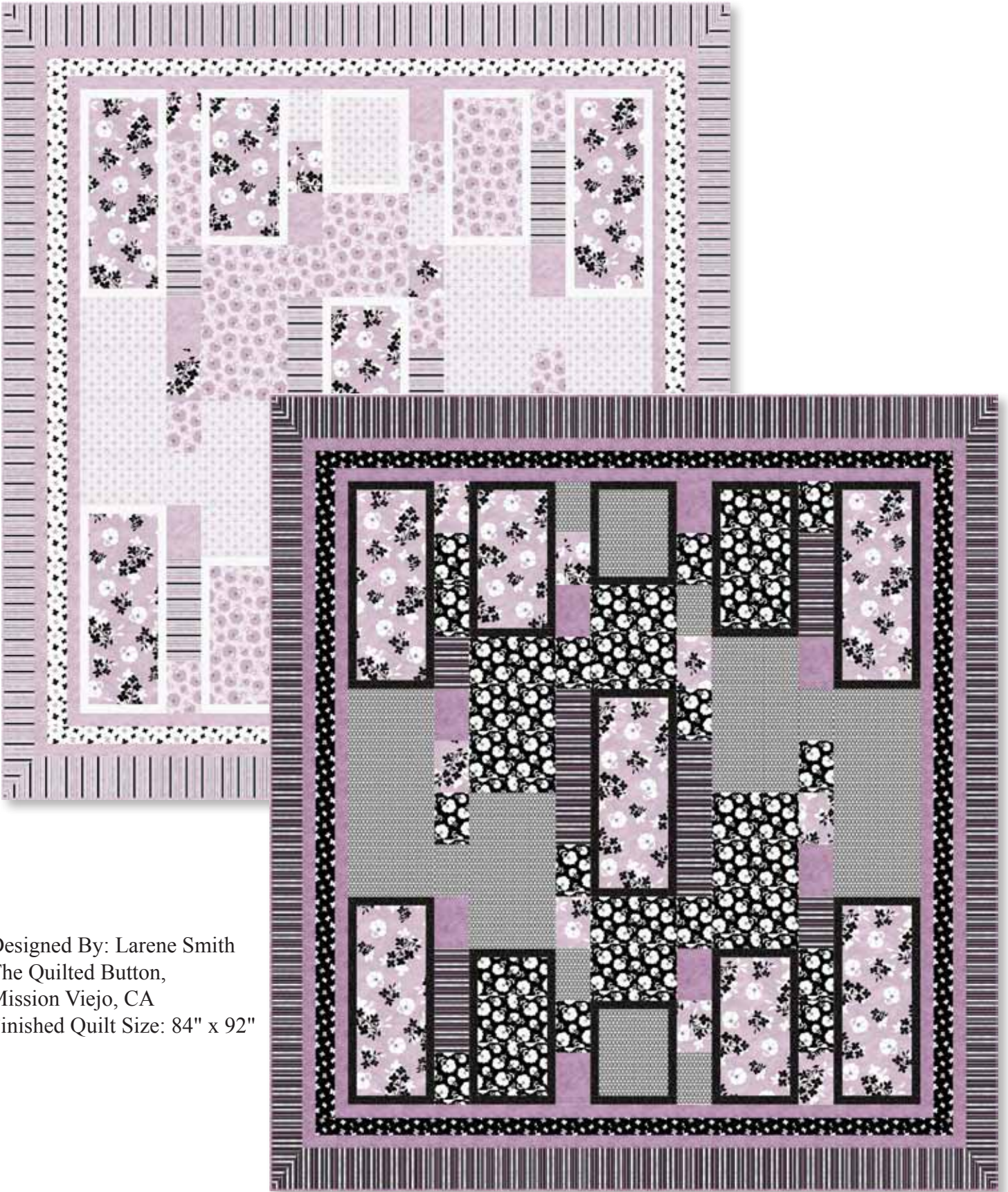




# Twilight

*Kate Knight*



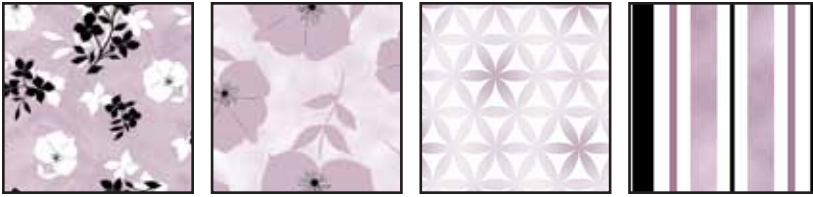
Designed By: Larene Smith  
The Quilted Button,  
Mission Viejo, CA  
Finished Quilt Size: 84" x 92"



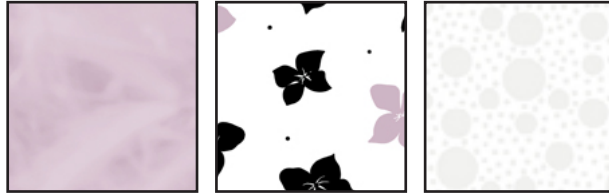
# Twilight

Kate Knight

## Light:



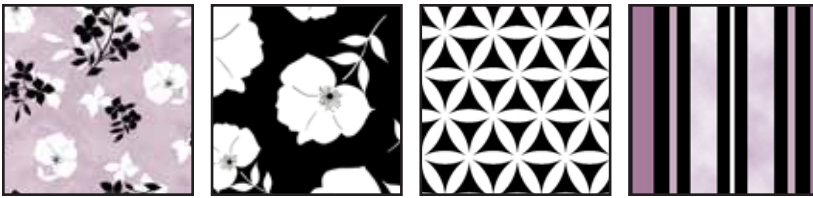
23212 L      23213 L      23215 ZL      23217 Z



23216 L  
(Inc. Binding)      23214 Z      21521 Z

FABRIC REQUIREMENTS	
Design: Light	Yards
23212 L	1 $\frac{3}{8}$
23213 L	1 $\frac{1}{4}$
23215 ZL	1 $\frac{1}{3}$
23217 Z	1 $\frac{3}{4}$
23216 L (Inc. Binding)	2
23214 Z	$\frac{3}{4}$
21521 Z	1 $\frac{1}{8}$
Backing	7 $\frac{1}{2}$
Batting 90" x 98"	

## Dark:



23212 L      23213 J      23215 J      23217 J



23216 V  
(Inc. Binding)      23214 J      21521 J

FABRIC REQUIREMENTS	
Design: Dark	Yards
23212 L	1 $\frac{3}{8}$
23213 J	1 $\frac{1}{4}$
23215 J	1 $\frac{1}{3}$
23217 J	1 $\frac{3}{4}$
23216 V (Inc. Binding)	2
23214 J	$\frac{3}{4}$
21521 J	1 $\frac{1}{8}$
Backing	7 $\frac{1}{2}$
Batting 90" x 98"	

### General Information:

- ▶ All seams are sewn with a  $\frac{1}{4}$ " seam allowance.
- ▶ **WOF** = Width of Fabric is from Selvage to Selvage.
- ▶ Label all pieces when cut for less confusion.
- ▶ This quilt is sewn together in COLUMNS.

### Special Notions:

Rotary Cutter, Mat, Rulers, Straight Pins, Sewing machine, thread to sew your seams, and Sulky® Poly Deco™ 40wt. Thread #962-1193 for quilting.

### Step 1: Cutting the Fabric:

#### 1. Fabric A: 23212 L

- Cut (2) strips at 22 $\frac{1}{2}$ " x **WOF** – Sub-cut into (5) 22 $\frac{1}{2}$ " x 8 $\frac{1}{2}$ " rectangles

*From the balance of the fabric:*

- Cut (2) 16 $\frac{1}{2}$ " x 8 $\frac{1}{2}$ " rectangles
- Cut (8) 4 $\frac{1}{2}$ " x 6 $\frac{1}{2}$ " rectangles

#### 2. Fabric B: 23213 L / 23213 J

- Cut (1) strip at 18 $\frac{1}{2}$ " x **WOF** – Sub-cut into (2) 18 $\frac{1}{2}$ " x 10 $\frac{1}{2}$ " rectangles and (2) 16 $\frac{1}{2}$ " x 8-1 $\frac{1}{2}$ " rectangles
- Cut (1) strip at 12 $\frac{1}{2}$ " x **WOF** – Sub-cut into (2) 12 $\frac{1}{2}$ " x 10 $\frac{1}{2}$ " rectangles and (2) 12 $\frac{1}{2}$ " x 4 $\frac{1}{2}$ " rectangles
- Cut (1) strip at 6 $\frac{1}{2}$ " x **WOF** and use the balance of the fabric from above to cut (10) 6 $\frac{1}{2}$ " x 4 $\frac{1}{2}$ " rectangles

### 3. Fabric C: 23215 ZL / 23215 J

- Cut (2) strips at 10½" x **WOF** – Sub-cut into (2) 10½" x 24½" rectangles and (2) 8½" x 10½" rectangles.
- Cut (1) strip at 18½" x **WOF** – Sub-cut into (2) 18½" x 10½" rectangles and (6) 6½" x 4½" rectangles.

### 4. Fabric D: 23217 Z / 23217 J

- Cut (5) strips at 4" x **WOF** (Outer Border – SIDES)
- Cut (5) strips at 5¼" x **WOF** (Outer Border – TOP/ BOTTOM)
- Cut (2) strips at 4½" x **WOF** – Sub-cut into (2) 4½" x 18½" rectangles, (2) 4½" x 12½" rectangles, and (2) 4½" x 6½" rectangles.

### 5. Fabric E: 23216 L / 23216 V

- Cut (1) strip at 6½" x **WOF** – Sub-cut into (8) 6½" x 4½" rectangles
- Cut (17) strips at 2" x **WOF** (Border 1 and 3)
- Cut (9) strips at 2½" x **WOF** (Binding)

### 6. Fabric F: 23214 Z / 23214 J

- Cut (4) strips at 2¾" x **WOF** (Border 2 – SIDES)
- Cut (4) strips at 2½" x **WOF** (Border 2 – TOP/ BOTTOM)

### 7. Fabric G: 21521 Z / 21521 J

- Cut (1) strip at 10½" x **WOF** – Sub-cut into (22) 10½" x 1½" rectangles
- Cut (1) strip at 22½" x **WOF** – Sub-cut as follows:
- Cut (10) 22½" x 1½" rectangles
- Cut (8) 16½" x 1½" rectangles

#### Step 2 – Block A and B:

8. Sew (1) Fabric G 22½" x 1½" to each side of (1) Fabric A 22½" x 8½".
9. Sew (1) Fabric G 10½" x 1½" to the top and bottom to finish BLOCK A at 24½" x 10½" – Make (5).
10. Sew (1) Fabric G 16½" x 1½" to each side of (1) Fabric A 16½" x 8½".
11. Sew (1) Fabric G 10½" x 1½" to the top and bottom to finish BLOCK B at 18½" x 10½" – Make (2).

#### Block A & B



#### Step 3 – Block C:

12. Sew (1) Fabric G 16½" x 1½" to each side of (1) Fabric B 16½" x 8½".
13. Sew (1) Fabric G 10½" x 1½" to the top and bottom to finish BLOCK C at 18½" x 10½" – Make (2).

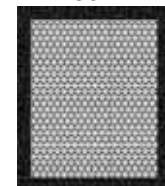
#### Block C



#### Step 4 – Block D:

14. Sew (1) Fabric G 10½" x 1½" to each side of (1) Fabric C 10½" x 8½".
15. Sew (1) Fabric G 10½" x 1½" to the top and bottom to finish BLOCK D at 12½" x 10½" – Make (2).

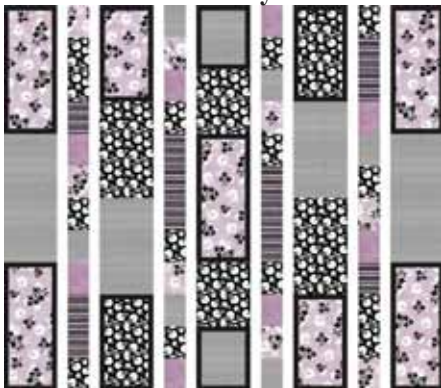
#### Block D



## Step 5 – Sewing the Quilt Center:

- ▶ This quilt is sewn together in COLUMNS.
  - ▶ The ODD numbered columns are sewn together at the 10½" edge.
  - ▶ The EVEN numbered columns are sewn together at the 4½" edge.
  - ▶ The FABRIC is listed from TOP to BOTTOM and are sewn from LEFT to RIGHT.
  - ▶ Each column will be 10½" x 72½" OR 4½" x 72½".
  - ▶ Refer to the "CENTER LAYOUT" for a guide.
16. Column 1 and 9 – Block A, Fabric C 24½", Block A – Make (2).
  17. Column 2 and 8 – Fabric A 6½", Fabric B 12½", Fabric D 6½", Fabric E 6-1/2", Fabric A 6½", Fabric B 6½", Fabric C 6½", Fabric E 6½", Fabric D 12½", Fabric B 6½" – Make (2).
  18. Column 3 and 7 – Block B, Fabric B 18½", Fabric C 18½", Block C – Make (2).
  19. Column 4 and 6 – Fabric C 6½", Fabric A 6½", Fabric E 6½", Fabric B 6½", Fabric D 18½", Fabric B 6½", Fabric A 6½", Fabric C 6½", Fabric B 6½", Fabric E 6½" – Make (2).
  20. Column 5 (CENTER) – Block D, Fabric B 12½", Block A, Fabric B 12½", Block D.
  21. Sew the columns together to finish the quilt center at 66½" x 72½" (NOTE: Column 6, 7, 8, and 9 will flip).

Center Layout



## Step 6 – Adding the Borders:

22. Sew the 2" strips of Fabric E together at the 2" edge then sub-cut into the following:
  - a. (2) 2" x 72½" rectangles – Border 1 Sides
  - b. (2) 2" x 69½" rectangles – Border 1 Top/Bottom
  - c. (2) 2" x 79½" rectangles – Border 3 Sides
  - d. (2) 2" x 77" rectangles – Border 3 Top/Bottom
23. Border 2 – SIDES – Sew Fabric F 2¾" strips together at the 2¾" edge then sub-cut into (2) 2¾" x 75½" rectangles.
24. Border 2 – TOP/BOTTOM – Sew Fabric F 2½" strips together at the 2½" edge then sub-cut into (2) 2½" x 74".
25. Outer Border – SIDES – Sew Fabric D 4" strips together at the 4" edge then sub-cut into (2) 4" x 82½".
26. Outer Border – TOP/BOTTOM – Sew Fabric D 5¼" strips together at the 5¼" edge then sub-cut into (2) 5¼" x 84".
27. Sew on one border at a time always sewing the SIDES first then the TOP/BOTTOM beginning with Border 1 to finish the quilt top at 84" x 92".

## Step 8 – Finishing the Quilt:

28. Layer the backing, batting, and quilt top and quilt as desired.
29. Using the Fabric E 2½" strips sew on the binding to finish the quilt.

*While all possible care has been taken to ensure the accuracy of this pattern, we are not responsible for printing errors or the way in which individual work varies.*