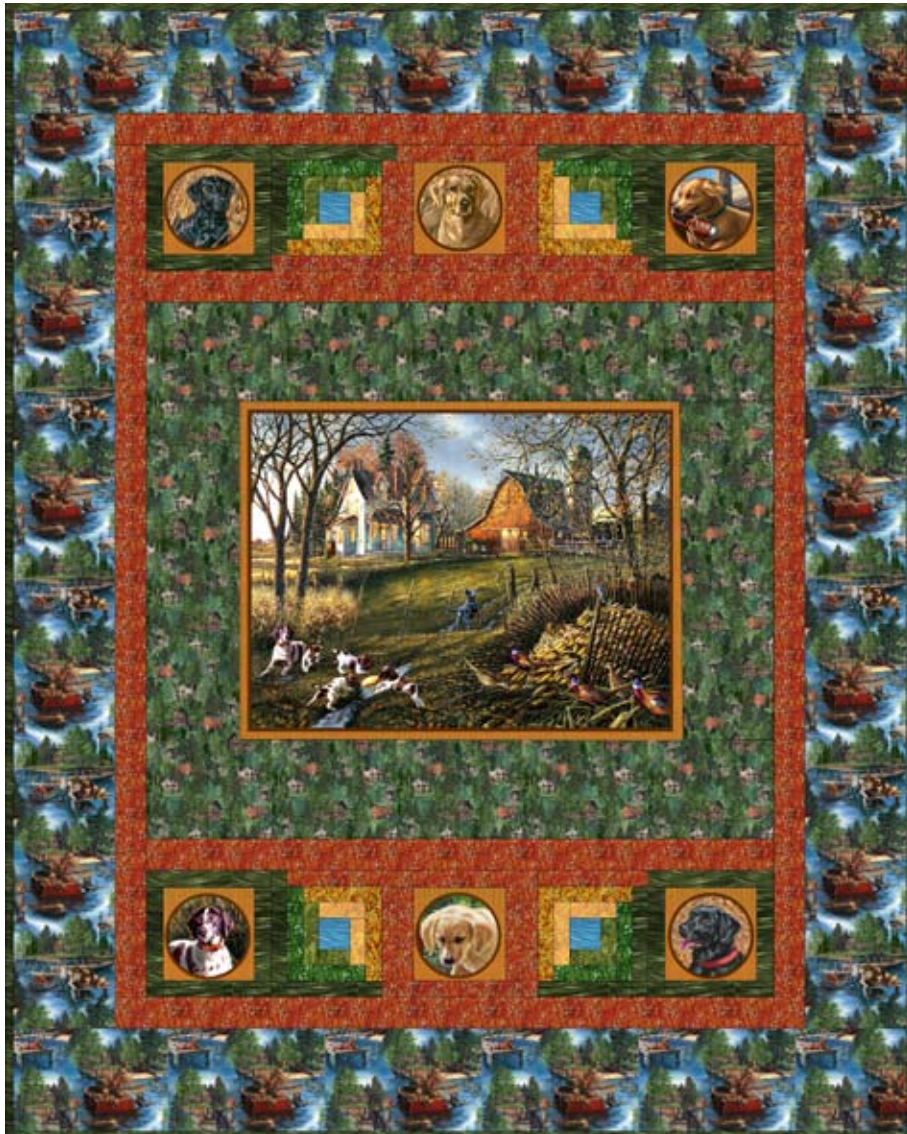
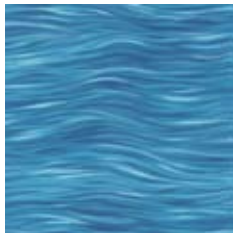


Country Canines

by James Meger



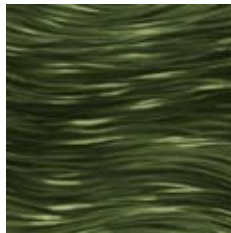
Approximate Size 56" x 72 1/2"



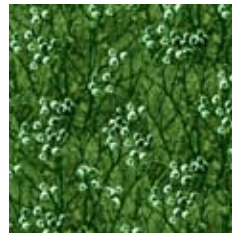
20579-B 1/8 yard



20574-G 3/4 yard



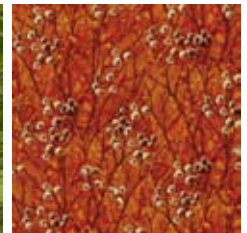
20579-F 3/4 yard



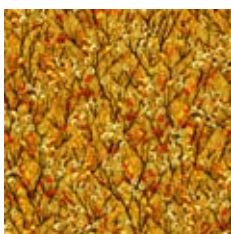
20575-G 1/8 yard



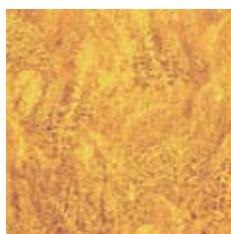
20576-G 1/8 yard



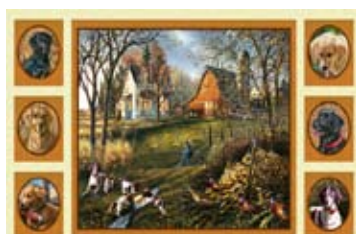
20575-T 3/4 yard



20575-S 1/8 yard



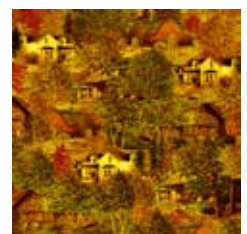
20576-S 1/8 yard



20571-T one panel



20573-B 1 1/2 yard



20574-S 4 1/2 yard

Country Canines

Beginner Quilting Skills

Quilt Designed by Vicki Niro

CUTTING: Label pieces

20571-T (panel print): Fussy Cut (6) dog faces $6\frac{1}{2}'' \times 6\frac{1}{2}''$

Fussy Cut center image $23\frac{3}{8}'' \times 27''$

20574-G (green foliage): Following the Selvage

Cut (3) $7\frac{1}{4}''$ strips. Sew short ends.

Subcut (1) $7\frac{1}{4}'' \times 33\frac{3}{4}''$ and (1) $7\frac{1}{4}'' \times 40\frac{1}{2}''$

Following Width of Fabric. Cut (3) $7\frac{1}{4}'' \times \text{WOF}$ (approx. 20'')

Sew short ends.

Subcut (1) $7\frac{1}{4}'' \times 30\frac{3}{8}''$, (1) $7\frac{1}{4}'' \times 23\frac{3}{8}''$

20579-F (green wave, dark): Cut (5) $1\frac{1}{2}'' \times \text{WOF}$

Subcut (8) $1\frac{1}{2}'' \times 8\frac{1}{2}''$, (8) $1\frac{1}{2}'' \times 6\frac{1}{2}''$, (4) $1\frac{1}{2}'' \times 7\frac{1}{2}''$

Cut (7) $2\frac{1}{2}'' \times \text{WOF}$ (binding)

20575-G (green cattail, medium): Cut (2) $1\frac{1}{2}'' \times \text{WOF}$

Subcut (4) $1\frac{1}{2}'' \times 6\frac{1}{2}''$, (4) $1\frac{1}{2}'' \times 4\frac{1}{2}''$

20576-G (green fish, light): Cut (1) $1\frac{1}{2}'' \times \text{WOF}$

Subcut (4) $1\frac{1}{2}'' \times 2\frac{1}{2}''$, (4) $1\frac{1}{2}'' \times 4\frac{1}{2}''$

20575-T (orange cattail, dark): Cut (3) $1\frac{1}{2}'' \times \text{WOF}$

Subcut (12) $1\frac{1}{2}'' \times 7\frac{1}{2}''$, (2) $1\frac{1}{2}'' \times 6\frac{1}{2}''$, (2) $1\frac{1}{2}'' \times 8\frac{1}{2}''$

Cut (8) $2\frac{1}{2}'' \times \text{WOF}$. Subcut (2) $2\frac{1}{2}'' \times 40\frac{1}{2}''$

Sew short ends of (6) strips. Subcut (2) $2\frac{1}{2}'' \times 56\frac{7}{8}''$
and (2) $2\frac{1}{2}'' \times 44\frac{1}{2}''$

20575-S (yellow cattail, medium): Cut (2) $1\frac{1}{2}'' \times \text{WOF}$

Subcut (8) $1\frac{1}{2}'' \times 5\frac{1}{2}''$

20576-S (yellow fish, light): Cut (1) $1\frac{1}{2}'' \times \text{WOF}$

Subcut (8) $1\frac{1}{2}'' \times 3\frac{1}{2}''$

20579-B (blue wave): Cut (1) $2\frac{1}{2}'' \times \text{WOF}$

Subcut (4) $2\frac{1}{2}'' \times 2\frac{1}{2}''$

20573-B (water scene): Following the Selvage

Cut (3) $6\frac{1}{2}''$ strips. Sew short ends. Subcut (2)
 $6\frac{1}{2}'' \times 60\frac{7}{8}''$

Following Width of Fabric. Cut (6) $6\frac{1}{2}'' \times \text{WOF}$ (approx. 22'')

Sew short ends. Subcut (2) $6\frac{1}{2}'' \times 56\frac{1}{2}''$

20574-S (orange foliage): Cut (2) pieces $2\frac{1}{4}$ yards, backing.
This is directional fabric. Sew one long edge, press open.

IMAGE 1 = Make 2

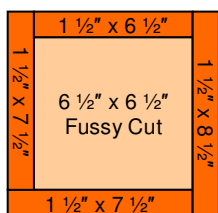
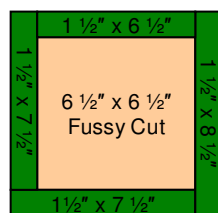


IMAGE 2 = Make 4



SEWING:

Make 4 Log Cabin Blocks

IMAGE 3

Start at the center with

Blue Wave $2\frac{1}{2}'' \times 2\frac{1}{2}''$

Working light to dark with

your fabrics as you go

around the square.

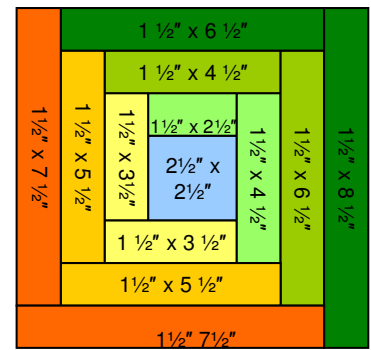
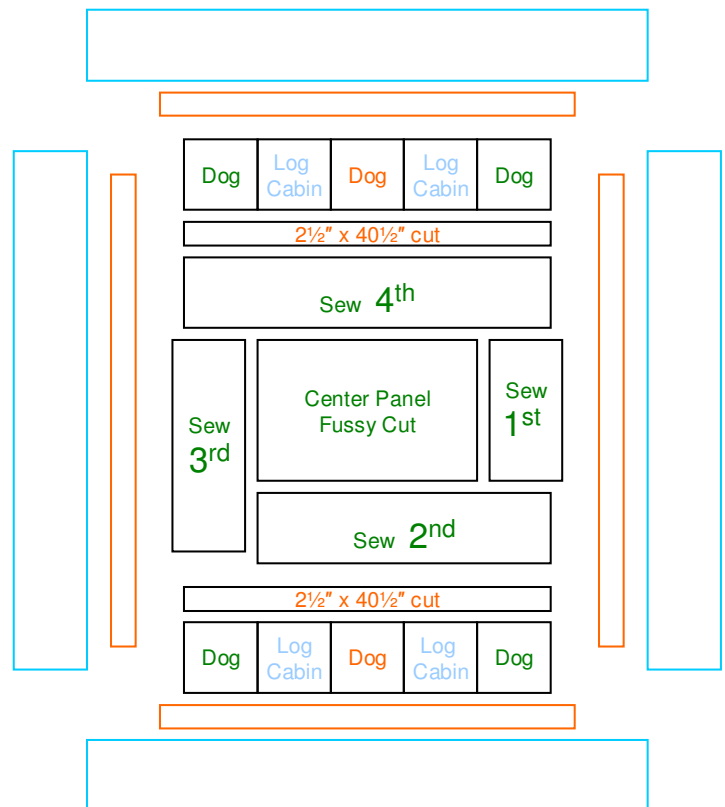


IMAGE 3

Sew remaining blocks per IMAGE 1 and IMAGE 2.

Sew blocks into 2 rows; follow image below.

Create the Center Block by sewing the Green Foliage pieces to each side, using the log cabin sewing method; see image below.



Assemble the quilt rows; see above image.

Add left and right side inner borders and then the top and bottom inner borders. Repeat with the outside borders.

Layer and machine quilt as desired. This is a great quilt for stitch in the ditch. Don't forget to use your walking foot/dual feed foot.

While all possible care has been taken to ensure the accuracy of this pattern, we are not responsible for printing errors or the way in which an individual work varies.