



Finished Size: 62" x 72"



20689-Q
1 yard



20690-BQ
1 yard



20691-W
3/4 yard



20691-H
3/8 yard



20692-H
1/2 yard



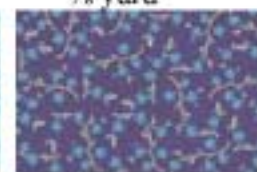
20692-Q
1 yard plus back



20693-B
3/8 yard



20695-Q
1 yard



20695-V
1 yard plus binding



20718-H
3/8 yard



20718-Q
3/8 yard

GYPSY BREEZE QUILT

Size: 62" x 72"

Quilt designed by Phyllis Dobbs

Skill level – Intermediate

Cutting:

20689-Q – Cut 2 pieces 19 1/2" x 5". Cut 2 pieces 10 1/2" x 5". Cut strips 5" wide totaling 60" length. Cut 2 squares 11 11/16", subcut diagonally then subcut diagonally again for 8 triangles (see diagram)



20690-BQ – Cutting crosswise of the fabric, cut and piece strips to form 2 strips 54 1/2" x 5 1/2" for top borders. Cut 2 blocks 5 3/4" square, fussy cutting with the large medallion centered in the block.

20691-W – Cut and piece strips to form 2 strips 72 1/2" x 4 1/2" for side borders.

20691-H – Cut 1 piece 21 1/2" x 3 1/2". Cut 1 piece 14 1/2" x 10 1/2".

20692-H – Cut 12 strips 2 3/16" x 5 7/8", and cut the right ends diagonally from the bottom corner to the top edge at a 45 degree angle. Cut 2 squares 6 7/16", subcut diagonally, then subcut diagonally again for 8 triangles (see diagram above). Cut strips 5" wide totaling 60" length.

20692-Q – Cut 4 blocks 11 3/8" square and subcut diagonally to form 8 triangles. Cut 20 strips 2 3/16" x 5 7/8", and cut the right ends diagonally from the bottom corner to the top edge at a 45 degree angle. Use this fabric for the back.

20693-B – Cut 1 strip 4 1/2" x 30 1/2". Cut 2 strips 27 1/2" x 1 1/2", and sew together for a 54 1/2" strip. Fussy cut the strips to center the design.

20695-Q – Cut 1 piece 7 1/2" x 2 1/2". Cut 1 strip crosswise x 4 3/16", subcut into 10 squares 4 3/16", and subcut again diagonally for 20 triangles. Cut 1 strip 5 3/8" x 24", subcut into 4 squares 5 7/8", and subcut diagonally to form 8 triangles. Cut 2 squares 8 3/16", subcut diagonally, and subcut diagonally again for 8 triangles (see cutting diagram above).

20695-V – Cut 2 strips 19 1/2" x 1 1/2". Cut strips 5 7/8" wide totaling 72" in length, subcut into 12 squares 5 7/8", and subcut diagonally for 24 triangles. Cut 1 strip 6 1/8" x 25", subcut into 4 squares 6 1/8", and subcut diagonally to form 8 triangles. Cut 4 squares 8 3/16", subcut diagonally and subcut diagonally again for 12 triangles (see diagram above).

20718-H – Cut 1 strip 4 3/16" x 30", subcut into 6 squares 4 3/16" and subcut diagonally to form 12 triangles. Cut 1 strip 36" x 4 3/8", subcut into 8 squares 4 3/8", and subcut diagonally to form 16 triangles.

20718-Q – Cut 2 strips 4 3/8" to total 53" in length, subcut into 12 squares 4 3/8", and subcut diagonally to form 24 triangles.

Construction:

Sew with 1/4" seam allowance and all fabrics right sides together. Press each seam toward the darker fabric as you sew.

1. Sew 5 blocks of Block A1, 1 block of Block A2, and 2 blocks of Block A3



Block A1



Block A2



Block A3

Sew together blocks in this order: A1, A2, A1. Sew together another unit of blocks in this order: A3, A1, A3, A1.

2. Sew 12 of Block B1 and 8 of Block B2



Block B1



Block B2

Sewing as shown below for placement of the pieces, sew 6 of Block B1 together. Repeat to sew the remaining 6 of Block B1 together. Sew 4 of block B2 together and repeat to sew remaining 4 of block B2 together. Sew the 7 1/2" x 2 1/2" piece of fabric 20695-Q to one end of a B2 strip. Sew the remaining B2 strip to the opposite side with the points facing the opposite direction.



3. Sew 2 of block C. Start sewing with the center block and sew fabric group of pieces in order to the outside pieces.



Block C

4. Sew the 5" wide strips of 20689-Q and 20692-H together lengthwise. Cut crosswise into 12 pieces 5" wide. Sew these pieces together on the same

edges that were just cut, alternating fabrics for a checkerboard arrangement.

5. See the quilt image for placement of blocks. Sew the 30 1/2" wide piece of fabric 20693-B to the bottom of the block unit A1/A2/A1. Sew the B2 block unit to the remaining edge of the fabric 20693-B strip.

6. Sew the strip of fabric 20691-H to one edge of a Block C. Sew the unit completed in 5 above to the remaining edge of the fabric 20691-H strip.

7. Sew the 54 1/2" strip of fabric 20693-B to the bottom edge of the created in 6 above. Sew the checkerboard block unit completed in 4 above to the bottom edge of strip 20693-B.

8. Sew a 10 1/2" x 5" strip of fabric 20689-Q to the top and bottom edges of the single remaining Block A1. Sew a 19 1/2" x 5" strip of fabric 20689-Q to the side edges of the block. Sew the 19 1/2" x 1 1/2" strips of fabric 20695-V to the top and bottom edges of this block unit.

9. Sew a Block B1 unit to each side of the block completed in 8 above. Turn the B1 units so that the points are pointed in the opposite direction of each other.

10. Sew the remaining Block C to the right edge of the block unit completed in 9 above.

11. Sew the unit completed in 10 above to the bottom edge of the unit completed in 7 above.

12. Sew the 14 1/2" x 10 1/2" piece of fabric 20691-H to the right end of the block unit A3/A1/A3/A1. Sew this unit to the bottom edge of the unit completed in 11 above.

13. Sew the striped borders strips to the top and bottom edges. Sew the fabric 20691-W border strips to the side edges.

Layer and quilt as desired.

Binding:

Sew ends of binding strips together diagonally to form a continuous strip to go all the way around the quilt edge. Sew binding to the front edge of the quilt, right sides together. Miter the corners. Turn the binding to the back and fold a 1/4" hem under. Slipstitch the binding to the back.

While all possible care has been taken to ensure the accuracy of this pattern, we are not responsible for printing errors or the way in which an individual work varies.