

Christmas Traditions Tree Skirt or Table Topper



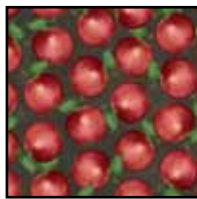
Approximate finished Size: 42"



21596 E



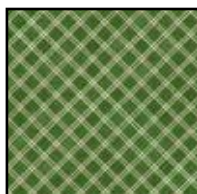
21601 E



21630 J



21599 M



21621 G

Fabric Requirements

DESIGN	YARDS
21596 E	1 panel
21601E or 21599 M (inc binding)	1¾
21630 J or 21621 G (inc backing)	2

Christmas Traditions Tree Skirt or Table Topper

Designed by Vicki Niro
Approximate Finish Size 42" Round
Skill Level: Intermediate

Note: Handle all pieces carefully after cutting to minimize stretching of bias edges. When pressing, be sure to move iron in an up and down motion ONLY - not back and forth.

CUTTING

#21596E - Tree Panel - Cut the skirt Panel $\frac{1}{2}$ " outside of the Dark Red Border. Fold circle in half, right side out and press. Fold the half circle in $\frac{1}{3}$ pie shapes, centering a tree image in the middle of each pie shape. Press. Open out the circle and press each pie shape in half through the center of each tree motif. There will be (12) pie shapes. See **Figure 3**

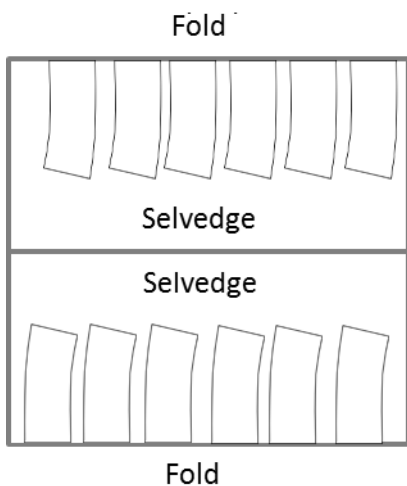
#21630J - Black Apples (Fabric B) - Cut (1) 45" x 44" (Width of Fabric). (BACKING)

Refer to Cutting Diagram below. Cut 12 Inner Border pieces.

#21601E - Red Roses (Fabric A) - Cut $\frac{3}{4}$ yard. From this piece and using your favorite method, make 175" of $2\frac{1}{2}$ " wide BIAS BINDING. Refer to Cutting Diagram below. Cut 12 Outer Border pieces.

Cutting Diagram

Fold fabric selvedges to center. Cut all pieces on the fold.



SEWING

All seams are sewn with a $\frac{1}{2}$ " seam allowance.

1. Attach the inner curved edge of the Outer Border A piece to the outer curved edge of the Inner Border B. Stitch with Outer Border A against the feed dogs of the machine. Make (12) Border Units. Carefully press seam allowance toward Outer Border A. **Figure 1**



Figure 1

2. Sew the (12) Border Units together to create the Border ring. Press seams open. **Figure 2**

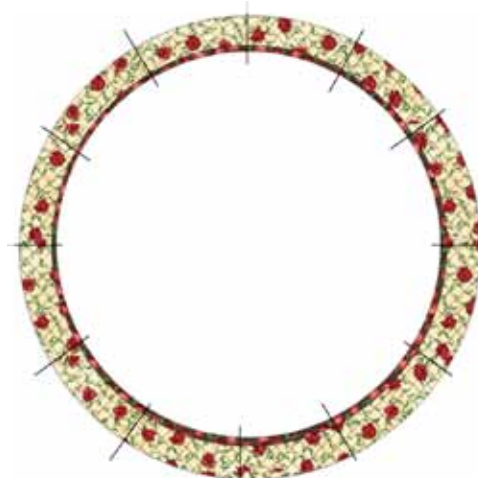


Figure 2

3. Pin the Border Ring to the Tree Panel right side together, matching Border Ring seams to the pressed fold lines. Pin carefully, easing any fullness. Sew with the Border Ring on the bottom (next to the feed dogs). **Figure 3**

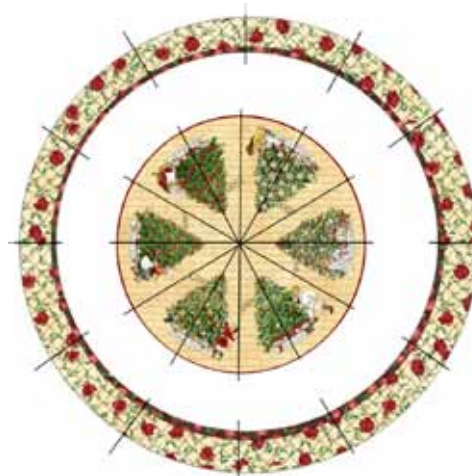


Figure 3

FINISHING

Layer and quilt.

Table Topper - Bind using your favorite method.

Tree Skirt - Using a compass draw a 5" circle around the center point of the tree skirt. Draw a straight line from the center point of the tree skirt to the outside edge. Center the line between the tree motifs. Cut on the straight line and around the circle. Bind the tree skirt using your favorite method. Use 12" lengths of binding or ribbon (optional) to make ties. Stitch ties to sides of slit.

While all possible care has been taken to ensure the accuracy of this pattern, we are not responsible for printing errors or the way in which individual work varies.

