



Quilt has pieced backing.  
Finished Size: 34" x 42½"



21735 Y



21737 B



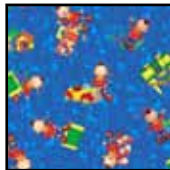
21739 Y



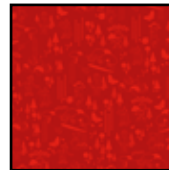
21742 R



21740 S



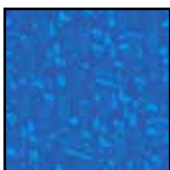
21740 Y



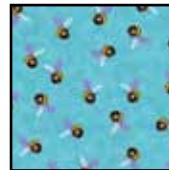
21741 R



21741 S



21741 Y



21742 Q

YARDAGE REQUIREMENTS	
Design	Yards
21735 Y	1 PANEL
21737 B	¼
21739 Y (bias binding)	¾
21742 R	¼
21740 S	⅜
21740 Y	1⅛
21741 R	⅓
21741 S	¼
21741 Y	¼
21742 Q	⅓

# Noddy & Friends

Designed by Vicki Niro

Skill level: Confident Beginner

Finished Quilt Size Approximate - 34" x 42½"

Finished Block Size - 10" x 10"

WOF = width of fabric

## Cutting:

**21742R** - Red Bees

Cut (1) strip 4½" x Width of Fabric (WOF), Subcut (6) 4½" x 4½" squares

**21742Q** - Blue Bees

Cut (2) strips 4½" x WOF, Subcut (12) 4½" x 4½" squares

**21737B** - Lt. Blue Character Toss

Cut (1) strip 4½" x WOF, Subcut (6) 4½" x 4½" squares

**21741R** - Red Tonal

Cut (1) strip 4½" x WOF, Subcut (6) 4½" x 4½" squares

Cut (2) strip 2½" x WOF, Subcut (6) 2½" x 8½" pieces

**21741Y** - Blue Tonal

Cut (2) strips 2½" x WOF, Subcut (6) 2½" x 10½" pieces

**21741S** - Yellow Tonal

Cut (2) strips 2½" x WOF, Subcut (6) 2½" x 8½" pieces

**21739Y** - Stripe

Using your favorite method, make 168" of 2½" wide Bias Binding

**21740S** - Yellow Noddy

Cut (2) 4½" x WOF, Subcut (12) 4½" x 4½" squares

**21740Y** - Blue Noddy

Cut (1) 4½" x WOF, Subcut (6) 4½" x 4½" squares

Cut (2) 2½" x WOF, Subcut (6) 2½" x 10½" pieces

Cut (5) 5½" x WOF. Miter the short ends together creating one long strip. Trim seam to ¼" and press open. Subcut (4) 5½" x 40½" pieces.

**21735Y** – 1 complete panel

Fussy cut the panel to 34½" x 43". Keep the Noddy image centered and all 4 sides of the Blue Border should have the same width.

## Sewing:

All seams are sewn with a ¼" seam.

Press seams to the dark fabric unless otherwise stated.

## Pieced Backing

### Block A:

1. Sew a 4½" x 4½" Blue Bees to a 4½" x 4½" Yellow Noddy to make Unit A



*Unit A*

2. Sew a 4½" x 4½" Red Tonal to a 4½" x 4½" Character Toss to make Unit B.



*Unit B*

3. Sew a Unit A to a Unit B to complete Unit 1.



*Unit 1*

4. Sew a 2½" x 8½" Yellow Tonal to the bottom of Unit 1 to make Unit 2.



*Unit 2*

5. Sew a 2½" x 10½" Blue Noddy to the right side of Unit 2 to complete Block A. Repeat steps 1- 5 and make 6 of Block A.



*Block A*

### Block B:

1. Sew a 4½" x 4½" Blue Bees to a 4½" x 4½" Blue Noddy to make Unit A



*Unit A*

2. Sew a 4½" x 4½" Yellow Noddy to a 4½" x 4½" Red Bee to make Unit B.



*Unit B*

# Noddy & Friends

3. Sew a Unit A to a Unit B to complete Unit 1.



*Unit 1*

4. Sew a 2½” x 8½” Red Tonal to the bottom of Unit 1 to make Unit 2.

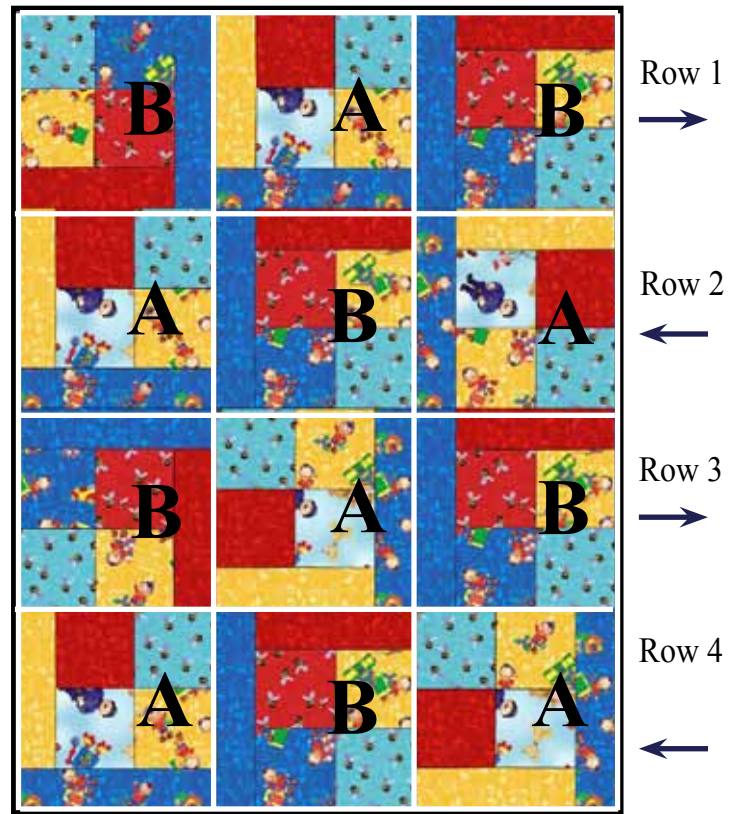


*Unit 2*

5. Sew a 2½” x 10½” Blue Tonal to the right side of Unit 2 to complete Block B. Repeat steps 1- 5 and make 6 Block B.



*Block B*



Block Placement Diagram  
*Press seams in direction of arrows.*

## Rows:

Following the Block Placement Diagram, sew Blocks A and Blocks B together to make Rows. Press the seams in Row 1 and Row 3 to the right and press the seams in Row 2 and Row 4 to the left. Sew Rows together to make the Backing Center. Sew 2 of the Blue Noddy 5½” x 40½” pieces to the left and right sides of the Backing Center. Press towards the Blue Noddy. Sew the remaining 2 Blue Noddy 5½” x 40½” pieces to the top and bottom of the Backing Center. Press towards the Blue Noddy.

The outside Border of the Pieced Backing is at least 3” larger on all 4 sides than the Fussy Cut Panel to allow for accurate centering of the backing.

Layer, taking care to center Pieced Backing. Quilt as desired. Trim excess backing and bind.

*While all possible care has been taken to ensure the accuracy of this pattern, we are not responsible for printing errors or the way in which individual work varies.*