

# Kids Can Quilt



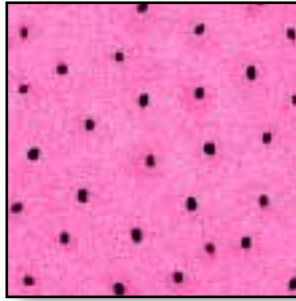
62" x 77"



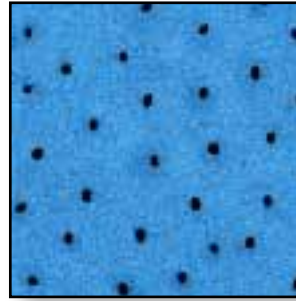
21681 J



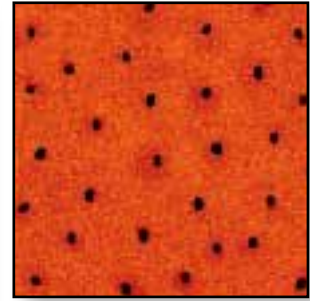
21686 P



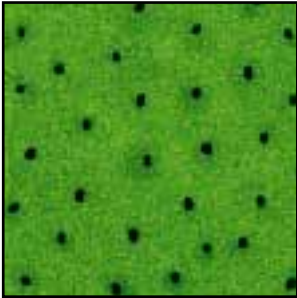
21686 B



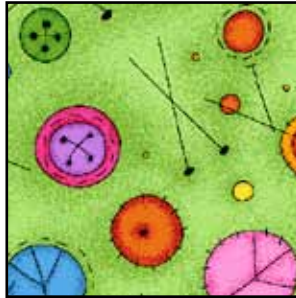
21686 R



21686 G



21685 H



21684 J



21683 RB



Pattern	Yardage	Description
21681 J	1 1/2 yds.	Kids print
21686 P	2/3 yd.	Pink dot
21686 B	3/4 yd.	Blue dot
21686 R	2/3 yd.	Orange dot
21686 G	1 1/4 yds.	Green dot
21685 H	5/8 yd.	Green button print
21684 J	1 3/4 yds.	Black sewing tools print
21683 RB	5 yds.	Patch print (backing)

*Quilt designed by Sue Harvey and Sandy Boobar, Pine Tree Country Quilts*

Finished block size: 12" x 12"

Finished quilt size: 62" x 77"

## Cutting

Kids print, 21681 J

- 4 strips 12 1/2" x 42"; cut into (12) 12 1/2" A squares

Pink dot, 21686 P

- 2 strips 4 1/2" x 42"; cut into (12) 4 1/2" B squares

- 5 strips 2" x 42"; cut into (15) 2" x 12 1/2" C strips

Blue dot, 21686 B

- 2 strips 4 1/2" x 42"; cut into (12) 4 1/2" B squares

- 6 strips 2" x 42"; cut into (16) 2" x 12 1/2" C strips

Orange dot, 21686 R

- 2 strips 4 1/2" x 42"; cut into (12) 4 1/2" B squares

- 5 strips 2" x 42"; cut into (15) 2" x 12 1/2" C strips

Green dot, 21686 G

- 2 strips 4 1/2" x 42"; cut into (12) 4 1/2" B squares

- 6 strips 2" x 42"; cut into (16) 2" x 12 1/2" C strips

- 7 strips 2 1/2" x 42" (binding)

Green button print, 21685 H

- 6 strips 2 1/2" x 42" (inner border)

Black sewing tools print, 21684 J

- 6 strips 2" x 42"; cut into (12) 2" D squares

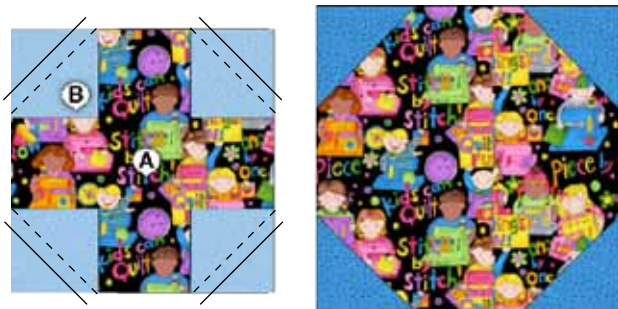
- 2 strips 3 1/2" x 42"; cut into (20) 3 1/2" E squares

- 7 strips 5 1/2" x 42" (outer border)

## Pieced Blocks

1. Mark a diagonal line on the wrong side of each B square.
2. Place a marked blue B square right sides together on each corner of an A square. Stitch on the marked line, trim the seam allowance to 1/4" and press the B squares to the right side to make a 12 1/2" x 12 1/2" blue block. Repeat to make 3 blocks of each color. (Fig. 1)

Figure 1



## Sashing Strips

1. Sew the C strips together in pairs to make 6 pink/green, 4 pink/orange, 5 blue/green, 5 green/orange, 5 pink/blue, and 6 blue/orange pieced strips. (Fig. 2)

Figure 2



2. Mark a diagonal line on the wrong side of each D square.
3. Place a marked D square right sides together on opposite corners of a pink/green strip. Stitch, trim and press as for the blocks. Repeat on the remaining corners of the pink/green strip to complete one sashing strip. Repeat with all pieced strips. (Fig. 3)

Figure 3



## Quilt Center

1. Sew 3 blocks alternately together with 4 sashing strips to make a block row. (Fig. 4) Press seams toward the blocks. Repeat to make 4 block rows referring to the quilt diagram for placement of the different colors.

Figure 4



2. Sew 3 sashing strips alternately together with 4 E squares to make a sashing row. (Fig. 5) Press seams toward the E squares. Repeat to make 5 sashing rows.

Figure 5



3. Sew the block and sashing rows alternately together to complete the 48 1/2" x 63 1/2" quilt center. Press seams toward the sashing rows.

## Borders

1. Sew the green button print strips short ends together to make a long strip. Cut (2) 63 1/2" strips and (2) 52 1/2" strips. Sew the longer strips to the long sides and the shorter strips to the top and bottom. Press seams toward the strips.
2. Sew the black sewing tools print strips short ends together to make a long strip. Cut (2) 67 1/2" strips and (2) 62 1/2" strips. Sew the longer strips to the long sides and the shorter strips to the top and bottom. Press seams toward the strips. Layer, quilt as desired, and bind using the green dot binding strips.

While all possible care has been taken to ensure the accuracy of this pattern we cannot be responsible for printing errors or the way in which individual work varies. NOT FOR RESALE/ Spring 2011