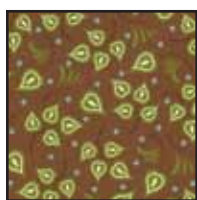


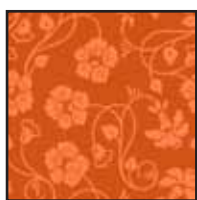


Designed By: Janice Averill  
Finished Quilt Size: 77" x 85"

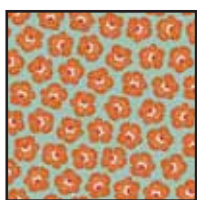




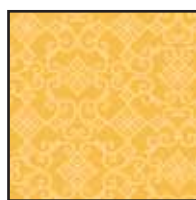
22332 A



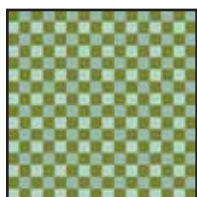
22334 O  
(Inc. Binding)



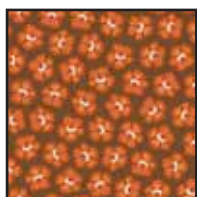
22330 Q  
(Backing)



22331 S



22333 FQ



22330 A



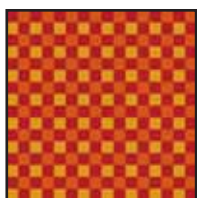
22334 E



22329 Q  
(Outer Border)



22331 R



22333 RO

FABRIC REQUIREMENTS	
Design:	Yards
22332 A	1
22334 O (Inc. Binding)	2
22330 Q	1
22331 S	1¼
22333 FQ	2
22330 A	1
22334 E	3⅛
22329 Q (Outer Border)	2½
22331 R	7⁄8
22333 RO	5⁄8
22330 Q (Backing)	6

## Cutting Directions:

WOF = width of fabric

### 22329 Q: Large Print

- Cut 4 strips @ 7½" x LOF (1¼ yd = 45")

### 22330 A: Brown Poppies

- Cut 1 strip @ 2½" x WOF, sub cut 8 squares @ 2½" x 2½".
- Cut 2 strips @ 3⅛" x WOF, sub cut 24 squares @ 3⅛" x 3⅛".
- Cut 1 strip @ 3¼" x WOF, sub cut 4 squares @ 3¼" x 3¼", trim remainder of strip to 3⅛", sub cut 3 squares @ 3⅛" x 3⅛".
- Cut 1 strip @ 5⅜" x WOF, sub cut 2 squares @ 5⅜" x 5⅜", trim remainder of strip to 5¼", sub cut 2 squares @ 5¼" x 5¼", divide each square twice diagonally into 8 triangles, trim remainder of strip to 4⅞", sub cut 1 square @ 4⅞" x 4⅞", divide square once diagonally into 2 triangles.

### 22330 Q: Blue Poppies

- Cut 3 strips @ 3⅛" x WOF, sub cut 27 squares @ 3⅛" x 3⅛", trim remainder of strip to 2½", sub cut 8 squares @ 2½" x 2½".
- Cut 1 strip @ 5⅜" x WOF, sub cut 3 squares @ 5⅜" x 5⅜", trim remainder of strip to 4⅞", sub cut 1 square @ 4⅞" x 4⅞", divide square once diagonally into 2 triangles, trim remainder of strip to 3⅜", sub cut 2 squares @ 3⅜" x 3⅜".

### 22331 R: Red Tonal

- Cut 7 strips @ 2" x WOF for Border #1

### 22331 S: Yellow Tonal

- Cut 1 strip @ 2½" x WOF, sub cut 16 squares @ 2½" x 2½".
- Cut 1 strip @ 2⅞" x WOF, sub cut 4 squares @ 2⅞" x 2⅞", divide each square once diagonally – 8 triangles.
- Cut 2 strips @ 3⅛" x WOF, sub cut 24 squares @ 3⅛" x 3⅛".
- Cut 1 strip @ 5⅜" x WOF sub cut 5 squares @ 5⅜" x 5⅜", trim remainder of strip to 5¼", sub cut 2 squares @ 5¼" x 5¼", divide each square twice diagonally – 8 triangles.
- Cut 18 Bell Flower centers (Template H) & 18 Lily centers (Template B).

### 22332 A: Brown Leaves

- Cut 2 strips @ 2½" x WOF, sub cut 24 squares @ 2½" x 2½".
- Cut 2 strips @ 3⅛" x WOF, sub cut 18 squares @ 3⅛" x 3⅛", trim remainder of strip to 2⅞", sub cut 4 squares @ 2⅞" x 2⅞", divide each square once diagonally – 8 triangles.
- Cut 1 strip @ 5⅜" x WOF, sub cut 5 squares @ 5⅜" x 5⅜", trim remainder of strip to 5¼", sub cut 2 squares @ 5¼" x 5¼", divide each square twice diagonally – 8 triangles.

## 22333 FQ: Green Check

- Cut 1 strip @  $2\frac{1}{2}$ " x **WOF**, sub cut 8 squares @  $2\frac{1}{2}$ " x  $2\frac{1}{2}$ ".
- Cut 3 strips @  $3\frac{1}{8}$ " x **WOF**, sub cut 35 squares @  $3\frac{1}{8}$ " x  $3\frac{1}{8}$ ".
- Cut 1 strip @  $5\frac{3}{8}$ " x **WOF**, sub cut 3 squares @  $5\frac{3}{8}$ " x  $5\frac{3}{8}$ ", trim remainder of strip to  $4\frac{7}{8}$ ", sub cut 1 square @  $4\frac{7}{8}$ " x  $4\frac{7}{8}$ ", divide each square once diagonally – 8 triangles. Trim remainder of strip to  $3\frac{3}{8}$ ", sub cut 2 squares @  $3\frac{3}{8}$ " x  $3\frac{3}{8}$ ".
- Cut 1 strip @ 20" **WOF**, cut bias strips for stems (28" bias strips)
- Cut 18 leaves (Template G)
- Cut 18 of each tear drop shape (Templates C, D, I, J & E.)

## 22333 RO: Red Check

- Cut 18 Lilies (Template A)

## 22334 A: Cream Tonal

- Cut 6 strips @  $6\frac{1}{2}$ " x **LOF**, join pairs of strips to make three long strips. Cut these @  $6\frac{1}{2}$ " x 69".
- Cut 4 strips @  $12\frac{3}{4}$ " x **WOF**, sub cut 10 squares @  $12\frac{3}{4}$ " x  $12\frac{3}{4}$ ", divide each square twice diagonally into 4 side setting triangles.
- Trim the remaining fabric to 7" x **WOF**. Sub cut 2 squares @ 7" x 7", divide each square diagonally – 4 corner setting triangles.
- Cut 1 strip @ 7" x **WOF**: sub cut 6 squares @ 7" x 7", divide each square once diagonally – 12 corner setting triangles.

## 22334 O: Orange Tonal

- Cut 3 strips @  $3\frac{1}{8}$ " x **WOF**, sub cut 36 squares @  $3\frac{1}{8}$ " x  $3\frac{1}{8}$ ".
- Cut 1 strip @  $3\frac{1}{4}$ " x **WOF**, sub cut 4 squares @  $3\frac{1}{4}$ " x  $3\frac{1}{4}$ ", trim remainder of strip to  $3\frac{1}{8}$ ", sub cut 3 squares @  $3\frac{1}{8}$ " x  $3\frac{1}{8}$ ".
- Cut 1 strip at  $5\frac{3}{8}$ " x **WOF**, sub cut 2 squares @  $5\frac{3}{8}$ " x  $5\frac{3}{8}$ ", trim remainder of strip to  $5\frac{1}{4}$ " x  $5\frac{1}{4}$ ", sub cut 2 squares @  $5\frac{1}{4}$ " x  $5\frac{1}{4}$ ", divide each square twice diagonally into 8 triangles. Trim remainder of strip to  $4\frac{7}{8}$ ", sub cut 1 square @  $4\frac{7}{8}$ " x  $4\frac{7}{8}$ ", divide square once diagonally into 2 triangles.
- Cut 18 Bell Flowers (Template G).
- Cut 16 strips @  $2\frac{1}{2}$ " **WOF** for binding.

## Sewing Directions:

Sew all seams using a  $\frac{1}{4}$ " seam allowance unless noted otherwise. Press all seams flat before pressing them open or to one side as directed.

**Note:** 2 blocks for each block design x 2 color ways per block design

When making Half Square Triangles (HST) draw all lines on the wrong side of the fabric.

## Flying X - Color Way A - 2 blocks/ 8" finished size



Figure 1

1. Draw a diagonal line on (4) Orange Tonal  $3\frac{1}{8}$ " squares. With right sides together (RST), place each Orange Tonal square on top of a Brown Leaves  $3\frac{1}{8}$ " square. Sew a scant  $\frac{1}{4}$ " seam on each side of the drawn line. Cut on the drawn line, yielding (2) Half Square Triangle units (HST). Press the seams toward the Orange Tonal. Make (8) HST units. Trim the HST units to  $2\frac{1}{2}$ " each.

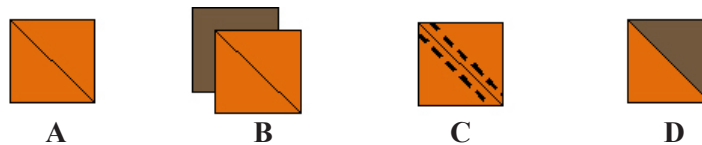


Figure 2

2. Draw a diagonal line on the remaining 4 Orange Tonal  $3\frac{1}{8}$ " squares. With right sides together (RST), place each Orange Tonal square on top of a Blue Poppies  $3\frac{1}{8}$ " square. Sew a scant  $\frac{1}{4}$ " seam on each side of the drawn line. Cut on the drawn line, yielding (2) Half Square Triangle units (HST). Press the seams toward the Orange Tonal. Make (8) HST units. Trim the HST units to  $2\frac{1}{2}$ " each.

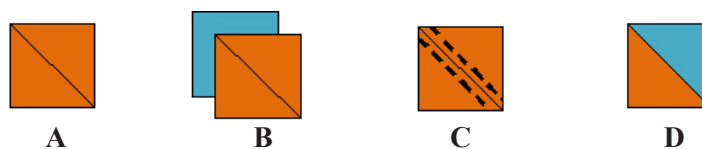


Figure 3

- As shown below, sew a Brown/Orange HST unit to a Blue Poppies  $2\frac{1}{2}$ " square and press the seam toward the Blue Poppy square. This will be unit A. Sew a Blue/Orange HST unit to a Brown Leaves  $2\frac{1}{2}$ " square and press the seam away from the Brown Leaves square. This will be unit B. Make sure that the HST units are rotated correctly. Repeat to make (8) of each unit.



Unit A



Unit B

- Sew one unit A to one Unit B as shown below. Make sure that the units are rotated correctly. Press the seam toward unit A. Repeat to make 8 quarter units.
- Sew two quarter units together as shown below. Make sure that the HST units are rotated correctly. Press the seam to one side. Repeat to make 4 half units. Press all the seams for all units in the same direction.
- Sew (2) half units together as shown below. Press the seam to one side. Repeat to make (2) blocks. Blocks should measure  $8\frac{1}{2}$ " unfinished.

### Flying X - Color Way B - 2 blocks/ 8" finished size



Figure 4

Follow construction directions for Flying X – Color Way A blocks to create Flying X Color Way B blocks:

- Create (8) HSTs of (4) Green check  $3\frac{1}{8}$ " squares and (4) Yellow Tonal  $3\frac{1}{8}$ " squares. Press the seam toward the green check and trim the HST units to  $2\frac{1}{2}$ " each.
- Create (8) HSTs of (4) Green check  $3\frac{1}{8}$ " squares and (4) Brown Poppy  $3\frac{1}{8}$ " squares. Press the seam toward the green check and trim the HST units to  $2\frac{1}{2}$ " each.
- Refer to steps 3 – (8) of Flying X - Color Way A to complete the blocks.

### Flying Dutchman - Color Way A - 2 blocks / 8" finished size

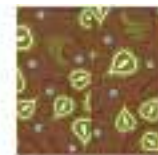


Figure 5

- Create (16) HSTs of 8 Orange Tonal  $3\frac{1}{8}$ " squares and (8) Brown Leaves  $3\frac{1}{8}$ " squares. Press seam toward Orange Tonal, trim the HST units to  $2\frac{1}{2}$ " each.
- Create (8) HSTs of remaining (4) Orange Tonal  $3\frac{1}{8}$ " squares and (4) Blue Poppy  $3\frac{1}{8}$ " squares. Press seam toward the Orange Tonal, trim the HST units to  $2\frac{1}{2}$ " each.
- As shown below, sew a Blue/Orange HST unit to a Brown Leaves  $2\frac{1}{2}$ " square. This will be unit A. Sew a Brown/Orange HST unit to a Brown Leaves  $2\frac{1}{2}$ " square. This will be unit B. Make sure that the HST units are rotated correctly. The seams for both units should be pressed toward the Brown Leaves square. Repeat to make (4) of each unit.



Unit A

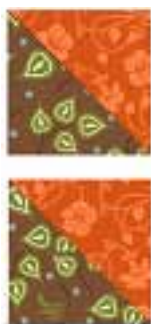


Unit B





4. Sew (1) unit A to one unit B as shown below. Make sure that the units are rotated correctly. Press the seam toward unit A. Repeat to make (4) A/B units.
5. As shown below, sew two Brown/Orange HST units together. This will be unit C. Press the seam toward the bottom Brown/Orange HST unit. Sew a Blue/Orange HST unit to a Brown/Orange HST unit. This will be unit D. Press the seam toward the Blue/Orange HST unit. Make sure that the HST units are rotated correctly. Repeat to make (4) of each unit.



**Unit C**

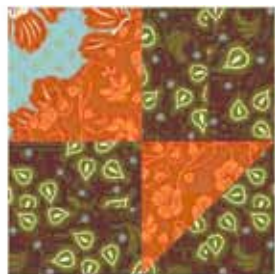


**Unit D**

6. Sew (1) unit C to one unit D as shown below. Make sure that the units are rotated correctly. Press the seam toward unit C. Repeat to make (4) C/D units.
7. Sew unit C/D to unit A/B as shown below. Make sure that the units are rotated correctly. Press the seam toward unit A/B. Repeat to make (4) half block units.



**Unit C/D**



**Unit A/B**

8. Sew the half block units together as shown below. Press the seam to one side. Repeat to make (2) blocks. Blocks should measure 8½" unfinished.

**Flying Dutchman - Color Way B - 2 blocks/ 8" finished size**



**Figure 6**

*Follow construction directions for Flying Dutchman – Color Way A blocks to create Flying Dutchman Color Way B blocks:*

1. Create (16) HSTS of (8) Yellow Tonal 3½" squares and (8) Green Check 3½" squares. Press seam toward green check, trim the HST units to 2½" each.
2. Create (8) HSTS of (4) Yellow Tonal 3½" squares and (4) Brown Poppy 3½" squares. Press seam open, trim the HST units to 2½" each.
3. Refer to steps 3 – (8) of Flying Dutchman - Color Way A to complete the blocks.

**Old Maid's Puzzle - Color Way A - 2 blocks/ 8" finished size**



**Figure 7**

1. Create (6) HSTS of (3) Orange Tonal 3½" squares and (3) Brown Leaves 3½" squares. Press seam toward brown leaves, trim the HST units to 2½" each.
2. Create (6) HSTS of Blue Poppies 3½" squares and (8) Brown Leaves 3½" squares. Press seam toward brown leaves, trim the HST units to 2½" each.

3. Sew a Brown/Orange HST unit to a Brown Leaves  $2\frac{1}{2}$ " square. This will be unit A. Sew a Blue/Brown HST unit to a Brown Leaves  $2\frac{1}{2}$ " square. This will be unit B. Press the seams for both units toward the Brown Leaves square. Make sure that the units are rotated correctly. Repeat to make (4) of each unit.



Unit A

Unit B

4. Sew one unit A to one unit B as shown below. Make sure that the units are rotated correctly. Press the seam toward unit A. Repeat to make (4) A/B units.

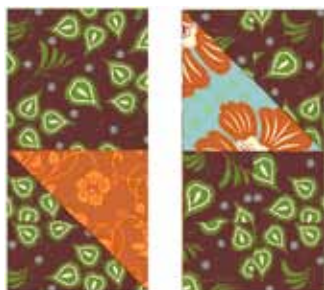


Figure 8

5. Sew a Brown Leaves triangle to a Brown/Orange HST unit as shown below. Make sure that the HST unit is rotated correctly. Press the seam toward the triangle. Repeat to make (2) units.

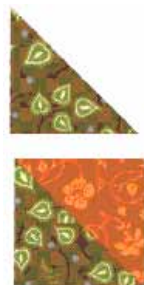


Figure 9

6. Sew another Brown Leaves triangle to this unit as shown below. Press the seam toward the Brown Leaves triangle. Repeat to complete (2) pieced triangle units.

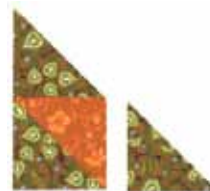


Figure 10

7. Sew a pieced triangle unit to a Blue Poppies triangle. Press the seam toward the Blue Poppies triangle. Repeat to make (2) Blue Poppies triangle units.

8. Sew a Brown Leaves triangle to a Brown/Blue HST unit as shown below. Make sure that the HST unit is rotated correctly. Press the seam toward the triangle. Repeat to make (2) units.



Figure 11

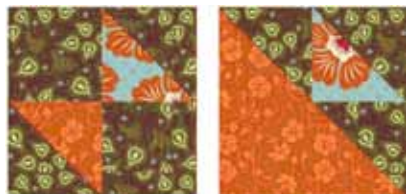
9. Sew another Brown Leaves triangle to this unit as shown below. Press the seam toward the Brown Leaves triangle. Repeat to complete (2) pieced triangle units.



Figure 12

10. Sew a pieced triangle unit to an Orange Tonal triangle. Press the seam toward the Orange Tonal triangle. Repeat to make (2) Orange Tonal triangle units.

11. Sew an Orange Tonal triangle unit to an A/B unit as shown below. Make sure that the units are rotated correctly. Press the seam toward the large triangle unit. Repeat to make (2) Orange Tonal half block units.



**Figure 13**

12. Sew a Blue Poppies triangle unit to an A/B unit as shown below. Make sure that the units are rotated correctly. Press the seam towards the large triangle unit. Repeat to make (2) Blue Poppies half block units.



**Figure 14**

13. Sew an Orange Tonal half block unit to a Blue Poppies half block unit as shown below. Press the seam to one side. Repeat to make (2) blocks. Blocks should measure 8 1/2" unfinished.



**Figure 15**

**Old Maid's Puzzle - Color Way B - 2 blocks/ 8" finished size**



**Figure 16**

1. Create (6) HSTs of (3) Yellow Tonal 3 1/8" squares and (3) Green Check 3 1/8" squares. Press seam toward green check, trim the HST units to 2 1/2" each.
2. Create (6) HSTS of (3) Yellow Tonal 3 1/8" squares and (3) Brown Poppies 3 1/8" squares. Press seam toward brown poppies, trim the HST units to 2 1/2" each.
3. Refer to Old Maid's Puzzle – Color Way A for construction directions.

**Mosaic - Color Way A - 2 blocks/ 8" finished size**



**Figure 16a**

1. Create (8) HSTS of 4 Orange Tonal 3 1/8" squares and 4 Blue Poppies 3 1/8" squares. Press seam toward orange tonal, trim the HST units to 2 1/2" each.
2. With the remaining (8) Orange Tonal 3 squares, divide each square once on the diagonal. Sew the long side of an Orange Tonal triangle to the right side of a Brown Leaves triangle. Press the seam toward the Orange Tonal triangle and trim the "dog ear" off. Sew another Orange Tonal triangle to the left side of a Brown Leaves triangle. Press the seam toward the Orange Tonal triangle and trim the "dog ear" off. Repeat to make (8) Flying Geese units.



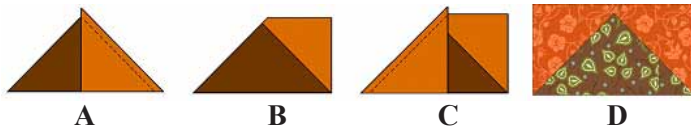


Figure 17

- Trim Flying Geese unit to  $2\frac{1}{2}$ " x  $4\frac{1}{2}$ " as shown in the following diagram. First line up the 90 degree, intersecting diagonal lines on your  $6\frac{1}{2}$ " x  $12\frac{1}{2}$ " ruler with the diagonal seams on the Flying Geese unit as shown below. Trim the fabric that extends past the top of the unit; you should have a  $\frac{1}{4}$ " seam allowance past the point.

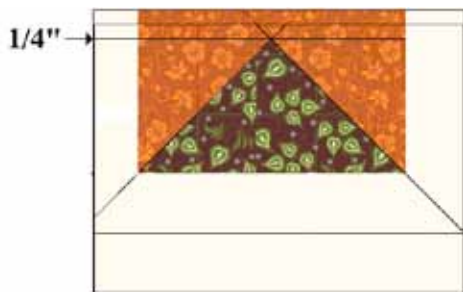


Figure 18

- Line up the diagonal line on your  $6\frac{1}{2}$ " x  $6\frac{1}{2}$ " ruler with the diagonal seam on the Flying Geese unit as shown below. The intersection for  $2\frac{1}{4}$ " should line up with the intersection of the diagonal seam and the edge just trimmed in the last step should line up with  $2\frac{1}{2}$ " on your ruler. Trim the fabric that extends past the top and right edges of the rotary ruler.

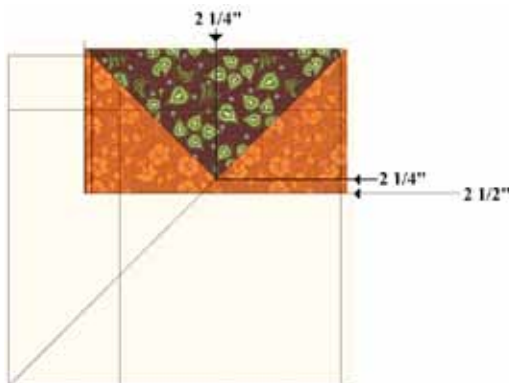


Figure 19

- Line up the diagonal line on your  $6\frac{1}{2}$ " x  $6\frac{1}{2}$ " ruler with the diagonal seam on the Flying Geese unit as shown below. The intersection for  $2\frac{1}{4}$ " should line up with the intersection of the diagonal seam and the edge just trimmed in the last step should line up with  $2\frac{1}{2}$ " on your ruler as shown below. Trim fabric that extends past the edge of the right edge of the rotary ruler.

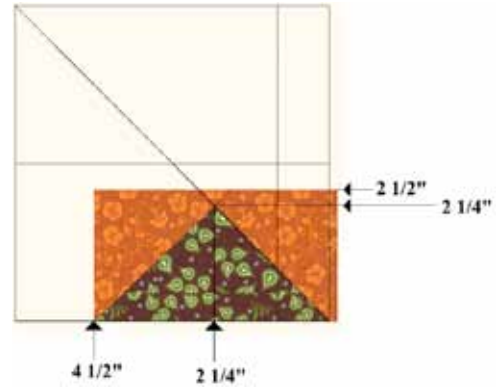


Figure 20

- Divide (2) Orange Tonal  $3\frac{1}{4}$ " x  $3\frac{1}{4}$ " squares once, diagonally. Fold the Orange Tonal triangles in half WST (wrong sides together); crease the fold to mark the center. Fold (1) Blue Poppies  $3$ " x  $3$ " square in half RST (right sides together), crease the fold to mark the center. Matching the center creases, sew the triangles to the Blue Poppies Square as shown below. Press the seams toward the triangles. Repeat with the remaining Blue Poppies  $3$ " x  $3$ " square and Orange Tonal triangles to make (2) units.



Figure 21



7. Divide (2) more Orange Tonal  $3\frac{1}{4}$ " x  $3\frac{1}{4}$ " squares once, diagonally. Fold the Orange Tonal triangles in half WST; crease the fold to mark the center. Fold one Blue Poppies square w/ triangles in half RST; crease the fold to mark the center. Matching the center creases sew the triangles to the remaining sides of the Blue Poppies Square as shown below. Press the seams toward the triangles. Repeat with the remaining Blue Poppies square w/ triangles to make (2) pieced center square units. Trim the unit to measure  $4\frac{1}{2}$ " x  $4\frac{1}{2}$ ".



Figure 22

8. Sew (2) Flying Geese units to opposite sides of a pieced center square as shown below. Make sure that the units are rotated correctly. Press the seams toward the Flying Geese units. Repeat with the remaining pieced center square to make (2) center row units.



Figure 23

9. Sew (2) Blue/Orange HST units to the short ends of a Flying Geese unit as shown below. Make sure that the units are rotated correctly. Press the seams towards the Flying Geese units. Repeat with the remaining Flying Geese unit and Blue/Orange HST units to make (4) top & bottom row units.



Figure 24

10. Sew the top & bottom row units to the center row units as shown below. Make sure that the units are rotated correctly. Repeat to make (2) blocks. Blocks should measure  $8\frac{1}{2}$ " unfinished.



Figure 25

### Mosaic - Color Way B - 2 blocks/ 8" finished size



Figure 26

1. Create (8) HSTS of (4) Green Check  $3\frac{1}{8}$ " squares and (4) Brown Poppies  $3\frac{1}{8}$ " squares. Press seam toward brown poppies, trim the HST units to  $2\frac{1}{2}$ " each.
2. With the remaining (8) Brown Poppies  $3\frac{1}{8}$ " squares, divide each square once on the diagonal. Sew the long side of a Brown Poppies triangle to the right side of a Yellow Tonal triangle. Press the seam toward the Brown Poppies triangle and trim the "dog ear" off. Sew another Brown Poppies triangle to the left side of a Yellow Tonal triangle. Press the seam toward the Brown Poppies triangle and trim the "dog ear" off. Repeat to make (8) Flying Geese units.
3. Continue with Flying Geese directions as used in Mosaic - Color Way A.

### Hour Glass Color Way A - 2 blocks / 8" finished size



Figure 27

1. Create (2) HSTs of 1 Blue Poppy  $5\frac{3}{8}$ " squares and Brown Leaves  $5\frac{3}{8}$ " squares. Press seam toward brown leaves.

2. Draw a line on the wrong side of (2) of the HST units. With RST, place one HST unit on another HST unit as shown below. The seams should butt up against each other. Make sure that the units are rotated correctly. Sew a scant  $\frac{1}{4}$ " seam on each side of the drawn line. Cut on the drawn line, yielding 2-Quarter Square Triangle Units (QST). Press the seams to one side or open. Make (2) QST units.

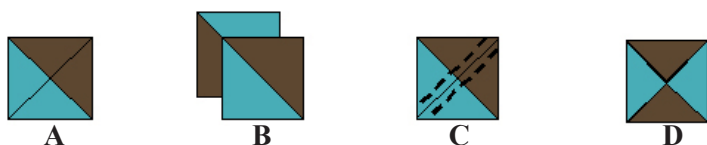


Figure 28

3. Square up the QST units to  $4\frac{1}{2}$ " x  $4\frac{1}{2}$ ". Place your rotary cutting ruler on the unit with the intersection of the  $2\frac{1}{4}$ " lines meeting at the intersection of the triangles in the center of the QST unit. Also, the  $4\frac{1}{2}$ " lines should align with the diagonal seam. See the image below. Trim the two sides that extend past the rotary ruler.

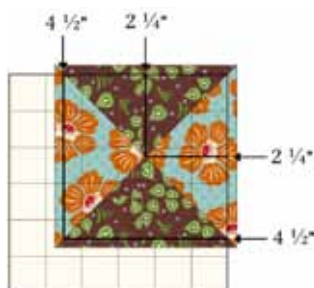


Figure 29

4. Rotate the QST unit 180 degrees. Once again, place your rotary cutting ruler with the intersection of the  $2\frac{1}{4}$ " lines meeting at the intersection of the triangles in the center of the QST unit. Also, the  $4\frac{1}{2}$ " lines should align with the diagonal seam. The previously trimmed corner should nestle into the intersection of the  $4\frac{1}{2}$ " lines on the rotary ruler. Trim the two sides extending past the rotary ruler.

5. Draw a diagonal line on the (4) Orange Tonal 3" squares. With right sides together (RST), place each Orange Tonal square on top of a Blue Poppies 3" square. Sew a scant  $\frac{1}{4}$ " seam on each side of the drawn line. Cut on the drawn line, yielding (2) Half Square Triangle Units (HST). Press the seams toward the Orange Tonal. Make (8) HST Units. Trim the HST units to  $2\frac{1}{2}$ " each. Set these aside.

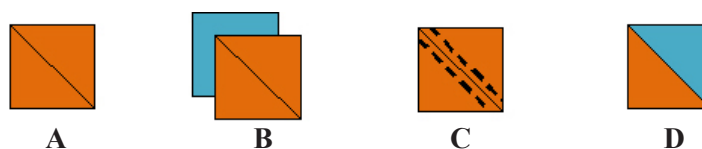


Figure 30

6. With the remaining (8) Blue Poppies (3) squares, divide each square once on the diagonal. Sew the long side of a Blue Poppies triangle to the right side of an Orange Tonal triangle. Press the seam toward the Blue Poppies triangle and trim the "dog ear" off. Sew another Blue Poppies triangle to the left side of an Orange Tonal triangle. Press the seam toward the Blue Poppies triangle and trim the "dog ear" off. Repeat to make (8) Flying Geese units.



Figure 31

7. Trim Flying Geese unit to  $2\frac{1}{2}$ " x  $4\frac{1}{2}$ " as shown in the following diagram. First line up the 90 degree, intersecting diagonal lines on your  $6\frac{1}{2}$ " x  $12\frac{1}{2}$ " ruler with the diagonal seams on the Flying Geese unit as shown below. Trim the fabric that extends past the top of the unit; you should have a  $\frac{1}{4}$ " seam allowance past the point.



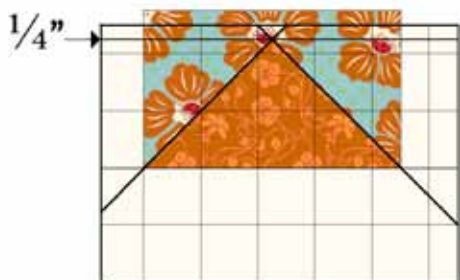


Figure 32

8. Line up the diagonal line on your  $6\frac{1}{2}$ " x  $6\frac{1}{2}$ " ruler with the diagonal seam on the Flying Geese unit as shown below. The intersection for  $2\frac{1}{4}$ " should line up with the intersection of the diagonal seam and the edge just trimmed in the last step should line up with  $2\frac{1}{2}$ " on your ruler. Trim the fabric that extends past the top and right edges of the rotary ruler.

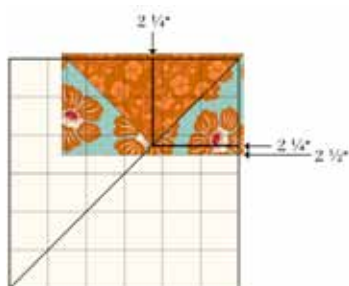


Figure 33

9. Line up the diagonal line on your  $6\frac{1}{2}$ " x  $6\frac{1}{2}$ " ruler with the diagonal seam on the Flying Geese unit as shown below. The intersection for  $2\frac{1}{4}$ " should line up with the intersection of the diagonal seams. The fresh trimmed edges will line up with  $4\frac{1}{2}$ " and  $2\frac{1}{2}$ " on your ruler as shown below. Trim fabric that extends past the edge of the right edge of the rotary ruler.

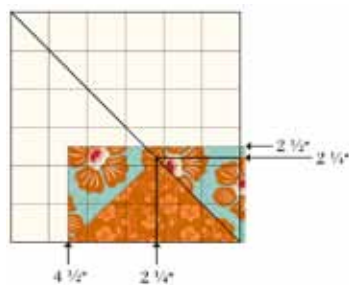


Figure 34

10. Sew a Flying Geese unit to opposite sides of a QST center unit as shown below. Press the seams toward the center. Repeat to make (2) center row units.



Figure 35

11. Sew a HST unit to opposite sides of a Flying Geese unit as shown below. Press the seams away from the center. Repeat to make (4) outer row units.



Figure 36

12. Sew the outer row units to the top & bottom of the center row as shown below. Press the seams to the center. Repeat to make (2) blocks. Blocks should measure  $8\frac{1}{2}$ " unfinished.



Figure 37

## Hour Glass - Color Way B - 2 blocks/ 8" finished size



Figure 38

1. Create (2) HSTs of Green Check  $5\frac{3}{8}$ " squares and Yellow Tonal  $5\frac{3}{8}$ " squares. Press seam toward the green check.
2. Continue with Quarter Square Triangle directions from Hour Glass, Color Way A.

## Pin Wheel - Color Way A - 2 blocks/ 8" finished size



Figure 40

1. Create (2) HSTs of 1 Orange Tonal  $5\frac{3}{8}$ " squares and Brown Leaves  $5\frac{3}{8}$ " squares. Press seam toward the Brown Leaves.
2. Create (2) HSTs of 1 Blue Poppies  $5\frac{3}{8}$ " squares and Brown Leaves  $5\frac{3}{8}$ " squares. Press seam toward the Brown Leaves.
3. Continue with Quarter Square Triangle construction and trimming directions from Hour Glass, Color Way A.
4. Sew (2) of these units together as shown below. Press the seam open. Repeat to make (2) blocks. Blocks should measure  $8\frac{1}{2}$ " unfinished.



Figure 41

## Pin Wheel - Color Way B - 2 blocks/ 8" finished size



Figure 42

1. Create (2) HSTs of (1) Green Check  $5\frac{3}{8}$ " squares and Yellow Tonal  $5\frac{3}{8}$ " squares. Press seam toward the Green Check.
2. Create (2) HSTs of (1) Yellow Tonal  $5\frac{3}{8}$ " squares and Brown Poppies  $5\frac{3}{8}$ " squares. Press seam toward the Brown Poppies.
3. Continue with Quarter Square Triangle construction and trimming directions from Hour Glass, Color Way A.

### Appliqués:

Use your favorite appliqué technique to create the appliqué designs. If you don't have a favorite technique already, there are many books available on the subject. Try a few different techniques by making samples for each and decide which one works best for you.

If you are not using a fused appliqué technique, remember to add the  $\frac{1}{4}$ " seam allowance to the templates before you prepare your appliqués.

**Note:** The appliqué image shown in the directions represents one repeat of the design. Repeat the appliqué design as needed for the full size quilt (3 repeats per rectangle).





**1 Repeat**

Full size quilt (3 repeats per rectangle)



**3 Repeat**

### Appliqué Sewing Directions:

1. Mark the finished seam lines on the right side of the rectangles using a removable marking tool or basting thread.

Note: Rectangle finished sizes:

Full size quilt: 5" x 67½".

2. Using your favorite technique cut the strips at the appropriate widths for the following finished stem sizes: Make (9) long stems that finish @ ½" x 24 long, (18) short stems that finish @ ¼" x 2" long and (18) medium stems that finish @ x 3" long. Using the layout template, position the shorter stems in place and then place the longer stem on top. Appliqué in place.
3. Prepare the appliqué motifs. Layer and appliqué the flowers and leaves. Make (18) of each flower and leaf motif. Make (18) of each tear drop shape, for a total of (72) tear drops.
4. Using the layout template, position the flowers and leaves on the background rectangle. Appliqué the pieces in place.
5. Press the appliqué rectangles. Trim the width only of the rectangles to their cut size of 5½". The length will be trimmed in part 5 after the block rows are finished.

### Combining the Blocks, Setting Triangles and Appliqué Sashing Strips for the Quilt

Setting Triangles for Full Size Quilt 72½" x 85"

You may wish to arrange your blocks differently than the arrangements used in the finished patterns for the quilt. Arrange the blocks and triangles on a design wall until you are happy with the layout, then proceed to the sewing directions.

RST= Right sides Together WST= Wrong sides together

**Note:** Sew all seams using a ¼" seam allowance unless noted otherwise. Press all seams flat before pressing them open or to one side.

### MAKING THE ROWS

The full size quilt - finished size: 72½" x 85"

The finished image of the full size quilt has two block row layouts. There are two sets of each row layout. (Rows 3 & 4 are rotated end to end in the final quilt layout.)



**Rows 1 & 3**

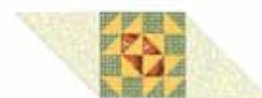


**Rows 2 & 4**

The rows for the full size quilt project will be constructed from the units shown below. There will be two end block units and four middle block units per row.



**End Block Unit**



**Middle Block Unit**

### End Block Units for the Full Size Quilt

1. Sew a small Cream Tonal triangle to one side of an end block as shown below. With the raw edges even, fold the block in half RST and fold the triangle in half WST; crease the fold with your fingers. Use the creases to center the pieces. Press the seam toward the Cream Tonal triangle. Trim the "dog ears."



**Figure 43**

2. Sew another small Cream Tonal triangle to the side adjacent to the triangle previously sewn to the block as shown below. With the raw edges even, fold the block in half RST and fold the triangle in half WST; crease the fold with your fingers. Use the creases to center the pieces. Press the seams toward the triangle. Trim the “dog ears.”



Figure 44

3. Sew a large Cream Tonal triangle to the block on the side opposite to the small triangle previously sewn to the block as shown below. Press the seam toward the Cream Tonal triangle. Trim the “dog ears.”



Figure 45

Repeat steps 1 - 3 to make end block units for all four rows; 8 end units. Two of each of those shown below if you are following the pattern design.



Rows 1 & 3

Rows 2 & 4

Figure 46

### Middle Block Units for the Full Size Quilt

4. Sew a large Cream Tonal triangle to opposite sides of a middle block as shown below. Press the seams toward the Cream Tonal triangle. Trim the “dog ears.”



Figure 47

Repeat the step above to make middle block units for all four rows; 16 middle block units. Two of each of those shown below if you are following the pattern’s block layout.



Rows 1 & 3

Rows 2 & 4

Figure 48

### Forming the Rows for the Full Size Quilt

5. Sew two end block units and four middle block units together as shown below to form a row. Press the seams to one side or open. Repeat to make one more row. These will be rows 1 & 3. Trim block rows to measure  $11\frac{3}{4}$ " x 68". There should be a  $\frac{1}{4}$ " seam allowance past the corner points of the blocks.



Figure 49

6. Sew two end block units and four middle block units together as shown below to form a row. Press the seams to one side or open. Repeat to make one more row. These will be rows 2 & 4. Trim block rows to measure  $11\frac{3}{4}$ " x 68". There should be a  $\frac{1}{4}$ " seam allowance past the corner points of the blocks.



Figure 50



## Making The Quilt Center:

### Joining the block rows and appliqué strips

#### Sewing Directions:

1. Measure your block strips and trim the appliqué strips to match the length of the block strips.
2. Join each appliquéd strip to the block strip next to it. Press the seams toward the appliquéd strips. You will have one block strip left over.
3. Sew the final block strip and all the appliquéd/blocks strips together. Press the seams toward the appliquéd strips.

Full size quilt center should measure 60½" w x 68" l.



Figure 51

### Border and Binding Instructions:

Measure the quilt top parallel to the side you will be adding a border to. Measure through the center of the quilt before cutting border strips to size for each border. Sizes for each border are given for each step, but your measurement may vary due to individual sewing style.

Press all seams flat and then toward the border strip that was just joined to the quilt top.

### Adding The Borders:

**Sewing Directions - Full Size Quilt - Finished size approx. 77" x 85"**

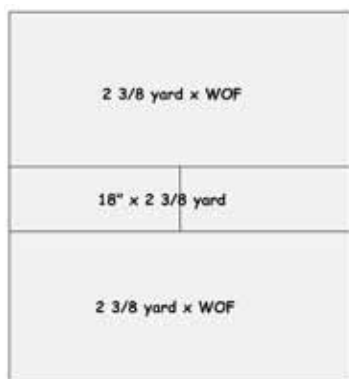
1. Join the Red Tonal, 2" x WOF, strips using diagonal seams; from this strip sub cut 2 strips @ 2" x 68", sew these to the sides of the quilt top center.
2. From the remaining Red Tonal strip, sub cut (2) strips @ 2" x 63½" and sew these to the top and bottom of the quilt top center.
3. From two Large Print 7½" wide strips, sub cut (2) strips @ 7½" x 71", sew these to the sides of the quilt top center.
4. From the remaining Large Print 7½" wide strips, sub cut 2 strips @ 7½" x 77½" and sew these to the top and bottom of the quilt top center.



Figure 52

### Piecing The Backing:

1. For the full size quilt backing, cut from the 6 yards of backing fabric; 2 lengths of fabric, @ 2 yards x WOF, each. Trim the selvages evenly off both pieces .
2. With the remaining length of fabric, divide the piece lengthwise, along the fold.
3. Prepare these two pieces for joining by squaring up the rectangles. Join the short ends of the two rectangles together to make one long rectangle and trim the piece to 18 x 2 yards.
4. Sew the long pieced 18 x 2 yard rectangle in between the two 2 yard backing pieces. Sew them together along the long edges. Use a ½" seam allowance and press to one side.



**Figure 53**

### **Finishing:**

1. Layer quilt top, batting and backing. Quilt as desired.
2. Join the 2½" Orange Tonal strips using diagonal seams.  
Use this strip to bind the quilt.

### **Congratulations!**

*While all possible care has been taken to ensure the accuracy of this pattern, we are not responsible for printing errors or the way in which individual work varies.*



Pattern for 22.5" x 5" Block, print.



