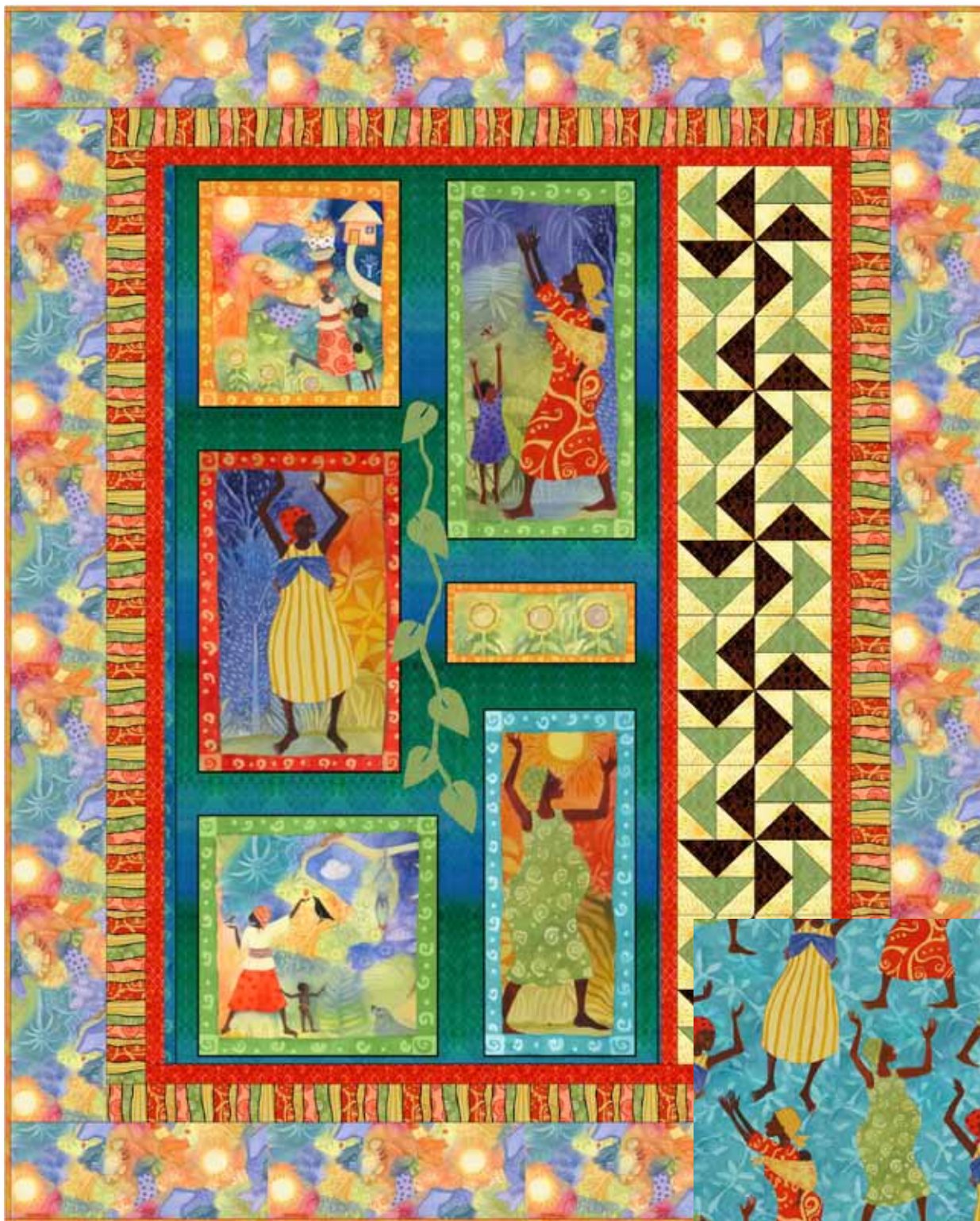


# Dance Of Life



Backing

Designed By: Janice Averill  
Finished Quilt Size: 48½" x 61½"  
Finished Block Size: 9" x 9"



22338 S



22339 OS



22340 H



22340 JA



22340 R



22338 O  
(Binding)



22336 BS



22335 Q



22337 B  
(Backing)

FABRIC REQUIREMENTS	
Design:	Yards
22338 S	5/8
22339 OS	7/8
22340 H	7/8
22340 JA	3/8
22340 R	7/8
22338 O (Binding)	3/4
22336 BS	1 3/8
22335 Q	1 PANEL
22337 B (Backing)	3 3/8

LOF = Length of Fabric    WOF = Width of Fabric

## Cutting Instructions:

### 22338 S: Yellow Suns

- Cut 4 strips @ 3 1/8" x WOF; sub cut 40pcs @ 3 1/8" x 3 1/8", divide each square once diagonally, 80 triangles

### 22339 OS: Orange Stripe

- Cut 5 strips @ 2 1/2" x WOF; from two strips cut 2 @ 2 1/2" x 38 1/2". Join the three remaining strips using diagonal seams; sub cut 2 strips @ 2 1/2" x 47 1/2".

### 22340 H: Green Tonal

- Cut 1 strip @ 5 3/4" x WOF; sub cut 5pcs @ 5 3/4" x 5 3/4", divide each square twice diagonally, 20 triangles

*Use the remaining fabric for the Appliqués* – cut 1 bias strip @ 1 1/2" wide for the stem. Cut 3 large leaves & 3 small leaves from the templates using your favorite appliqué method.

### 22340 JA: Brown Tonal

- Cut 1 strip @ 5 3/4" x WOF; sub cut 5pcs @ 5 3/4" x 5 3/4", divide each square twice diagonally, 20 triangles

### 22340 R: Red Tonal

- Cut 6 strips @ 1 1/2" x WOF; sub cut 2 @ 1 1/2" x 34 1/2". Join the remaining 4 strips using diagonal seams; sub cut 3 strips @ 1 1/2" x 45 1/2"
- Cut 2 strips @ 4" x WOF; sub cut 2 strips @ 4" x 22 1/2"

### 22338 O: Orange Suns

- Cut 6 strips @ 2 1/2" x WOF Binding

### 22336 BS: Multi Print

- Cut 7 strips @ 5 1/2" x LOF; Join three strips using diagonal seams; sub cut 2 strips @ 5 1/2" x 48 1/2". Join the three remaining strips using diagonal seams; sub cut 2 strips @ 5 1/2" x 51 1/2"

### 22335 Q: Panel

- Cut panel 22 1/2" wide and the top and bottom parallel to the rectangular motifs

### 22337 B: Ladies on Blue

- Cut 2 lengths @ 58 1/2" x LOF Backing



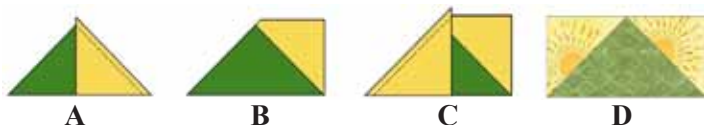
## Sewing Instructions:

Use a 1/4" seam allowance unless noted otherwise

### Pieced Blocks:

**Block Size: 9" x 9" Finished**

1. Sew the long side of a Yellow Suns triangle to the right side of a Green Tonal triangle, Diagram A. Press the seam towards the Yellow Suns triangle and trim the "dog ear" off, Diagram B. Sew another Yellow Suns triangle to the left side of the Green tonal triangle, Diagram C. Press the seam towards the Yellow Suns triangle and trim the "dog ear" off, Diagram D. Repeat to make 20 Flying Geese units.



2. Sew the long side of a Yellow Suns triangle to the right side of a Brown Tonal triangle, Diagram A. Press the seam towards the Yellow Suns triangle and trim the "dog ear" off, Diagram B. Sew another Yellow Suns triangle to the left side of the Brown tonal triangle, Diagram C. Press the seam towards the Yellow Suns triangle and trim the "dog ear" off, Diagram D. Repeat to make 20 Flying Geese units.



3. Sew a Green/Yellow Suns Flying goose unit to a Brown/Yellow Suns Flying Goose unit as shown below. Press the seam open. Repeat to make 20 double Flying Geese units.



4. Sew a pair of the Double Geese units together as shown below. Press the seam open. Repeat to make 10 paired units.



5. Sew the paired units together as shown below. Press the seam open. Repeat to make 5 blocks.

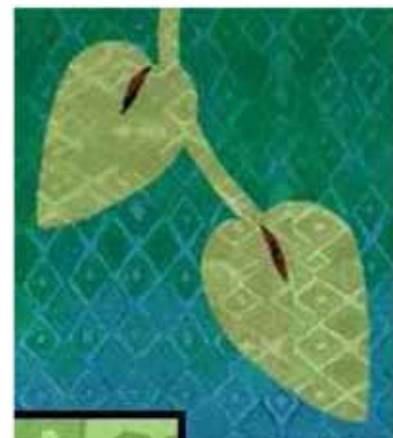


6. Sew the blocks together to form a row as shown below. Press the seams open and set the block row aside.



### Appliqués:

7. Prepare the appliqué stem and leaves using your favorite method. Sew the pieces to the panel as shown below. Use embroidery thread or fabric markers to make the centers of the leaves.



8. Sew the **Red Tonal** 4" x 22 1/2" strips to the top and bottom of the panel. Press the seams towards the panel. Trim the top and bottom strips so that the finished size of the unit is 45 1/2" from top to bottom with the panel centered.

9. Sew a **Red Tonal** 1 1/2" x 45 1/2" strip to each side of the panel unit. Press the seams towards the Red Tonal strips.

10. Sew the block row to the right side of the panel unit as shown below. Press the seam towards the Red Tonal strip.



11. Sew a **Red Tonal** 1 ½" x 45 ½" strip to the right side of the block row. Press the seams towards the Red Tonal strip.

12. Sew a **Red Tonal** 1 ½" x 34 ½" strip to the top and bottom of the panel unit. Press the seams towards the Red Tonal strips.

13. Sew an **Orange Stripe** 2 ½" x 47 ½" strip to each side of the panel unit. Press the seams towards the Orange Stripe strips.

14. Sew an **Orange Stripe** 2 ½" x 38 ½" strip to the top and the bottom of the panel unit. Press the seams towards the Orange Stripe strips.

15. Sew a **Multi Print** 5 ½" x 51 ½" strip to each side of the panel unit. Press the seams towards the Multi Print strips.

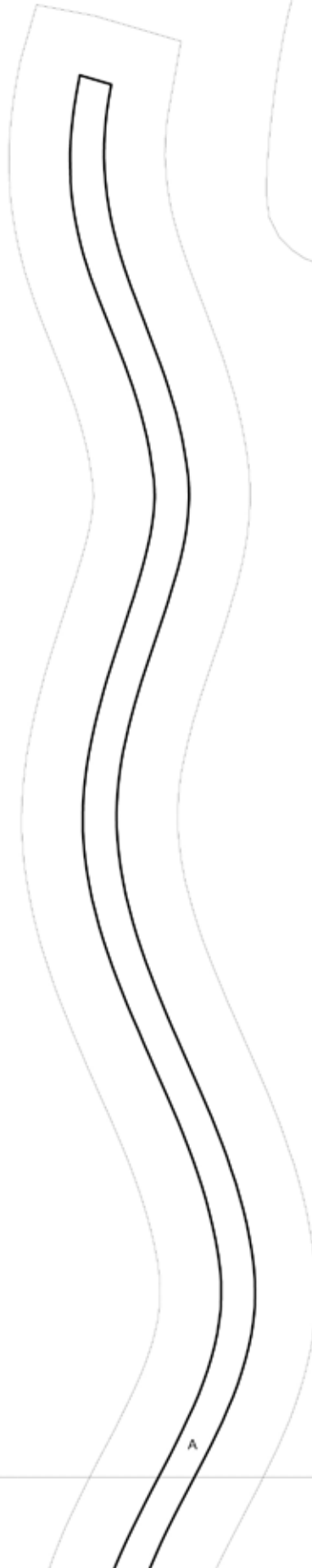
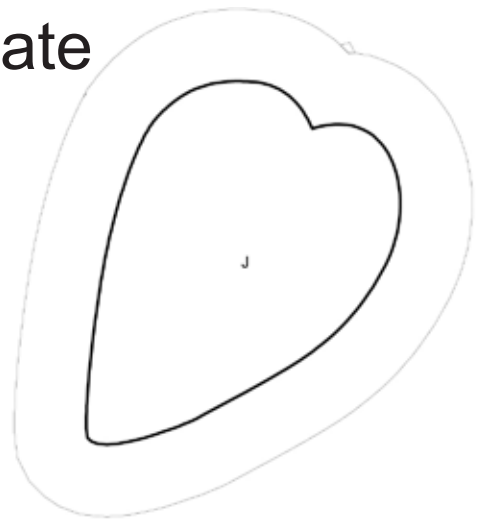
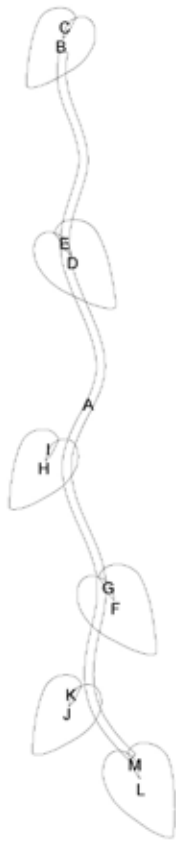
16. Sew a **Multi Print** 5 ½" x 48 ½" strip to the top and the bottom of the panel unit. Press the seams towards the Multi Print strips.

**Layer, quilt as desired and bind with the Orange Suns strip.**

*While all possible care has been taken to ensure the accuracy of this pattern, we are not responsible for printing errors or the way in which individual work varies.*

# Dance of Life Leaf Vine Template

Key Block  
(11/50 actual size)



# Dance of Life Leaf Vine Template

