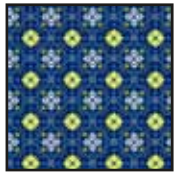
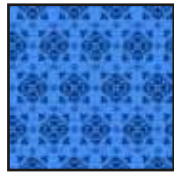


Designed by: Wendy Sheppard  
Finished Size: 87½" x 87½"



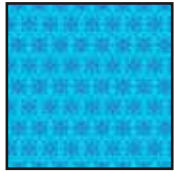
22477 N



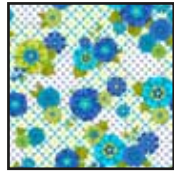
22479 B



22481 H



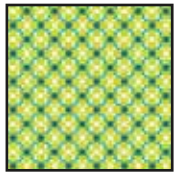
22479 Q



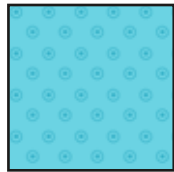
22476 ZB



22481 Z



22478 H



22481 Q



22480 QN

FABRIC REQUIREMENTS	
Design	Yards
22477 N	1¼
22479 B	¾
22481 H	2¾
22479 Q	½
22476 ZB	2
22481 Z	3
22478 H	¾
22481 Q	1
22480 QN	¾
22478 H (Binding)	¾
22479 B (Backing)	8

© 2012 Simon + Kabuki 2012

## Cutting Directions

**WOF** = Width of fabric from selvedge to selvedge.

Label all pieces with letters assigned in cutting list. The letters are used throughout the instructions to identify the pieces.

Prepare appliqué pieces for your preferred method.

### 22476 ZB - Floral Geometric

- Cut (8) 5 ½" x **WOF** strips for outer border.
- Prepare 76 leaves for appliqué. (Use leaf template or cut your own leaf shape.)

### 22477 Q - Turquoise Medallions

- Prepare 24 leaves for appliqué.

### 22477 N - Navy Medallions

- Cut (3) 1 ½" x **WOF** strips for D.
- Cut (4) 3 ½" x **WOF** strips; recut into (8) 3 ½" x 15 ⅞" R rectangles.
- Cut (1) 5 ½" x **WOF** strip; recut into (2) 5 ½" V squares, then cut the squares twice diagonally to make 8 V triangles.
- Prepare 32 flowers for appliqué. (Use flower template or cut your own flower shape.)

### 22478 H - Lime Scrollwork

- Cut (3) 3 ½" x **WOF** strips; recut into (8) 3 ½" x 12 ⅞" S rectangles.
- Cut (8) 1 ¼" x **WOF** strips for third border.
- Cut (9) 2 ¼" x **WOF** strips for binding.

### 22479 Q - Dark Turquoise Tile

- Cut (1) 3 ¼" x **WOF** strip; recut into (2) 3 ¼" P squares and (13) 1 ⅞" O squares, then cut the P squares twice diagonally to make 8 P triangles.

### 22479 B - Medium Blue Tile

- Cut (5) 1 ½" x **WOF** strips; recut into (32) 1 ½" x 5 ⅞" F rectangles.
- Cut (2) 3 ½" x **WOF** strips; recut into (8) 3 ½" x 9 ⅞" T rectangles.
- Prepare 52 leaves for appliqué.

### 22480 QN - Diagonal Stripe

- Cut (8) 1 ¾" x **WOF** strips for second border.

### 22481 H - Lime Dot Blender

- Cut (6) 1 ½" x **WOF** strips for E.
- Cut (4) 15 ½" x **WOF** strips; recut into (8) 15 ½" M squares, (16) 2 ½" K squares, and (4) 1 ½" A squares.
- Cut (1) 22 ½" x **WOF** strip; recut into (1) 22 ½" N square, then cut the square twice diagonally to make 4 N triangles.

## 22481 Q - Light Turquoise Dot Blender

- Cut (5) 1 ½" x **WOF** strips; recut into (8) 1 ½" B squares, (8) 1 ½" x 3 ½" C rectangles, and (32) 1 ½" x 3 ⅞" G rectangles.
- Cut (1) 4 ⅞" x **WOF** strip; recut into (8) 4 ⅞" J squares, then cut the squares twice diagonally to make 32 J triangles.
- Cut (2) 3 ½" x **WOF** strips; recut into (8) 3 ½" x 6 ⅞" U rectangles.

## 22481 Z - White Dot Blender

- Cut (2) 1 ½" x **WOF** strips; recut into (32) 1 ½" H squares.
- Cut (2) 5 ¼" x **WOF** strips; recut into (8) 5 ¼" L squares and (8) 4 ⅞" I squares, then cut the squares twice diagonally to make 32 L triangles and 32 I triangles.
- Cut (18) 1 ⅞" x **WOF** strips; recut into (32) 1 ⅞" x 15 ½" Q strips and (4) 1 ⅞" x 17" W strips.
- Cut (15) 1 ½" x **WOF** strips for first and fourth borders.
- Cut (8) 2" x 25" and (4) 2" x 15" bias strips for appliqué.
- Prepare 32 flower centers for appliqué. (See Appliquéd Blocks and Triangles Note on page 4.)

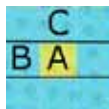
## 22479 B - Backing Fabric

- Cut (3) 96" x **WOF** lengths.

## Pieced Blocks

*Note: Use a ¼" seam allowance throughout.*

1. Stitch an A square between (2) B squares. Press seams toward the B squares. Add a C rectangle to opposite long sides of the pieced strip to complete (1) block center. Press seams toward the C rectangles. Repeat to make (4) block centers total.



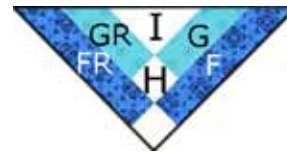
2. Sew a D strip between (2) E strips to make a strip set. Press seams toward the D strip. Repeat to make (3) strip sets total. Crosscut the strip sets into (16) 6 ½" D/E strip units.



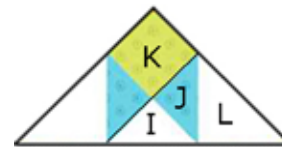
3. Apply a heavy coat of spray starch to each F and G rectangle. Trim one end of the rectangles at a 45-degree angle to make (16) each F, FR (reversed F), G, and GR pieces. Note: The spray starch will help prevent stretching of the bias edge after trimming.



4. Stitch a G piece to short edge of an I triangle. Press seam toward the G piece. Sew an H square to the square end of a GR piece. Press seam toward the GR piece. Stitch the pieced strip to the remaining short side of the I triangle. Press seam toward the pieced strip. Repeat with F and FR pieces and a second H square to complete (1) strip triangle.



5. Sew a J triangle to a short edge of (1) L triangle and to the opposite short edge of a second L triangle to make a reversed unit. Press seams toward the J triangles. Stitch the J/L unit to one short edge of an I triangle. Press seam toward the J/L unit. Sew a K square to the J end of the reversed J/L unit. Press seam toward the J/L unit. Stitch the pieced strip to the remaining short edge of the I triangle to complete (1) pieced triangle.

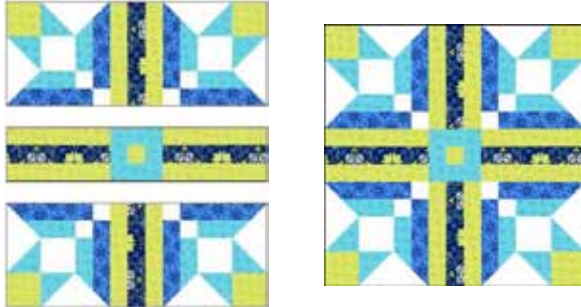


6. Stitch the strip triangle to the pieced triangle to complete a block corner. Press seam toward the strip triangle.



7. Repeat steps 4–6 to complete 16 block corners.
8. Sew a D/E strip unit to opposite sides of each block center to make 4 center rows. Press seams toward the D/E strip units.
9. Stitch a block corner to opposite long sides of the remaining D/E strip units to make 8 top/bottom rows. Press seams toward the D/E strip units.

10. Sew a center row between a top and bottom row to complete a 15 1/2" x 15 1/2" pieced block. Press seams toward the center row. Repeat to make 4 blocks total.

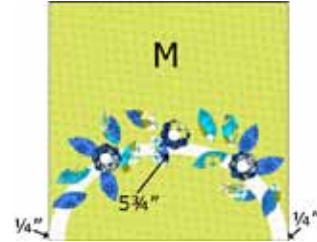


## Appliquéd Blocks and Triangles

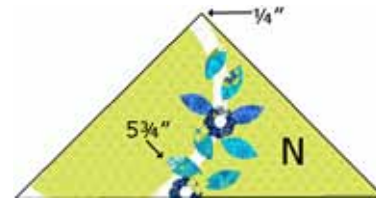
*Note: If using fusible appliqué, apply white lightweight fusible interfacing to the wrong side of the white dot blender before cutting flower centers to prevent shadowing of the navy print flowers.*

1. Fold a white dot blender bias strip in half along the length with wrong sides together. Stitch along the long raw edges with a 1/4" seam allowance to make a tube. Press flat with the seam centered on the back side. Repeat with each bias strip.
2. Fold the M squares in half and crease to mark the centerline. Measure 5 3/4" from one edge of each square along the centerline and mark with a pin.
3. Arrange a 25" bias strip on an M square, aligning the ends of the strip with the edge of the square, placing the outer edges of the strip 1/4" from the edges of square, and curving the strip to intersect the 5 3/4" pin and form an arc. Pin in place. Appliqué along the edges of the bias strip. Repeat with the remaining M squares.
4. Repeat step 2 with the N triangles, folding in half on one short edge. Arrange a 15" bias strip on each triangle, aligning one end of the strips 1/4" from the square corner of the triangles and curving the strips to intersect the 5 3/4" pins. Pin in place. Appliqué along the edges of the bias strips. Trim any excess length even with the long edge of the triangles.

5. Arrange 15 assorted leaves along the bias strip on each M square. Appliqué in place. Arrange and appliqué (3) flowers and flower centers on each square to complete (8) 15 1/2" x 15 1/2" appliquéd blocks. Press.



6. Arrange (8) assorted leaves along the bias strip of each N triangle. Appliqué in place. Arrange and appliqué (2) flowers and flower centers on each triangle to complete (4) appliquéd setting triangles. Press. Note: Trim (1) flower on each triangle even with the long edge of the triangle, if desired, or place the whole flower away from the long edge.



## Corner Triangles:

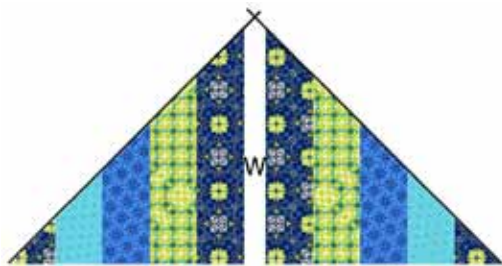
1. Apply a heavy coat of spray starch to the R, S, T, and U rectangles. Press dry. Trim one end of each rectangle at a 45-degree angle to make (4) each R, RR, S, SR, T, TR, U, and UR pieces.



2. Join R, S, T, and U pieces and add a V triangle to the U end to complete 1 corner unit. Press seams in one direction. Repeat to make (4) corner units total. Repeat with RR, SR, TR, and UR pieces and V triangles to make (4) reversed corner units.



3. Join a corner unit and a reversed corner unit with a W strip, aligning one end of the strip with the square corners of the corner units. Press seams toward the corner units. Trim the end of the W strip even with the edges of the corner units to complete (1) corner triangle. Repeat to make (4) corner triangles total.



## Quilt Assembly

*Note: Refer to the quilt drawing for the following steps.*

1. Join (2) appliquéd blocks and (2) appliquéd triangles with (3) Q strips to make an appliquéd row. Press seams toward the Q strips. Repeat to make a second appliquéd row.
2. Join (2) appliquéd blocks and (2) pieced blocks with (5) Q strips to make a pieced row. Press seams toward the Q strips. Repeat to make a second pieced row.
3. Sew an O square between (2) Q strips. Press seams toward the Q strips. Add a P triangle to each end to complete a short sashing row. Repeat to make a second short sashing row.
4. Sew (4) Q strips alternately together with (3) O squares. Press seams toward the Q strips. Add a P triangle to each end to make a long sashing row. Repeat to make a second long sashing row.

5. Sew (4) Q strips alternately together with (5) O squares to make the center sashing row. Press seams toward the Q strips.

6. Join the appliquéd and pieced rows with the long, short and center sashing rows. Press seams toward the sashing rows. Add a corner triangle to (4) Q strip edges of the pieced section to complete the 70" x 70" quilt center. Press seams toward the corner triangles.

7. Sew the 1 ½" x **WOF** white dot blender strips short ends together to make a long strip. Press seams to one side. Cut into (2) 70", (2) 72", (2) 76", and (2) 78" strips. Sew the 70" strips to opposite sides and the 72" strips the remaining sides of the quilt center. Press seams toward the strips. Set aside the remaining strips for the fourth border.

8. Repeat step 7 with the 1 ¾" x **WOF** diagonal stripe strips and cut (2) 72" and (2) 74 ½" strips. Sew the shorter strips to opposite sides and the longer strips to the remaining sides of the quilt center. Press seams toward the strips.

9. Repeat step 7 with the 1 ¼" x **WOF** lime scrollwork strips and cut (2) 74 ½" and (2) 76" strips. Sew the shorter strips to opposite sides and the longer strips to the remaining sides of the quilt center. Press seams toward the strips.

10. Sew the 76" white dot blender strips to opposite sides and the 78" strips to the remaining sides of the quilt center. Press seams toward the strips.

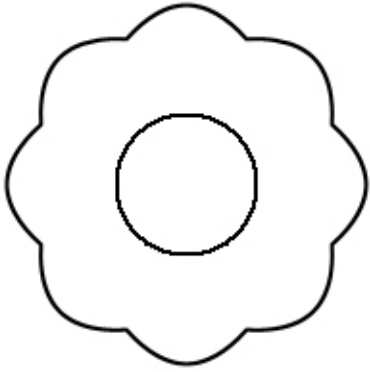
11. Repeat step 7 with the 5 ½" x **WOF** floral geometric strips and cut (2) 78" and (2) 88" strips. Sew the shorter strips to opposite sides and the longer strips to the remaining sides to complete the quilt top. Press seams toward the strip.

12. Remove the selvedge edges from the backing pieces. Join the pieces on the long edges with a ½" seam allowance. Press seams open. Trim the sides to make a 96" x 96" backing piece.

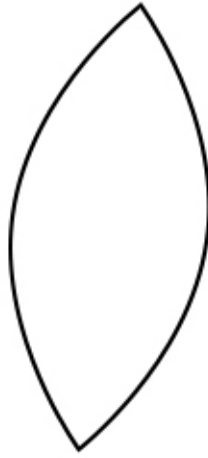
13. Layer, quilt, and bind, using your favorite methods and the lime scrollwork binding strips, to complete the quilt.

*While all possible care has been taken to ensure the accuracy of this pattern, we are not responsible for printing errors or the way in which individual work varies.*

# Appliqué Template



Flower Template



Leaf Template