



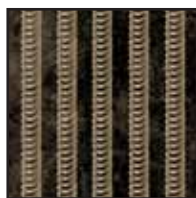
Designed By: Lisa Pompa
Finished Quilt Size: 44" x 58"



22340 A



22432 J



22435 J



22433 B



22433 H



22434 S



22431 B

FABRIC REQUIREMENTS	
Design	Yards
22340 A	1 Panel
22432 J (inc. binding)	2
22435 J	$\frac{3}{8}$
22433 B	$\frac{1}{4}$
22433 H	$\frac{1}{4}$
22434 S	$\frac{1}{3}$
22431 B (backing)	$\frac{3}{8}$

Cutting Directions

Note: WOF = width of fabric

Use a $\frac{1}{4}$ " seam allowance unless otherwise noted.

22340 A: Victorian Dream Panel

- Cut (2) large squares $\frac{1}{4}$ " beyond the black-and-white check border all around to make (2) $13\frac{1}{2}$ " x $13\frac{1}{2}$ " squares.
- Cut (3) circle shapes $\frac{1}{4}$ " beyond the black-and-white check border all around.
- Cut (3) smaller squares $\frac{1}{4}$ " beyond the black-and-white check border all around.

22432 J: Black Floral

- Cut (2) $3\frac{1}{2}$ " x WOF inner border strips. Trim strips to $3\frac{1}{2}$ " x 30" for top/bottom border strips.
- Cut (3) $3\frac{1}{2}$ " x WOF inner side border strips.
- Cut (6) $5\frac{1}{2}$ " x WOF outer border strips.
- Cut (6) $2\frac{1}{4}$ " x WOF binding strips.

22435 J: Black Stripe

- Cut (2) $1\frac{1}{2}$ " x WOF strips for strip set.
- Cut (3) $1\frac{1}{2}$ " x WOF strips for inner borders. Recut 1 strip into (2) $1\frac{1}{2}$ " x 20" strips. Trim each of the remaining strips to $1\frac{1}{2}$ " x 34".
- Cut (1) $2\frac{1}{2}$ " x WOF strip. Recut into (16) 2 " x $2\frac{1}{2}$ " rectangles.

22433 B: Blue Gears Print

- Cut (4) 1" x WOF strips. Recut strips into (4) 1" x $13\frac{1}{2}$ " strips and (4) 1" x $14\frac{1}{2}$ " strips.
- Cut (4) $1\frac{1}{2}$ " x WOF strips for borders. Trim strips to make (4) $1\frac{1}{2}$ " x 30" top/bottom strips.
- Cut (10) $1\frac{1}{2}$ " x WOF strips for border strips.
- Cut (3) $2\frac{1}{2}$ " x WOF strips. Recut into (32) 2 " x $2\frac{1}{2}$ " rectangles and (4) $2\frac{1}{2}$ " squares.

22433 H: Green Gears Print

- Cut (2) $2\frac{1}{2}$ " x WOF strips. Recut into (24) 2 " x $2\frac{1}{2}$ " rectangles.

22434 S: Gold Blender

- Cut (2) $1\frac{1}{2}$ " x WOF strips for strip set.
- Cut (2) $2\frac{1}{2}$ " x WOF strips. Recut into (22) 2 " x $2\frac{1}{2}$ " rectangles.

22431 B: Blue Animal Print

- Cut (2) 66" x WOF strips for backing.

Sewing Instructions

1. Start with the two $13\frac{1}{2}$ " x $13\frac{1}{2}$ " panel squares. Sew the 1" x $13\frac{1}{2}$ " Blue Gears strips to opposite sides and the 1" x $14\frac{1}{2}$ " Blue Gears strips to the top and bottom of each square. Press seams toward strips.
2. Join the top of one framed panel to the bottom of the other; press seam to one side.

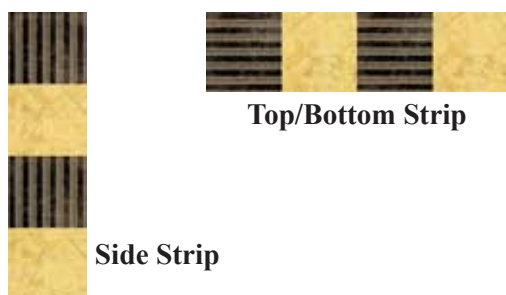


3. Join (2) $1\frac{1}{2}$ " x **WOF** strips Black Stripe with the (2) $1\frac{1}{2}$ " x **WOF** strips Gold Blender to make a strip set (Diagram 1). Press seams in one direction. Cut the strip set into (22) $1\frac{1}{2}$ " segments.



Diagram 1

4. Join (7) black stripe/gold segments to make a side strip; press seams in one direction (Diagram 2). Repeat to make a second side strip. Join (4) segments to make a top strip; repeat to make a bottom strip. Sew the side strips to opposite long sides and the top and bottom strips to the top and bottom of the pieced center. Press seams away from the pieced strips.



Top/Bottom Strip

Side Strip

5. Center and sew the $1\frac{1}{2}$ " x 34" strips of the Black Stripe to opposite sides of the pieced center, and the $1\frac{1}{2}$ " x 20" strips of Black Stripe to the top and bottom, beginning and ending stitching $\frac{1}{4}$ " from each corner.
6. Fold the quilt top in half diagonally with wrong sides together. Place the ends of two borders right sides together and pin to hold. Align the 45-degree angle line of a rotary-cutting ruler on the border seam line. Mark a line from the end of the stitching line to the outer edge of the layered border strip ends. Stitch on the marked line. Trim $\frac{1}{4}$ " beyond the stitched line (Diagram 2). Unfold the quilt top. Press the mitered corner seam open. Repeat to miter each corner. Press strip seams toward the Black Stripe strips.
7. Join the (10) $1\frac{1}{2}$ " x **WOF** Blue Gears print strips on the short ends to make a long strip. Recut the strip into (4) $1\frac{1}{2}$ " x 44" strips and (2) each $1\frac{1}{2}$ " x 46" and $1\frac{1}{2}$ " x 60" strips.
8. Join the $3\frac{1}{2}$ " x **WOF** Black Floral strips on the short ends to make a long strip. Recut the strip into (2) $3\frac{1}{2}$ " x 44" strips.
9. Sew a $3\frac{1}{2}$ " x 44" Black Floral strip between (2) $1\frac{1}{2}$ " x 44" Blue Gears print strips to make a side border strip. Press seams toward the black floral strip. Repeat to make a second side border strip.
10. Sew a $3\frac{1}{2}$ " x 30" Black Floral strip between (2) $1\frac{1}{2}$ " x 30" Blue Gears print strips to make the top border strip. Press seams toward the black floral strip. Repeat to make the bottom border strip.
11. Center and sew the border strips made in steps 9 and 10 to the sides and top and bottom of the pieced center, mitering corners as in steps 5 and 6.
12. Join (28) 2" x $2\frac{1}{2}$ " rectangles on the $2\frac{1}{2}$ " sides to make a side strip referring to Diagram 3 and the quilt drawing for placement of colors. Press seams in one direction. Repeat to make a second side strip. Sew a strip to opposite long sides of the pieced center. Press seams toward the Blue Gears print strips.

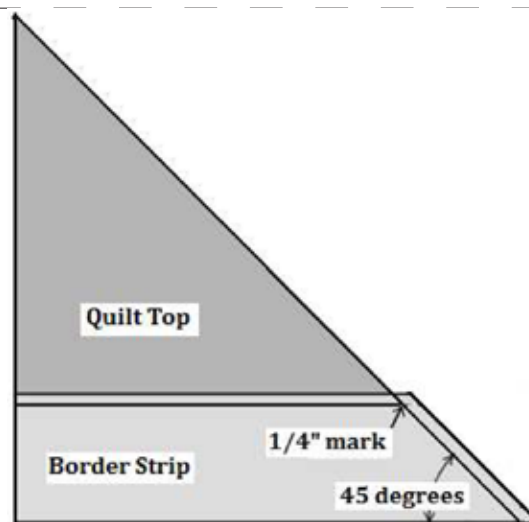


Diagram 2



Diagram 3

13. Join (19) 2" x 2½" rectangles on the 2½" sides to make the top strip referring to Diagram 4 and the quilt drawing for placement of colors. Trim ¼" off each end of the strip to make a 2½" x 28½" top strip. Press seams in one direction. Repeat to make the bottom strip.



Diagram 4

14. Sew a 2½" Blue Gears print square to each end of each strip made in step 13 (Diagram 5). Press seams away from the squares. Sew these strips to the top and bottom of the pieced center. Press seams toward the Blue Gears print strips.



Diagram 5

15. Join the 5½" x WOF Black Floral strips on the short ends to make a long strip; press. Recut strip into (2) 5½" x 60" strips and (2) 5½" x 46" strips.
16. Sew a 1½" x 60" Blue Gears print strip to (1) 5½" x 60" Black Floral strip to make a side strip; press seam toward the Black Floral strip. Repeat to make a second side strip. Repeat with the 1½" x 46" and 5½" x 46" strips to make the top and bottom strips.
17. Center and sew the side strips to opposite long sides and top and bottom strips to the top and bottom of the pieced center, mitering corners as in steps 5 and 6. Press seams toward strips.
18. Using your favorite appliqué method, arrange and appliqué the three circle and three small square panels on the completed quilt top. Note: If using fusible appliqué methods, remove the ¼" excess around outer edges of the trimmed panels before fusing shapes in place.

19. Remove the selvedge edges from the backing pieces. Join the 2 backing pieces along the 66" edges using a ½" seam allowance. Press seam open. Trim backing to 52" x 66".
20. Join the 2¼"-wide Black Floral binding strips with diagonal seams, trim seams to ¼" and press open to make a long binding strip.
21. Layer, quilt, and bind using your favorite methods and the prepared binding strip to complete the quilt.

While all possible care has been taken to ensure the accuracy of this pattern, we are not responsible for printing errors or the way in which individual work varies.