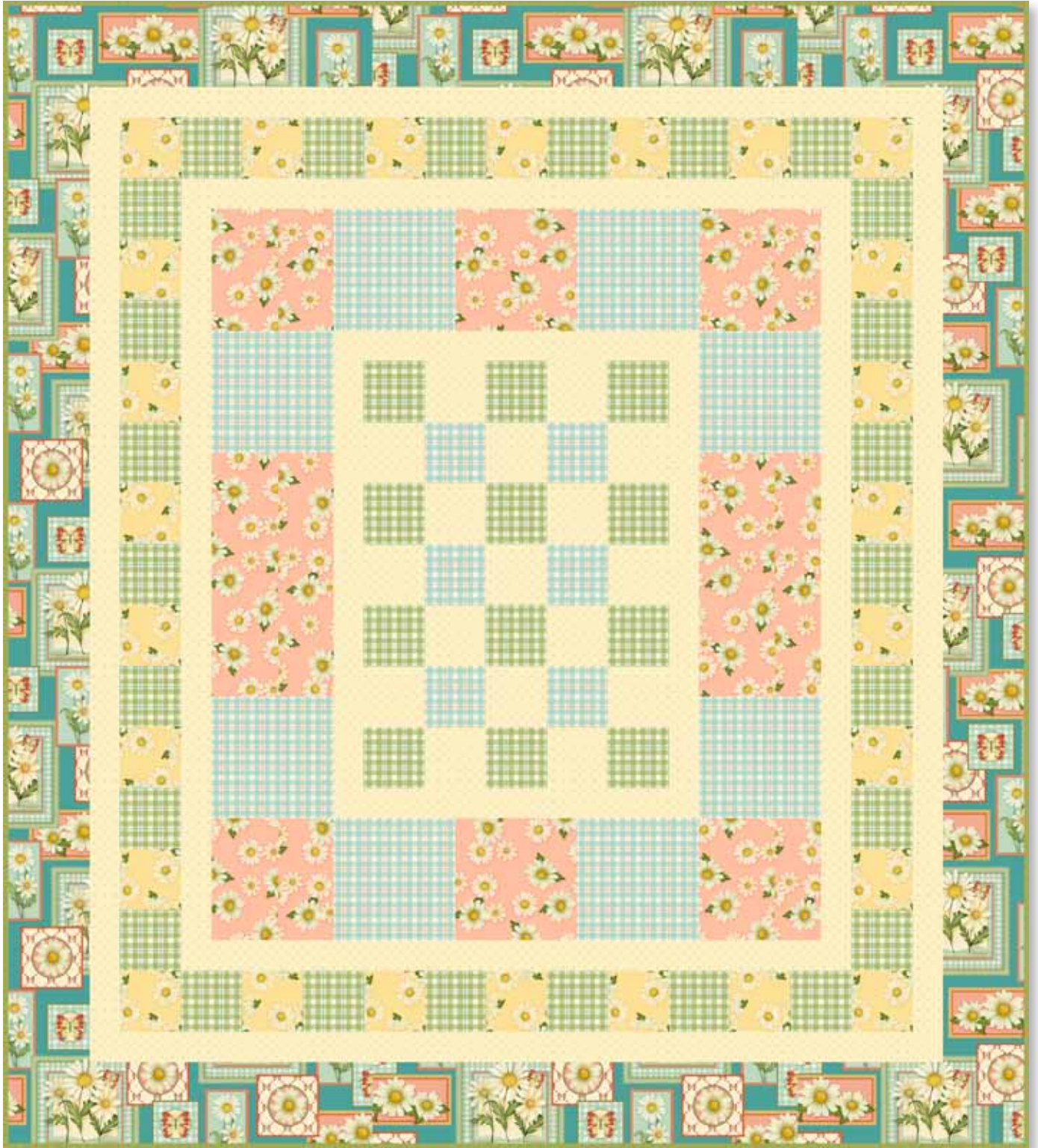




Daisy Garden Quilt

Angela Anderson



Designed By: Heidi Pridemore
Finished Quilt Size: 50" x 56"



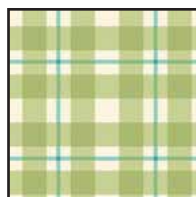
23116 Q



23121 E



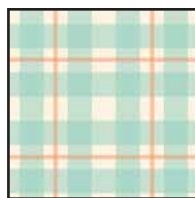
23117 S



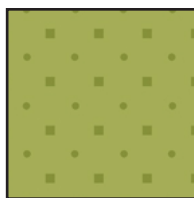
23120 H



23117 C



23120 Q



23121 H

FABRIC REQUIREMENTS	
Design:	Yards
23116 Q	1½
23121 E	1
23117 S	¾
23120 H	½
23117 C	½
23120 Q	¾
23121 H	½
Backing of choice	3½

Cutting Directions:

Please read all instructions carefully before beginning. ¼" seam allowance is included in measurements and all strips are cut across the width of the fabric (WOF) unless noted otherwise. Label pieces and keep together until ready to sew.

A. 23116 Q: Daisy Patch

- Cut two 4½" x 48½" strips from the length of fabric (LOF).
- From the remaining fabric cut four 4½" x width of fabric (WOF) strips. Sew the strips together and cut two 4½" x 50½" strips.

B. 23121 E: Cream Tonal

- Cut two 2" x WOF strips. Sub-cut the strips into two 2" x 21½" strips and two 2" x 18½" strips.
- Cut two 2" x 36½" strips.
- Cut two 2" x 33½" strips.
- Cut three 2" x WOF strips. Sew the strips together and cut two 2" x 45½" strips.
- Cut two 2" x 42½" strips.
- Cut two 3½" x WOF strips. Sub-cut the strips into seventeen 3½" squares.

C. 23117 S: Yellow Daisies

- Cut three 3½" x WOF strips. Sub-cut the strips into twenty-six 3½" squares.

D. 23120 H: Green Plaid

- Cut four 3½" x WOF strips. Sub-cut the strips into thirty-eight 3½" squares.

E. 23117 C: Peach Daisies

- Cut one 6½" x WOF strip. Sub-cut the strip into six 6½" squares.
- Cut one 6½" x WOF strip. Sub-cut the strip into two 6½" x 12½" strips.

F. 23120 Q: Blue Plaid

- Cut two 6½" x WOF strips. Sub-cut the strips into eight 6½" squares.
- Cut one 3½" x WOF strip. Sub-cut the strip into six 3½" squares.

G. 23121 H: Green Tonal

- Cut six 2½" x WOF strips for the binding.

Backing: Your Choice

- Cut two 58" x WOF strips. Sew the strips together and trim to 58" x 64" for the back.

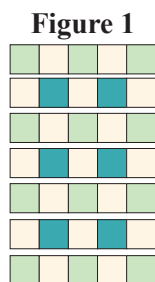
Quilt Piecing Instructions:

Press towards the darker fabric when assembling

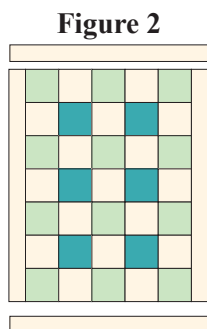
A. Block Assembly:

- To make the center block, sew three 3½" Fabric D squares and two 3½" Fabric B squares together, alternating them, to make Row One. Repeat to make Rows Three, Five and Seven.
- Sew three 3½" Fabric B squares and two 3½" Fabric F squares together, alternating them, to make Row Two. Repeat to make Rows Four and Six.

- Sew the seven rows together, in numerical order, to make the center block (Fig. 1).



- Sew 2" x 21½" Fabric B strip to each side of the center block. Sew one 2" x 18½" Fabric B strip to the top and bottom of the center block (Fig. 2).



B. Quilt Assembly:

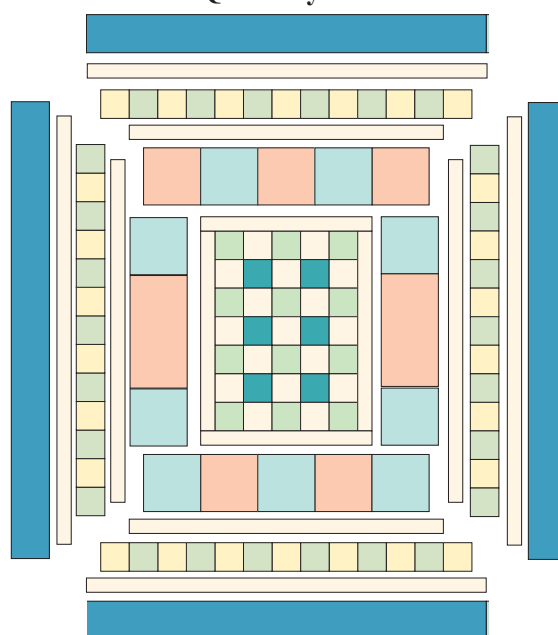
(Refer to the quilt layout while assembling)

- Sew two 6½" Fabric F squares and one 6½" x 12½" Fabric E strip together to make one side strip. Repeat to make a second side strip. Sew one strip to each side of the center block.
- Sew three 6½" Fabric E squares and two 6½" Fabric F squares together, alternating them, to make one strip. Repeat to make a second strip. Sew the strips to the top and bottom of the center block.
- Sew one 2" x 36½" Fabric B strip to each side of the center block. Sew one 2" x 33½" Fabric B strip to the top and bottom of the center block.
- Sew seven 3½" Fabric D squares and six 3½" Fabric C squares together, alternating them, to make one side strip. Repeat to make a second strip. Sew one strip to each side of the center block.

- Sew seven 3½" Fabric C squares and six 3½" Fabric D squares together, alternating them, to make one strip. Repeat to make a second strip. Sew the strips to the top and bottom of the center block.

- Sew one 2" x 45½" Fabric B strip to each side of the quilt top. Sew one 2" x 42½" Fabric B strip to the top and bottom of the quilt top.
- Sew one 4½" x 48½" Fabric A strip to each side of the quilt top. Sew one 4½" x 50½" Fabric A strip to the top and bottom of the quilt top.

Quilt Layout



C. Finishing:

- Prepare the backing to measure 58" x 64". Press the seams open.
- Layer the quilt top, batting and backing. Baste the layers together.
- Quilt as desired.
- Trim layers even with the quilt top.
- Sew the 2½" x 42" Fabric G binding strips together, end to end with 45° seams, to make the binding. Fold this long strip in half lengthwise with wrong sides together and press.
- Bind as desired.

While all possible care has been taken to ensure the accuracy of this pattern, we are not responsible for printing errors or the way in which individual work varies.